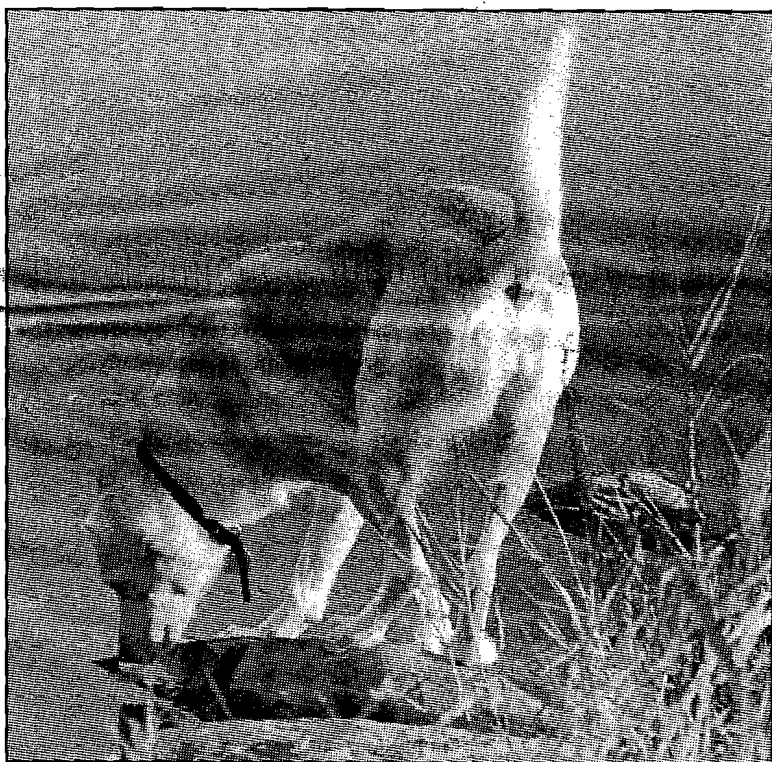


NEW EDINBURGH NEWS

December 1999

Burgh Rises against NCC Leash Law



In response to the impending NCC Domestic Animal Regulation that will require all dogs on NCC lands to be on a leash not to exceed 2 metres (approx. 6 ft), the Rockcliffe-Manor Park - New Edinburgh (RMN) Dog Park Association has been formed.

This committee represents responsible dog owners/walkers currently using NCC lands located in and around New Edinburgh, Lindenlea, Manor Park, and Rockcliffe

Park. Historically, the NCC lands in our neighbourhoods have been "dog friendly" and we would like to maintain them as such. Time is running short: dog owners/walkers who would like to see our leash-free areas remain intact are urged to join us and be heard. Please contact: Catherine MacLean (744-2017), macleanc@istar.ca or Catherine Mirsky (741-8967), cmirsky@attglobal.net.

See the article on page 4.



Remembrance of things to come! - Sketch by Martha Markowsky

NECA Heritage Notecards Still Available

The popular series of heritage notecards printed by NECA as a community fundraiser in 1998 is still available, and makes a perfect Christmas gift. Each package contains 12 cards, featuring six historic photographs of the Burgh.

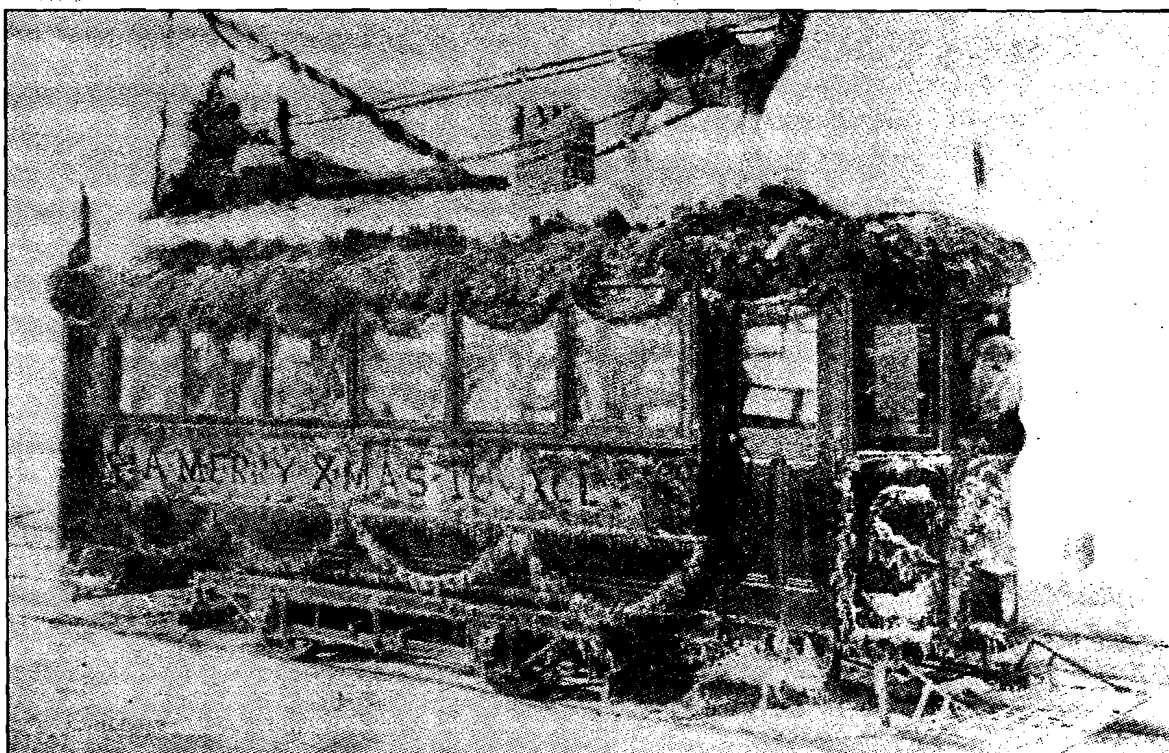
Included in the set are

William James Topley's photo of Lord Dufferin curling at Rideau Hall (1870s), the Fraser School House (ca. 1930), a Horse Street Car outside the Horse Car Division stable on Stanley Avenue (ca. 1890), the Jolicoeur brothers delivering groceries for their

father (ca. 1920), a spring flood on Crichton St. (ca. 1900), and an early view of Rideau Falls (ca. 1870).

A package of 12 costs \$10. To order, call Rick Findlay at 747-8081 or Gail McEachern at 749-8420.

Santa Claus is Coming to Town



The Ottawa Electric Street Railway was Santa's conveyance of choice in 1896 when he visited Ottawa. He and his reindeer perched on the roof of the garlanded tram car. The conductor and motorman were costumed as Icelanders. Some thousands of oranges were thrown to the children, who scrambled for them, furnishing no end of fun.

The Ottawa Electric Street Railway was established in 1891 by Thomas Ahearn and Warren Y. Soper, replacing the horse-drawn trams of the Ottawa City Passenger Railway Company. These were the first electrically heated tram cars on the continent. Thomas Ahearn designed the underfloor heaters. An article in the *Canadian Engineer* extolled them: "In no city in the

temperate zone is street railway traffic so comfortable. On the coldest day in winter the cars are as comfortable as on the balmiest day in summer, every car being heated by electricity, and kept at uniform temperature." Sunday tram service began in 1900, despite protests that it would lead to immorality. The Burgh line ran along Crichton Street, and then out along the Ottawa River.

*Don't forget the
Great Burgh
Skating Party
at the Field House
Saturday, January 29
Everyone welcome!*





NECA President Gail McEachern Reports

"Tis the season to be jolly," and we in New Edinburgh are certainly feeling jolly about the OMB's decision not to reinstate the Vanier Parkway Extension in the Region's Official Plan.

Unlike the 1990 OMB hearing, when we challenged the Region to have the proposed roadway deleted from the former Plan, this time the Region and the community were on the same side. The Region presented an impressive roster of expert witnesses, who dealt with comprehensive transportation and land-use planning issues. NECA's testimony focused on New Edinburgh Park as a special oasis, valued for its beauty and rich in what it offers residents of the Region for both active and passive recreational pursuits.

This has been a long battle, and once again, as in the past, the community rallied behind this effort to present compelling arguments to ensure the roadway would never become a reality. Besides generous financial donations, which were greatly appreciated, we were blessed with contributions of time, talent and energy made by many supporters.

In particular, Bob Burchill deserves a medal for his cheerful perseverance and patience. He sat through the whole three weeks of the hearing as NECA's representative. This commitment incidentally provided him with a fine opportunity to improve his crossword puzzle skills.

Madeleine Matthews and Heather Findlay created a wonderful four-minute video of the park. Peter Glasgow's beautiful photographs of the park were incorporated into the visual evidence section of NECA's own document book. Gary McIntyre and Fen Hampson collected data on park use by conducting a survey of 300 park visitors and made a very professional presentation at the public meeting. Diane Mayer spoke movingly at the same meeting on the use of the park by the New Edinburgh Children's Cooperative Playgroup. Charles Wesley-James testified about the use made of the park by the Region's enthusiastic Ultimate Frisbee players. Hugh Williamson, an acoustical consultant spoke about the potential negative impacts of noise from the proposed extension.

To all of you we offer congratulations and thanks for a job well done.

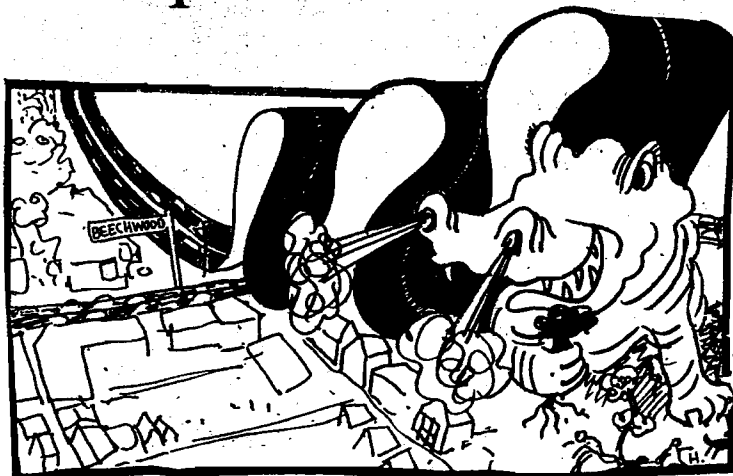
Marcia Lowe, in an article entitled "Reclaiming Cities for People," said: "Natural green space is pleasing to the eye and soothing for the spirit. Far from being a luxury, nature is vital to a humane city." "Parks not Pavement," the community's mantra for 30 years, has finally been heard.



Your NECA Representatives 1999-2000

Barbara Benoit, 749-5904	New Edinburgh News
Pierre Deschamps, 746-7699	Development, NCC
Rick Findlay, 747-8081	Traffic, NCC
Daphne Hope, 749-9250	Vice-president
Gemma Kerr, 745-3493	Development
Barbara Korwin, 749-2119	Development
Gail McEachern, 749-8420	President
Vicki Metcalfe, 747-0714	Treasurer
Thierry Montpetit, 744-2648	Field House
Tom Place, 748-0127	Chair, Development
Susan Rodocanachi, 741-6650	Secretary
Ex officio:	
Melodie Salter, 744-0672	Community Council Rep
Margaret Carver, 744-6176	Monarch Meadow
Ed Browell, 749-4349	Park Improvements

The Vanier Parkway A Report on the OMB Hearing



Gone the way of the dinosaurs!

By Bob Burchill

The Vanier Parkway will not be extended from Beechwood to the Macdonald-Cartier bridge. The exclusion of this and other proposals from the RMOC (Rural Municipality of Ottawa Carleton) 1997 ten year capital development plan, after having been included in previous plans, has been the subject of an appeal to the Ontario Municipal Board by, *inter alia*, Angie Todesco, a resident of King Edward Avenue. After hearing all the evidence concerning the proposal, the Chair of the appeal board announced on November 2 that it will not be re-included.

Miss Todesco appealed against the exclusion of three proposals from the 1997 plan, all or any of which, she contended, would have provided relief from the heavy traffic now using the KERWN (King Edward, Rideau, Waller, Nicholas) corridor and causing serious detriment to the area. Apart from the Vanier extension, her appeal concerned the Kettle Island corridor, a trans river extension of the Aviation Parkway, and the Champagne corridor, a proposal to connect the Queensway to Quebec using the railway right of way leading to the Lemieux Island bridge.

Her arguments for retention were essentially that (1) the volume of traffic, particularly heavy transport, on the KERWN corridor is both deleterious and dangerous; (2) relief has been

promised for years but never delivered; (3) Quebec authorities, especially the City of Gatineau, have been encouraged by previous RMOC attitudes to plan trans-border infrastructure to accommodate the proposals, rather than the downstream Petrie Island corridor now proposed by the RMOC and others to form part of an extensive road system ringing the National Capital region; and that (4) in view of the above, they should not be excluded until clear and unequivocal decisions have been taken to implement an alternative.

In rebuttal, the RMOC, the City of Ottawa, and local organizations from Hintonburg, Dalhousie, New Edinburgh and Manor Park led evidence defining the social and economic costs of the proposals, should they be implemented, and the benefits that would be realized by carrying out the provisions of the 1997 plan as published.

The City of Ottawa's evidence related principally to the investments the city has made in New Edinburgh Park. NECA stressed the damage a Vanier extension would cause to the area, particularly the park and river front, a facility enjoyed by people from both near and distant communities. It also expressed concern that a bridge at Kettle Island would result in greatly increased traffic on Hemlock/Beechwood.

The Chair of the appeal board reserved judgement on the Kettle Island proposal, but announced orally his decision that the Champagne corridor and the Vanier extension would not be re-introduced into the plan. While stressing that more complete rationales would be included in a future written judgement, he stated that the Champagne corridor would be best employed for implementing present plans to increase public transport use, and that the cost of the Vanier extension did not justify the benefits it might offer. In rendering his decision, the Chair employed a comment made by one of the expert witnesses who said that the Vanier Parkway extension was an idea "... whose time is long past." He gave no commitment as to the timing of a full judgement, but expressed concern that all the evidentiary material be delivered to his office as soon as possible to facilitate its early consideration.

The Chair concluded the hearing by complimenting all parties on the civility and decorum they had exhibited throughout, and was at special pains to mention the mannerly conduct of those who participated in the public commentary evening.

NECA MEETINGS: All Welcome

All members of the community are welcome at the monthly meetings and are encouraged to volunteer wherever their interests lead them. If there is an item you would like to have discussed, please call Gail McEachern, president, to have it put on the agenda.

Meetings are held at the Field House. (If one is held elsewhere for any reason, a notice will be taped to the Field House door.)

The meeting date is the
third Thursday of every
month at 7 p.m.

December 16
January 13
February 10
March 10
April 29
May 18
June 15

NEW EDINBURGH NEWS

is published five times a year

by the New Edinburgh Community Alliance

Mailing address: P.O. Box 74038, Ottawa K1M 2H9

Publication dates: Oct. 1, Dec. 1, Feb. 1, April 1, June 1

Deadlines: Sept. 10, Nov. 10, Jan. 10, March 10, May 10

Editor: Carolyn Brereton, 749-5499 (fax: 747-7947)

Advertising Manager: Dim Fleet, 742-7349

Distribution Manager: Charles Wesley-James, 746-7060

Distribution to stores: Tom Place, 748-0127

Subscriptions: Ethel Proulx, 745-4443

Business reporter: Jane Heintzman

Breezy Bits Editor: Margot Silver, 748-7975

Printed in Renfrew, Ontario by Runge Newspapers, Inc.

New Edinburgh News Gets New Editor for the New Millennium

By Barbara Benoit

The corollary, of course, is that the old editor shuffles off into the sands of history, and so I do, joining a select and illustrious club of quietly retired ex-editors.

I turned out my first issue of the paper in October 1993, after Jane Heintzman phoned to announce, "We were discussing who should be the next editor, and your name came up." From a certain perspective (that of, say, 3:45 a.m. on the morning the paper is supposed to go to the printer) it seems like a very long time ago. From other perspectives, it seems like yesterday. The gazebo had just been installed in the playground; the City had just promised \$800,000 in park improvements; the Monarch Meadow had just been laid out; and Heather Matthews had just opened a grocery store named after her dog (Chico's, later 42 Crichton). On the other side of the ledger, Trustee Cynthia Bled was warning, quite presciently, about the costs associated with school board amalgamation. One of the endearing things about New Edinburgh is that *plus ça change, plus c'est la même chose*.



Carolyn Brereton

Our new editor, Carolyn Brereton, actually volunteered for the job, with only the gentlest shove. Printer's ink runs in the family veins: her father was a newspaper editor. She lives on Maple Lane and has 8-year-old twins, who attended Crichton School until it closed and are now at Manor Park. Not only did she attend the full, brutal series of almost daily meetings over the closing of Crichton and three other schools last year, she is now, as co-chair of the Manor Park School Council, attending more board meetings about this year's round of closings. Her experience with the *New Edinburgh News* began with the special issue on school closings last February, and she has been contributing articles regularly ever since.

I have been editing the *Manor Park Chronicle* as well as the *New Edinburgh News* for the past two years, and Carolyn is taking over both papers. They work well in tandem, coming out in alternate months; and as we move toward one-tier government and continue to fight for the rational location of roads and bridges, communication links between communities with similar interests will become more and more important.

The *New Edinburgh News* is an excellent community newspaper because it is strongly supported by the community. Our columnists contribute faithfully, and are genuinely regretful about being late. Our advertisers are loyal and understanding (please shop at their shops and use their services). And our occasional writers, artists and photographers keep coming back with new ideas, stories and pictures. Many of the people who were helping with the paper when I took it on are still helping: Ethel Proulx, Jane Heintzman, Sandra Ferguson, Margot Silver, Melodie Salter, and Tom and Penney Place.

Runge Newspapers, our printer, has given excellent service for years, and their staff often go well beyond the call of duty.

Dian Pleet began by writing occasional articles and took over as advertising manager when Jane Heintzman became our business columnist. She does wonders in keeping the ads rolling in reasonably complete and on time.

Very important are our many Breezy Bit contributors: informal surveys indicate that this is the most-read page. If you have a new baby, puppy, guppy, spouse or house, give us a call and get your news in!

Tom and Penney retired as distribution managers last June, though they are still handling the commercial distribution. We have a new volunteer, beginning with this issue, who will manage the door-to-door delivery team: Charles Wesley-James of Stanley Avenue. Many of our delivery people too are NEN old-timers.

Carolyn will rely on your support as I have. I thank you — for your help, your good humour, your willingness to pitch in, and your team spirit. Please keep it up!

Season's Greetings and a Happy (and Promising) New Year!



By Mayor Jim Watson

As we prepare for the Holiday Season, I want to take this opportunity to wish you and your family the very best. In just a few days, we will usher in the new year and a new millennium. By the time you read this, we will probably know the Province's plans for restructuring government in Ottawa-Carleton.

As many of you know, I have been a firm supporter of a one city, one tier model as a

way to reduce costs and duplication. Regardless of the model the Province will choose, my pledge is to work with other local mayors and community leaders to ensure the transition is carried out as effectively as possible.

The other issue that should be resolved by mid-December is the City's 2000 budget. As a result of our aggressive efforts to fix the fiscal problems caused by the out-of-control spending of municipal governments in the 1980's, we have managed to reduce our debt by 40% since 1996 while holding the line on taxes. For the first time in many years, this budget actually calls for a tax decrease and a re-investment in community infrastructure and basic services, such as improved snow removal, as well as tree planting, litter pick-up and

anti-graffiti programs.

I have never been a supporter of the 1980's megaproject style of government. That philosophy put all levels of government in serious financial trouble. I hope we have learned our lesson. I believe the 2000 budget is a good balance between sound investment in our communities and respect for our taxpayers.

May I take this opportunity to thank you for your support, feedback and for giving me the honour of serving as Mayor of Ottawa — our Nation's Capital.

Happy Holidays!

Contact me:

111 Sussex Drive, Ottawa, Ontario, K1A 5A1

Telephone: 244-5380

Fax: 244-5379

E-mail:

watsonj@city.ottawa.on.ca

grabbaibba Fine Coffee



- * Cafe Latte
- * Moccaccino
- * Hot Chocolate
- * Cappuccino
- * Cafe au Lait

35 Beechwood Ave.
(At the corner of Mackay.)

Soups • Sandwiches • Salads
Coffee Beans • Gelato • Desserts

Neighbourhoods Stand Firm on Community Values: The Proposed NCC Dog-Walking Regulations



The RMN Dog Park Association Board of Directors: l-r, Catherine Mirsky, Nordeau Kanigsberg, Catherine MacLean, Sheila Nelles, Jennifer Stewart and their dogs Tanner, Benny, Fielder, Finch, Byron (behind), Bout de choux (held) and Tristan.

By Lorcan Scanlon

New Dog-Walking Proposal

Last month, the NCC proposed new regulations for walking dogs on its properties. The thrust of the new proposal is to forbid unleashed dogs on all NCC property. Dogs would be permitted to walk off leash in specially constructed fenced dog runs. However, these runs would have to be located far from residential settings and away from environmentally vulnerable land.

The NCC claims that there has been a dramatic rise in the occurrence of dog incidents – complaints, inquiries, warnings and observations – on its properties last year. This, it says, is one of the main reasons why it has developed the proposed new measures.

The NCC properties near us that are used for dog walking are Stanley Park, Pine Hill, the Rockeries (including the Hillsdale/Cloverdale park) and Mile Circle. In addition to those from Rockcliffe, Manor Park and New Edinburgh, dog walkers from the communities of Sandy Hill, Lower Town, Lindenlea, Gloucester and Vanier use these park areas.

An Offence to Dog Walkers' Values

The important values that dog walkers develop and share as a group are those of *participation and tolerance*. These are community values and in a very real way, dog walkers are community builders. They know all about working together to promote common interests, such as keeping their park clean with stoop and scoop and with annual cleanups. They also know the importance of accommodating other park users by, for

example, reining their dogs in when joggers are passing and keeping to the side of the park during soccer games. Their visible presence from early dawn until after dark keeps the park safe to visit – for dog owners and non-dog owners alike. Yes, there are conflicts from time to time – sometimes between dogs, sometimes between dog-walkers, and sometimes between dog walkers and others. Almost invariably these conflicts are resolved where they should be resolved – in the park.

Dog walkers were quick to realize that the proposed regulations would threaten these values of participation and tolerance. The “one size fits all” approach to regulating dog walking in the parks involved was in effect a denial of the value of participation.

Worse still, the proposed use of remotely located dog runs was seen as tantamount to abandoning the principle of tolerance in favour of the expediency of segregation. This kind of solution may be applicable to large metropolitan areas, where communities have become fragmented to the point that they no longer share a common purpose. In the view of dog walkers, it is certainly not appropriate for integrated communities such as Rockcliffe Park, Manor Park and New Edinburgh.

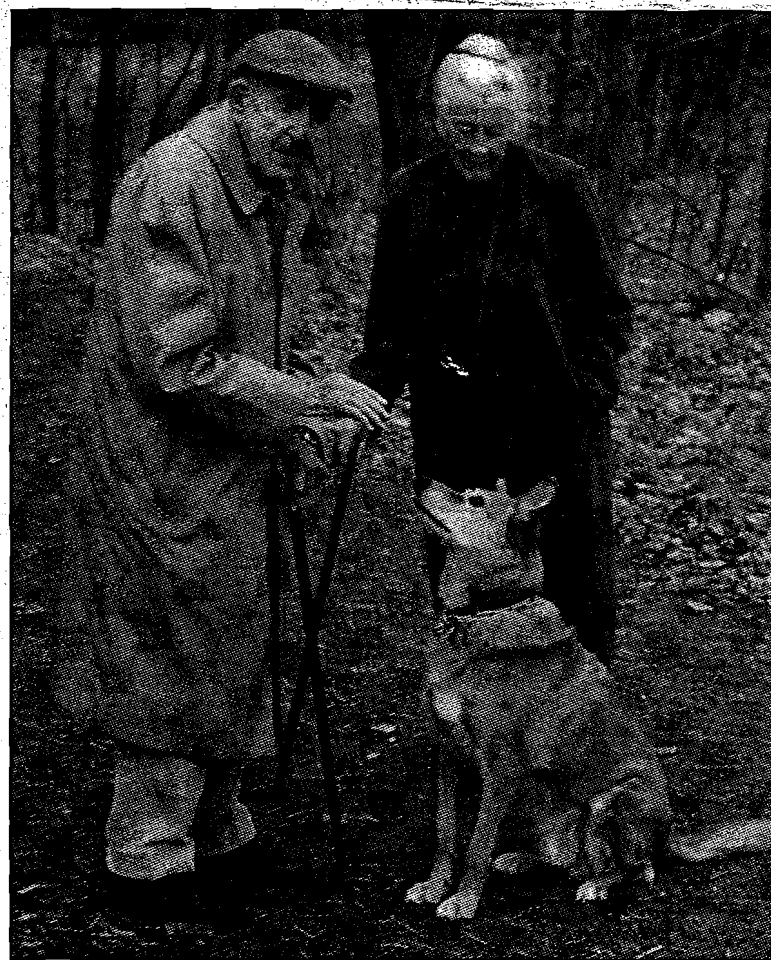
Something had to be done. Something was done.

The Dog Walkers' Response
The first step taken by local dog walkers was to organize their members for action. They formed a new association – the RMN (Rockcliffe, Manor Park and New Edinburgh) Dog Parks Association.

Next, they mobilized attendance at the belated consultative meeting held by the NCC earlier this month. The very large and very vocal turnout took NCC organizers quite by surprise.

Then, at a recent meeting of the Rockcliffe Park Village Council, it was decided, at the request of the RMN, that the Chief Administrative Officer would approach the NCC. He would ask that the present dog-walking arrangements be left as they are as far as NCC lands in and adjacent to Rockcliffe Park are concerned. Council also encouraged the inter-community collaboration reflected in RMN's composition.

Soon afterwards, Councillor Richard Cannings moved that the City of Ottawa express its opposition to the NCC's proposed regulations. This motion passed unanimously.



Ted and Brenda Beament of Ivy Crescent enjoy the benefits of off-leash dog-walking with their dog Simon. Abused and left chained on an abandoned farm to die of thirst, Simon was rescued by Willy Wilgress, advertised in the NEN two years ago, and offered a loving home by the Beaments. Photo: Andy Benoit

kari taylor
613.277.5683

dog gone
... walking!

A service for home alone pets

walking · socializing · feeding · home visits · loving



16 Pretoria Avenue
Ottawa ON K1S 1W7
565-0588

Welcoming
New Patients

Dr. Lynn Morgan
Dr. Kia Nielsen



COUNCILLOR



CONSEILLER

“Committed to the Community”

Richard Cannings

“se consacre à la communauté”

Bureau/Office: 244-5357 Fax: 244-5374 Résidence: 742-6420
111 Sussex, Ottawa, Ontario, K1N 5A1

Cannings



The RMN collected over 650 petitions against the proposed new regulations and forwarded them to the NCC.

It also prepared a detailed submission arguing against the proposed regulations and in favour of off-leash dog walking. The submission also contained recommendations for community participation. This document has been distributed to the Board of Directors of the NCC.

As we write, the RMN Dog Parks Association is preparing for a meeting with the NCC with a view to negotiating a community-based settlement to the question of responsible dog walking.

Looking Ahead

One may wish that these proposed regulations had not

been introduced; but they have. The important thing now is to move forward and to learn from the experience.

Dog walkers should never be caught off guard again. They are now organized and ready to participate in any discussions which the NCC may wish to hold in the future. As a result of the publicity given to this issue, a CBC Radio Noon phone-in show was devoted to the question of when and how regulatory bodies should consult communities *before* developing social policy. Such a consultation process will be greatly facilitated if there is an existing group to consult with.

This current crisis has forced dog-walkers and others as well to reflect further on the

values of community participation and community tolerance. It gives them an opportunity to renew their commitment to sharing in the common goal of keeping parks clean and safe, while respecting the interests of other park users.

Statistics Questionable

Finally, this entire business reminds us again: we should never accept uncritically the evidence of statistics.

According to documents provided by the NCC, the majority of those incidents reported to have occurred on Ontario urban lands in 1998, which were so important to the NCC case, *involved warnings issued on the Rideau Canal during winter*. Always follow those little asterisks!

Rabies Update

By Thomas Kral
Britanny Animal Hospital

Rabies is a fatal disease caused by a virus that can infect all mammals, including humans. This virus is widespread in Canada and since 1958 over 60,000 cases of the disease have been reported. Of these, approximately 25% have been in domestic animals while the remainder have been in wildlife. Historically, Ontario has had the highest incidence of rabies in all regions of Canada and the United States.

Between 1965 and 1986 the number of rabies cases in Canada averaged about 2,000 per year. Over the last 10 years, however, the annual number of rabies cases has dropped dramatically, and the reason for this decline has been the introduction of the fox baiting programme. Although the rabies virus can infect any mammal, different strains of the virus have a preference for certain animals. In the mid 1950's, an arctic fox strain made its way down from the north and likely became

responsible for the majority of cases here.

The fox baiting programme began 10 years ago and continues today. Each year, one million doses of rabies vaccine for foxes are distributed via an aerial drop system. This is an oral vaccine and can only protect foxes. Although the vaccine that is given by injection can be used in a number of different species, oral vaccines to date have been specific for only one species. Thanks to this vaccination programme, however, last year only two dogs and one cat were reported to have rabies, compared to 100 dogs in the year before the programme began.

In recent months, a new rabies threat has surfaced, this time in raccoons. This strain of rabies, different from the fox strain, was discovered in Florida in 1947 and since then has been moving northward. Its progress into Ontario has, for years, been hampered by the St. Lawrence River and by aggressive control measures

south of the border. Despite these barriers, on July 14 a rabid raccoon was found near Prescott and since then one, possibly two more cases have been identified. There was an immediate response by federal and provincial ministries involving a trap, vaccine and release programme, as well as aerial drops of oral vaccine for raccoons. These programmes have now stopped as the raccoons have settled in for the winter, but will resume again next year.

Rabies is a very serious disease with fatal consequences. The manner in which this disease is controlled underscores the importance of preventive vaccination. With the government agencies looking after the threat from wildlife, the responsibility of pet owners is to ensure that our pets are up-to-date with their vaccines. Hopefully, with such a concerted effort, rabies will one day be something we tell our grandchildren about, instead of the threat it is today.

Charlie Bagg's

Christmas Gift Creations

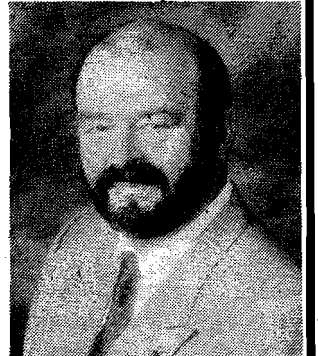
We've got Christmas gift baskets with pizzazz....

unique international cuisine, luscious chocolate,
luxurious spa & jazzy stocking stuffers

Call Lissa or Debbie at 860-1335 or check out
our web-site at www.charliebaggs.com

Regional Ward
R13

Quartier régional
R13

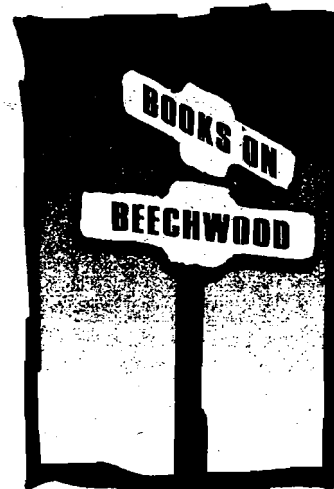


Councillor
JACQUES LEGENDRE

At your service:
111 Lisgar Street
Ottawa K2P 2L7

Conseiller
À votre service:
560-1219

Books on Beechwood



Jean Barton
Mary Mahoney

Phone us —
we gift wrap
and deliver.

OPEN: Mon. - Sat., 9:30 to 6:00
Sundays, noon - 4:00

VISIT OUR EXPANDED CHILDREN'S SECTION
35 Beechwood Ave. Ottawa, Ont. K1M 1M1
Tél. 613 742-5030 Fax 613 742-5033

NEED A CUT? SERVICES

Snow Blowing and
Ploughing
Salt and Sand
Service Available
Roof Snow and Ice
Removal

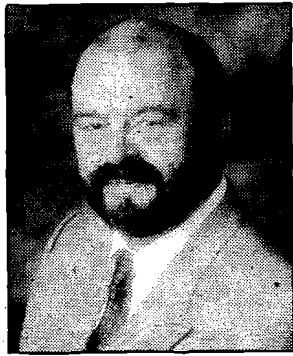


HANDYMAN

FREE ESTIMATES
731-2696

WORKERS DEDICATED TO DO
ANY JOBS AT "LOW PRICES"

Give us a Call — Big or Small We Do It All



Regional Councillor Jacques Legendre Reports

Governance

The governance issue is winding down at long last. By the time you read this, the report of the Special Advisor, Mr. Glen Shortliffe, will have been submitted to the Minister. As this is being written, I have heard that the Minister has promised that the report will be made public. We also expect that the Provincial Government will move quickly to introduce legislation to create a new municipal system in Ottawa-Carleton. Even though you will have fresh information to ponder on the governance issue, I thought that you ought to know the position that I submitted to Mr. Shortliffe as part of his public consultation. The complete text of my letter follows:

October 7, 1999

Dear Mr. Shortliffe,

I would like to offer a few thoughts on the municipal restructuring dossier with which you are seized. I realize that your mail will have increased of late so I will be as brief as possible.

In the first instance, I offer a copy of my annual report to constituents. I have flagged a few of the most relevant portions - Governance (p. 8), Are we competitive? (pp. 10,11) and A picture in time (p. 12). It is my hope that the facts gleaned from a long list of credible sources will be of some use as you sort through the varied views sent your way. The sources are listed on my web site:

www.rmoc.on.ca/jacqueslegendre

I do not support the notion of three municipalities for what is now Ottawa-Carleton. This area needs one voice on the national scene and indeed needs to have the ability to compete with the emerging city-states in the international marketplace. At three-quarters of a million in population we would, even so, be a relatively small agglomeration on that stage. We have no need to make the numbers even smaller at the same time as we introduce parochial three-city issues, imagining that our competition is across the street when everyone knows that it is really around the world. The relatively small New Ottawa would, I believe, compete effectively on that stage as may be shown by the KPMG 64-

city comparison of 1999 (Annual Report p. 10 -above). That study clearly showed that we already are extremely competitive. Statistics also show that the population in the National Capital area is extremely well-qualified and well-plugged-in to the modern realities of computers and the internet.

There is an aspect of Ottawa that I know will not escape your consideration. Ottawa is, of course, the National Capital. Canada is officially bilingual and it would be an incredible anomaly if its capital city were otherwise. On a practical level, the demographic numbers support such a designation (see p. 12 of the companion document). The National Capital rightfully should be a positive model for all municipalities in the country. This aspect of its governance ought to be recognized from its very beginnings. Currently, the Regional Municipality of Ottawa-Carleton, the City of Ottawa, the City of Vanier, the City of Cumberland as well as the City of Gloucester have either official language policies or policies on bilingualism. The web site mentioned elsewhere contains a report from the Regional Chair's Task Force on Bilingual Services - August 1998, which provides an overview of the situation in Ottawa-Carleton. The new structure should not represent an enormous leap back in time at its very inception.

I urge you not to recommend a Board of Control or Executive Committee for the new Council. Councils with such mechanisms are fundamentally undemocratic containing as they do an elitist element which is the very antithesis of democracy.

I believe that the most difficult aspect of the recommendations that you will submit to the Minister will have to do with the mechanism by which local communities and citizens will feel connected with their government. In that respect, I would indicate that the model published by the Centre on Governance of the University of Ottawa has much to offer, especially regarding the division of responsibilities. The main flaws that I see in the "Borough Model" are as follows:

- there are too many Councillors (28 + 1 mayor or 24 + 1 without the rurals) on the one-city Council to permit healthy debate;

- the load on the elected representatives when functioning in their capacity as members of a borough Council is much too heavy, especially as to the time factor, and will not be adequately compensated by making individual wards smaller than they are currently.

I believe that the experience in Toronto with its huge Council supports the first point. Having lived the experience in Ottawa-Carleton of a 33 member Council (32 Councillors + 1 Chair), it is simply not something I would wish on anyone. I expect that your own extensive experience of committee sizes in the Federal Civil Service would bear this out. The second point has to do with the actual workability of the borough model as described in the report from the Centre on Governance. It sounds fine until one considers the nature of the dossiers which the "boroughs" (a.k.a. local committees) will be charged with handling. It would appear that the designers at the Centre felt that the work-load of a Councillor is a strong function of ward size. It is not. Other factors are more important, chief amongst these is the actual job at hand. Borough Council meetings will be very time-consuming affairs - there is no way around it! The only model that I would recommend to you is that provided by the Village of Rockcliffe Park. It is a small municipality in my ward and I have come to know and understand it well, I hope. The entire public affairs (*la chose publique*) part of their business is conducted by unpaid elected Councillors and a committee structure strongly supported by community volunteers. People participate, in part, because they can really make a difference in their community. As you ponder whether or not to recommend a second tier of decision making, I would urge two things. If there is to be a second tier, then it should be meaningful. If there is to be a second tier, the Rockcliffe model should be examined closely. Perhaps, Vanier would also serve as an example although I know it less well. I believe that they provide a more workable structure that the borough structure of the Centre on Governance.

Thank you for taking on this task. I wish you well in the endeavour.

Sincerely yours,
Jacques Legendre

fantasy finishes

custom interior painting
by hilary armstrong

(613) 745-0182

Private Classical Guitar Lessons



Anthony Erb

748-1681

New Edinburgh Resident

ST. BRIGID'S ROMAN CATHOLIC CHURCH

CORNER OF ST. PATRICK AND CUMBERLAND



CHRISTMAS SCHEDULE

CHRISTMAS EVE

5:00 p.m. Children's Mass and Nativity Pageant
8:00 p.m. Carol Service
8:30 p.m. Christmas Eve Mass with Organ, Bass, Strings, Choir
10:15 p.m. Filipino Mass

CHRISTMAS DAY

10:00 a.m. Mass

DECEMBER 26-27

Saturday 5:00 p.m. Mass
Sunday 10:00 a.m. Mass
12:00 noon Mass

NEW YEAR'S EVE

5 p.m. Mass
Millennium Jubilee Year - Church Open All Night for Prayers and Meditation

NEW YEAR'S DAY

10:00 a.m. Mass
12:00 noon Mass

SENIORS, DON'T MOVE!

RETIRE-AT-HOME

Services Inc.



Irene Martin, RN

One Call,

798-5111

Takes Care of it All!

⇒ Personal Care ⇒ Hairdressing
⇒ Housekeeping ⇒ In-home Meals
⇒ Nursing ⇒ Personal Alarm
⇒ Foot Care ⇒ Groceries

⇒ Bilingual ⇒ Bonded Staff
⇒ Affordable ⇒ Veterans Welcome

Call for a Free Consultation!

www.RetireAtHome.on.ca

The Vanier Parkway Extension (VPE)

Most of you will know by various means that this transportation corridor has been definitely killed. This occurred recently as a preliminary "ruling" issued by the member of the Ontario Municipal Board (OMB). The member indicated, in an unusual move before the hearing was in fact over, that this part of the appeal against the Region's Official Plan would not be sustained, effectively driving a stake through this misbegotten notion once and for all.

The New Edinburgh Community has been successful in a struggle that is now literally decades long. The story of your fight will form part of the lore that will give heart to other communities as they face similar threats to their integrity. I want to pass along my congratulations and a hearty well-done to all in the community who have given of their time, provided expertise or otherwise contributed to this now legendary saga.

For those whom it may interest, I thought that I would share with you what appear to have been the most important circumstances and arguments which led to the result so long desired. First of all, I want to stress the importance of the new Regional Official Plan (1997) - ROP - as the prime point of reference for so much of the planning and transportation issues. You shared the struggle to make the ROP the progressive document that it is. That was the first step on the way to victory. The ROP was truly the background which contributed significantly to what happened. Affordability of various options was an important element of the new ROP. In addition, the following arguments were advanced by an integrated team, which included members of your community, as well as experts in several fields, ably led by Mr. Tim Marc of the RMOC's legal department:

- impact on homes on Crichton Street
- the value of New Edinburgh Park to both the New Edinburgh Community and the wider community in Ottawa-Carleton,
- the fact that the VPE would not provide relief from the heavy truck traffic in the downtown core and especially King Edward,
- expert transportation advice which said that the VPE would actually lead to more traffic on the portion of King Edward from Rideau to St. Patrick,
- the effect of the VPE on the Macdonald-Cartier bridge would likely interfere, because of the additional traffic load

on the A-50 leading to Gatineau and the resulting backups, with traffic seeking to use the bridge to go north on the A-5,

- a cost/benefit analysis which showed that a bridge at Petrie Island was to be favoured over the VPE,
- surprise testimony from experts, called by your opponents on this issue, to the effect that the impact on New Edinburgh of the VPE would be similar to the impact of the Macdonald-Cartier bridge on the King Edward community.

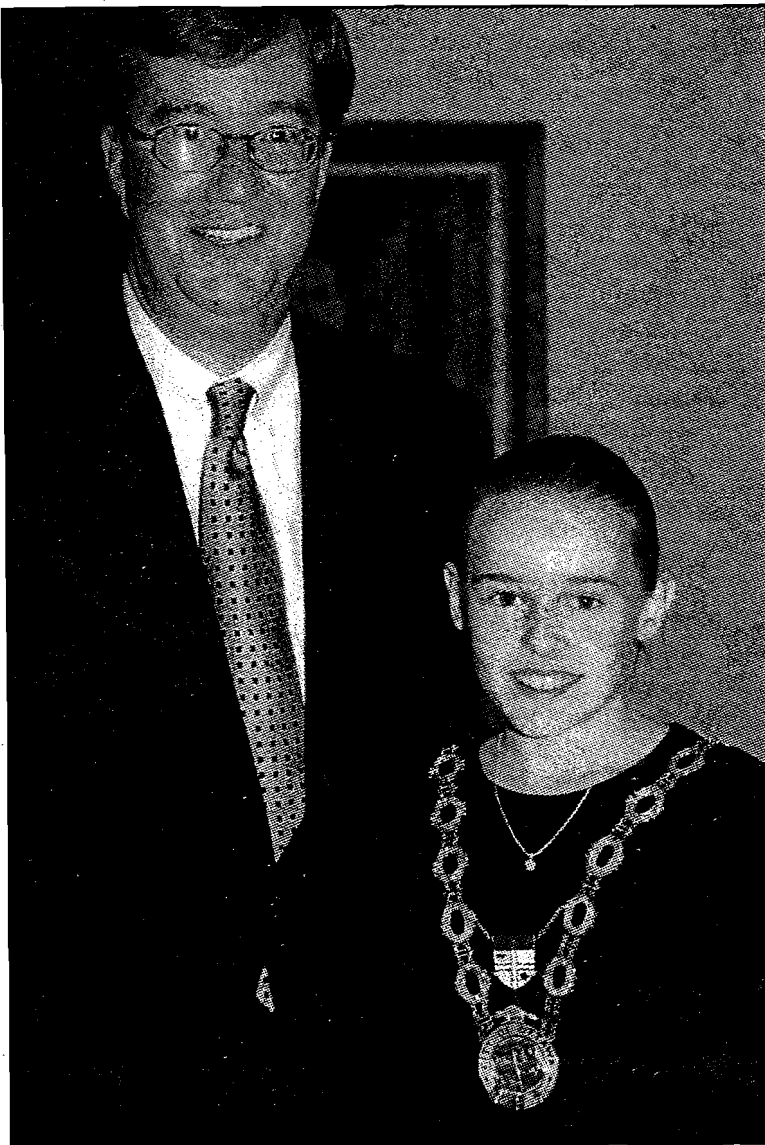
This brief summary does not do justice to all of the effort that went into your struggle over the years. I will leave it for others to write the definitive history of that battle. I want to tell you that I am very happy for you in this result and was pleased to have contributed where I could along the way.

The story of this OMB appeal is not complete. The issue of Kettle Island remains undecided. It was a hallmark of this last phase of the VPE struggle that communities across the Region were in solidarity on the important transportation corridors. I know that New Edinburghers will not forget their neighbours in Manor Park should the decision go against them.

Finally, I take this opportunity to wish you all a healthy and prosperous New Year.

You can reach me at:
Region of Ottawa-Carleton
111 Lisgar Street,
Ottawa, ON K2P 2L7
Tel: 560-1219, Fax: 560-1203
E-Mail: legendreja@rmoc.on.ca
Web Site:
www.rmoc.on.ca/jacqueslegendre

Grade 7 Student Isla Creates Named "Mayor for a Day"



Isla Creates, 12, of Noël Street in New Edinburgh, recently learned that being Mayor of Ottawa is not as easy as it looks. Isla got the opportunity to be "Mayor for a Day" after her parents, Warren Creates and Joan Duguid, won a draw at a charity event.

Isla spent a day shadowing full-time Mayor Jim Watson as he went about his duties, which included having a cup of tea with Their Excellencies, Adrienne Clarkson, Canada's Governor General, and John Ralston Saul. Isla was then off to Gloucester where that city's Mayor, Claudette Cain, signed an agreement with Mayor Watson on shared library services.

Isla's mother Joan shared some of her daughter's impressions of what it was like to be Mayor of Ottawa:

- "I'd never want to be mayor because it's way too hectic and too many people depend and rely on you."
- "We didn't have time to go to the bathroom all day."
- "You have to be organized."
- "(The Mayor) is such a nice man, I can't get over it!"
- "He loves bake sales!"
- "If I can do the shadowing again, count me in!"



Your Neighbourhood Specialist in Residential Real Estate



Accredited Buyer's Representative
President's Gold Award (1997)
Master Sales Award

office: 744-2000

fax: 745-2419

direct: 745-5950

web: www.hughdaleharris.com

201-5300 Canotek Road
Gloucester, Ontario K1J 1A4

ROYAL LEPAGE



Griffin • Kennedy
interiors inc.

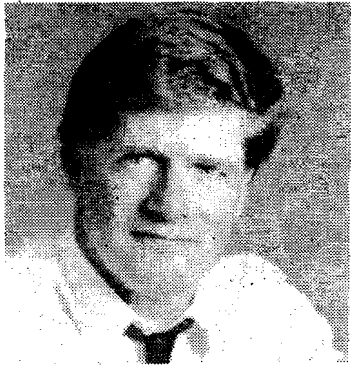
Celebrate the Season!

- Great Gift Ideas
 - Gold • Gold • Gold
 - Deck the Halls
 - Festive Accessories
 - Sparkling Topiaries
 - Glamorous Goodies
 - Gift Certificates
- Available

Monday to Friday: 9:30 - 5:30

Saturday: 10:00 - 5:00

141 beechwood ave., ottawa, canada, K1M 1L4
tel.: 747-0155 • fax: 747-1965



Ottawa City Councillor Richard Cannings Reports

Vanier Parkway Extension Dead

If the Vanier Parkway Extension could be likened to a black cloud, it has hung over this community for the past 30 years. That black cloud has now given way to a ray of sunshine. Our hearts and gratitude go to the people who fought this last battle but there is probably not a person in New Edinburgh today that could name the hundreds of volunteers who have helped since 1969 when the fight first began.

If there were one single issue that has dominated New Edinburgh, it would be the extension of the Vanier Parkway. Ever since it was announced, the

people of New Edinburgh have fought against it. In the 1980s this small community of just over 1000 homes raised \$85,000 to fight it at the Ontario Municipal Board. At that time the Community lost. While they lost that battle, in the end they won the war.

This valiant community drew the line in the sand when their quality of life was threatened and refused to back down in the face of the Region and the Federal Government. Over the years some of the best known spokespeople who have worked on preventing the extension of the Vanier Parkway include, Ed & Amy Browell, Hillary

Pearson, Michael Glover, David Henry, Rachel Baxter, Steve Cushing and Gail McEachern, but there were hundreds of other volunteers involved over the years, each and every one of them precious and vital. Hats off to everyone. A beautiful park in a beautiful neighbourhood will now be preserved.

It is a time to celebrate. Now we can spend our time beautifying the Park without the fear that it will be bulldozed. It was very timely that only days after the ruling from the OMB, rose bushes were planted at New Edinburgh Park. Thanks to everyone who came out to help plant the roses, especially Margaret Kemper-Trudeau, who arranged for the donation of the rose bushes, and Catherine Mirsky, who co-ordinated the volunteers.

We have held back for years on beautifying New Edinburgh Park yet slowly but surely we have created a magnificent park that we can be proud of and which attracts people from across the City. Now we can rest assured that we will be able to enjoy the park for many, many years to come.

Planting a Farewell Tree



A group of friends and neighbours gathered recently on the grounds of Rideau Hall to bid farewell to His Excellency the Rt. Hon. Roméo LeBlanc and Mrs. Diana Fowler LeBlanc at a tree planting ceremony near the main gate. Their Excellencies were good neighbours to New Edinburgh, as the many young Burghers who enjoy their summer afternoons on the Rideau Hall play structure can attest. *Photo: Sgt. Christian Coulombe*



From left to right: Catherine Mirsky, Councillor Richard Cannings, Gyde Sheppard, Margaret Kemper-Trudeau, Rosemary Sheppard, Gemma Kerr and Paul Benoit were among some of the volunteers who came out to New Edinburgh Park to plant rose bushes.



BREAD & ROSES BAKERY

Holiday baking from your neighbourhood bakers.

Christmas pudding, shortbread, ginger cookies, assorted fruitcakes, cranberry loaves, cranberry and raisin tarts.

11 Beechwood Avenue Ottawa, Ontario K1M 1M2
Phone: (613) 745-2087

Snazzy Seconds

On Consignment
Decorating, Downsizing
or Relocating?

Buy and sell your
Distinctive
Decorative
Accessories
&
Furnishings
at our
Boutique



289 Montreal Road, Vanier
745-7790

FOR ADDITIONS
AND RENOVATIONS
DESIGNED RIGHT
HERE IN NEW EDINBURGH

CALL CHLOË MCKINNEY
(BA BArch MRAIC)

AT 744 6331

NOW OPEN

Glasses and
contact lenses

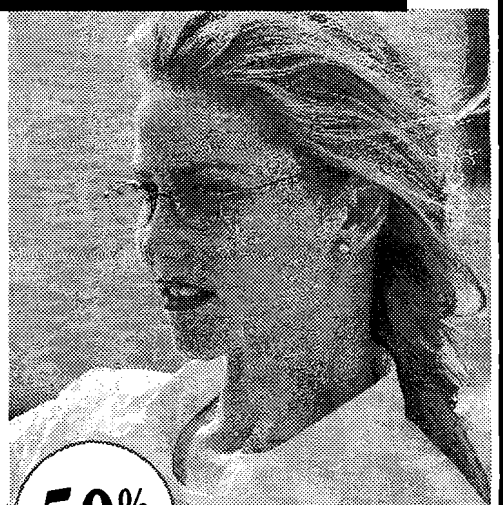
Frame lines
include:

Persol

Anne Klein

Silhouette

Georgio
Armani



50%
off

ALL LENSES
Call Store for details

NEW EDINBURGH OPTICAL

15 Beechwood

747-9393



— by Ethel Sivy Proulx —

Today's story comes from my cousin, Horace Aubrey, whom I spoke with in the fall of 1998. Although he only lived in the Burgh from 1933 to 1944, he has fond memories of those times when he was 12 to 23 years old. Here are some of his memories.

When Horace was 12, my father was a gardener at the Crannells' and the Russells' in Rockcliffe. He would pay Horace and my brother Eldon 25 cents an hour to cut grass. The Crannells had high terraces with sloping lawns, and Eldon would walk along the terrace hanging onto a rope tied to the lawnmower that Horace would push. In this way, they would make sure that the lawnmower wouldn't fall down the hill if Horace lost control. When they were finished their work, Horace and Eldon would walk down to Springfield and Beechwood where Mr. Jenson had a shoemaker shop. They would play with his sons, Sigfried and Carl.

Horace went to Crichton Street School, where he played many sports. There was a softball team at the school, and he participated in softball competitions. There was a rink on the boys' side with low boards for hockey. He and Bob Duncan were both great runners, but Bob was better at broad jump.

In the school basement, there was a branch of the Library run by Mrs. Johnston.

Horace loved to go and read there but couldn't take out books on his own because in those days you had to own land before you could borrow books. Eventually a neighbour signed for him. He could take out three books and would have them back in no time. The Librarian didn't believe Horace was reading so much, so used to question him and was surprised at how much he knew.

Horace and his friends learned to swim in the Rideau River behind Mr. Robins' store on Crichton Street. They would swim out to the big rock, mid-way across the river. The rock was high enough to dive off into the water. The boys had a china egg, which someone would hide on the bottom of the river, and they would all dive in to see who could find it. Whoever found it would hide it and the rest would search again.

In those days, one of the greatest decisions they had to make was whether to buy a bottle of Chum for five cents, or a bottle of Kik, which cost a penny more but was bigger. Horace remembers the bottling plant on Vaughan Street, where they made root beer and orange crush, and the old manufacturing plant called Sprolls, where, in the 1920s and 1930s, the original Senators hockey team had their hockey sticks made by a Mr. Proulx.

Many of their games were played on the street. One summer Horace and his friends ended up with a whole collection of croquet mallets — but they weren't interested in playing croquet. Instead, they would hop on their bicycles, take the mallets and play polo. There would be about six or eight boys, with three or four on each team. Since the curbs were high enough to keep the ball on the road, they could ride with one hand on the bike and swing the mallet with the other. Fortunately, they were pretty good at repairing bicycles, because playing polo was hard on the spokes. As well, they used to have teams and play Run-Sheep-Run. It was great fun, but sometimes they made so much noise that the police car would come by. The kids would run off into the nearby field with the police after them. Some got caught, and when they did the police would just kick them in the pants and tell them not to do it again.

In that same field, a little circus would set up in the summer. There were a few rides, but the entertainment to attract a crowd was a man who would go 60 or 70 feet up a tower, where he would stand on his head and set the tower swaying. It was awe-inspiring. Or someone would start the tower swaying and the man would walk off the tower and land in a large bucket of water strategically placed at its base.



Horace remembers hockey player Frank Boucher, who lived at the corner of Dufferin and Crichton, and whose son played goalie for them. Frank made sure his sons had lots of equipment. Cup McCreary, who ran the store at the corner of Crichton and Union, had played hockey and sponsored the team in the City League. John Cross from Mace Street was a good player. When he played, he stuck his tongue out between his teeth.

Horace also remembered things that seemed to happen each season. In the spring the ruts on the street sometimes became so deep that if you didn't get your car out quickly you'd be stuck there for weeks. Other times, there would be only one path along the road. It would be awkward when two cars approached from opposite directions. They would meet head-on and be stuck until one finally agreed to back up and give way to the other. The milkman and bread

man would come by sleigh during the winter and by wagon in the summer. When the iceman came in summer, the boys used to wait until the man delivered ice into the house and would then sneak up and take ice chips. And in the fall, the boys would buy potatoes and take them into the empty field and build a fire to roast them over.


Horace married in 1944 and lived at 128 Stanley. Then from 1946 to 1953, they moved to live at the National Research Council field station near Albion Road, but moved again once the children came along. Horace worked at the NRC for 45 ½ years at what he considered his hobby: electrical engineering. At the beginning of his career, he worked on the early development of radar in Canada. Horace and his wife Betty have been married for 54 years and have three children: a son and two daughters.

Stuck for gift ideas??

Let **101 BASKETS** help you with your Christmas list ... call for a free brochure or visit our website for photos and suggestions:

Tel. 747-7610
www.cyberus.ca/~info101baskets

Millennium gift baskets also available


Beechwood Optometry
 DR. J. LEDUC

NOW OPEN

178 Beechwood Avenue

Complete Eye Examination Examen complet de la vue

Quality Eyewear Selection Collection de lunette de soleil

Sunglasses Collection Selection de lunettes de qualité

Custom Contact Lens Fitting Verre de contact sur mesure

Tel: 749 0481
www.bwopt.com

CLOTHES ENCOUNTERS
OF A SECOND TIME

Distinctive Resale Fashions

Millennium Madness Sale
January 2000

Monday - Saturday 9:30 - 5:00
 (Fridays until 6:00)
 Sundays, 12 - 5:00



67 BEECHWOOD AVENUE 741-7887

**Le renouvellement
de votre prêt
hypothécaire
vous donne des
palpitations ?**

**Are you stressed
out about
renewing your
mortgage?**



**Soyez
rassuré !**

**We've got
the solution!**

**Voici deux conseils hyper
avantageux pour vous !**

**Here are two super
tips for you!**

Cinq ans, c'est rassurant

Les taux d'intérêt sont à leur plus bas niveau depuis 40 ans. En optant pour un terme de cinq ans, vous profitez non seulement de ce contexte favorable, mais vous stabilisez votre budget à long terme. Imaginez... aucune hausse de remboursement hypothécaire pour les cinq prochaines années!

Plus vous payez souvent, plus vous économisez

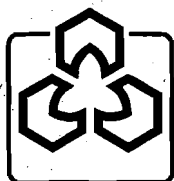
En payant votre hypothèque chaque semaine plutôt qu'une fois par mois, vous remboursez plus rapidement votre prêt et vous économisez de façon remarquable sur les intérêts courus. Voilà un conseil qui peut vous rapporter gros!

Five years, now that's reassuring!

Interest rates are at a 40-year low. If you choose a five-year term, you will not only be taking advantage of the favourable conditions, but you will also be stabilizing your long-term budget. Imagine... no mortgage payment increases for the next five years!

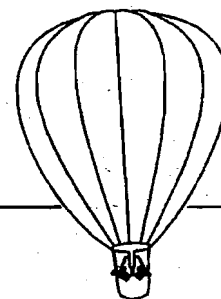
The more often you pay, the more you save

If you make weekly instead of monthly payments, you will be paying back your loan more quickly and make huge savings in interest charges. That's a piece of advice which could help you save big time!



**La Caisse populaire
St-Charles d'Ottawa Ltée**

99, avenue Beechwood, Ottawa (Ontario) K1M 1L7
(613) 745-0071 Télécopieur : (613) 747-8510
www.caisse.st-charles@sympatico.ca





Crichton Community Council

By Melodie Salter

Here we are, almost at the end of the century. Sounds impressive, but life in the Burgh goes on with all its ups and downs. Our attempt to start up community programming in Mackay Church hasn't been overly successful. Registration was poor and only two courses, Tai Chi and Yoga are running. Granted, growing pains are to be expected, so we will attempt some winter courses and see what happens. We're having difficulty determining what people want, so please give us your input. Call Rosemary at 747-0239 or any Council member and give us your ideas.

The Garage Sale receipts are all in and the Draws completed. Congratulations to the winners and my sincere thanks the New Edinburgh Merchants who donated prizes. Thanks to Isobel Bisby

who coordinated the prizes. Thank you all for your support and participation.

The Halloween Howl was great fun and it was good to have it again. Thanks to Bronwyn Funicello for reviving this event. It was the first time at the new field house and it worked very well.

The skating season will soon be upon us. The Council has hired Ryan Hardy to run the rink this season. Ryan brings with him lots of experience. Several of last year's attendants plan to come back so it will be business as usual! Check out the rink schedule and we'll see you over there. Don't forget the Annual Skating Party scheduled for Saturday, January 29, 2000.

On behalf of the Council, I'd like to wish you all a wonderful holiday season and **HAPPY NEW YEAR!!!**

Crichton Community Council 1999-2000

Executive

President, Melodie Salter	744-0672
Vice-President, Jill Hardy	746-1323
Treasurer, Joyce Dubuc	745-9904
Secretary, Susan Torrie	741-9905

Members at Large

Kristina Beasley	Cathy McConkey
Isobel Bisby	Diane Mayer
Bronwyn Funicello	Penney Place
Roger Hardy	Bahija Reghai

Program Coordinator

Rosemary Salter	747-0239
-----------------	----------

New Edinburgh Rink Schedule 1999-2000

MONDAY	CLOSED
TUESDAY	4 - 9 pm
WEDNESDAY	4 - 9 pm
THURSDAY	4 - 9 pm
FRIDAY	4 - 10 pm
SATURDAY	1 - 9 pm
SUNDAY	12 - 6 pm



Holiday Schedule (weather permitting)

Wed. Dec.22	1:00 - 8:00
Thurs. Dec.23	1:00 - 8:00
Fri. Dec.24	12:00 - 4:00
Sat. Dec.25	CLOSED
Sun. Dec.26	1:00 - 6:00
Mon. Dec.27	1:00 - 8:00
Tues. Dec.28	1:00 - 8:00
Wed. Dec.29	1:00 - 8:00
Thurs. Dec.30	1:00 - 8:00
Fri. Dec.31	1:00 - 5:00
Sat. Jan.1	CLOSED
Sun. Jan.2	12:00 - 6:00
Mon. Jan.3	1:00 - 8:00
Tues. Jan.4	1:00 - 8:00

HAIR BY LONNY



straight perms • foil
highlights • rod-to-
roller perms for fine
hair • cuts • styling

Supplier of brand-name
products:
Phytologie, Nexus and
Murad

Free consultations for
weddings and
graduations

At **Rendezvous**
10 Beechwood Ave.
745-3993



Halloween Howl photos by Peter Glasgow



Bilingual Service /
Service Bilingue

Come see us at the
Beechwood Dental Clinic
16 Beechwood Ave. Unit 101
744-4765

We will bring back your smile
in no time!

Dr. Lisane Paquette &
Dr. Hania Quraishi
Open Evenings & Weekends

19-21 Beechwood

749-5959



Pittsburgh PAINTS

JOLICOEUR LTD.

QUINCAILLERIE
FENÊTRES / GRILLAGES
PEINTURE
ACCESSOIRES DE MAISON

HARDWARE
WINDOWS / SCREENS
PAINT
HOUSEWARES

Rental
Management
for the
Foreign Service
Community



Our services include:

- market analysis
- preparation of documents
- reporting
- maintenance
- regular inspections
- simplified & competitive fees

We've been there... we care!

Mary Ellen Boomgaardt
Representative
1-613-746-2367

390 Rideau Street E.P.O.
P.O. Box 20118
Ottawa, Ontario K1N 9N5

(RICHTON COMMUNITY COUNCIL HALLOWE'EN HOWL



By Bronwyn Funicello

On October 30, 1999 about 100 ghosts, goblins, witches, princesses and other creatively costumed children and adults invaded the Stanley Park field house to attend the annual Halloween Howl.

Pumpkin Games

At this year's event activities for Howl-goers included decorating the always popular mini-pumpkins. Participants glued and glittered their plain old pumpkins into artistic masterpieces to take home. Guests also had an opportunity to test their skill at the pumpkin bean bag toss. Those who tossed the plush pumpkin into the bushel basket won a prize.

Ghostly Gingerbread

The fun didn't stop there. A lot of enjoyment (and even more nibbling) centred around the ghost gingerbread-cookie decorating table. At this activity about ten dozen gingerbread ghosts were decorated with royal icing and candy, and then quickly devoured.

Sweet Treats

Those who needed more sweet treats could try their hand at the chocolate kiss shell game. When participants guessed which cup the chocolate kiss was hiding under, they got to eat it!

For those with more creative energy to burn there were treat bags to decorate. Using a variety of materials, children turned ordinary brown bags into works of art.

Scary

The most daring let their hands wander into the mystery box. What was that thing in there anyway?

We can't forget the ghost badges. With a little pulling, blood-red marking and taping, ordinary cotton balls were transformed into ghost badges (indicating the touch - or bite? - of a ghost).

Everyone who came enjoyed

Halloween Howl's traditional ghost lollipops.

Communi-Tree

The New Edinburgh Communi-Tree, a new activity this year, allowed participants to leave something of themselves behind. Participants were encouraged to trace their hands on paper, cut, decorate and sign them and then place them on the 'Communi-Tree' to represent the leaves. We certainly have a bunch of budding artists out there!

Pumpkin Challenge

Some local businesses and community groups got into the spirit this year by participating in yet another new feature: "The Great New Edinburgh Pumpkin Challenge". Local businesses and community organizations were invited to carve a pumpkin and donate it to the Halloween Howl. All of the jack-o-lanterns were on display at the party, and guests had the opportunity to vote for their favourite pumpkin. At the end of the Howl a winner was selected for each pumpkin. The winners took their prize pumpkins home.

Many thanks to all our carvers and congratulations to the lucky pumpkin winners. Our pumpkin-carving artists (and lucky winners) were:

Loeb Beechwood

(John Salter-MacDonald)

NECA

(Jean Szeles)

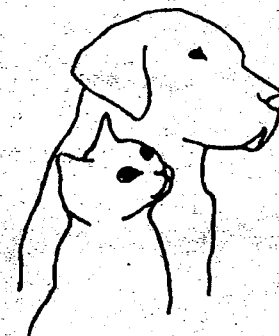
Mountain Equipment Co-op

(Michael Emmett)

Diane's Playce Child Care

(Sam Stevens)

The New BRITTANY ANIMAL HOSPITAL



Thomas Kral,
B.Sc., D.V.M.

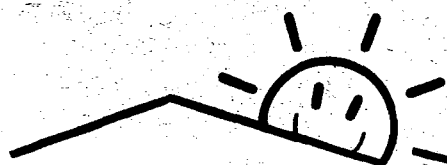
Susan Crump,
B.Sc., D.V.M.

Graham Child,
B.Sc., D.V.M.

603 Cummings
Ave.

(at Montreal Rd.)

749-2143



Rockcliffe Child Care Centre

Pre-school Program (ages 2 - 4)

Kindergarten Program (ages 4 - 5)

School-age Program (ages 6 - 12)

Phone For Information About Spaces Available

745-8005

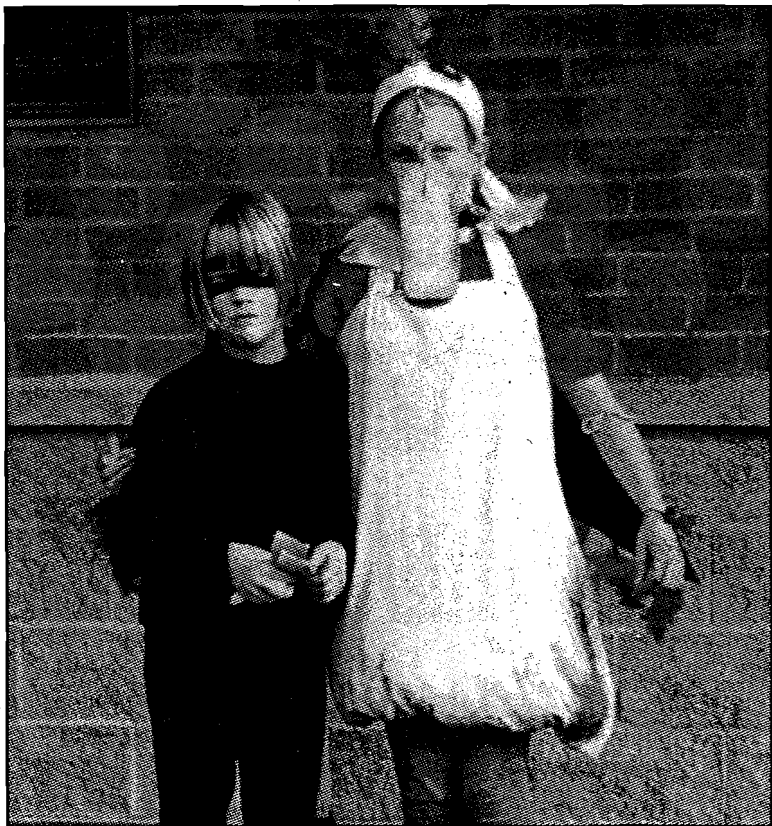
ST. LAURENT TAILORING

Alterations and repairs for ladies and gentlemen



367 St. Laurent Blvd.
Manor Park Shopping Centre
741-2763

Paul Schaub
Closed Mondays



Crichton Community Council
(Lisa Dixon)
Books on Beechwood
(Joy Illman)

Our Warmest Thanks

The last item is by far the most important. So many people came out and enjoyed themselves at the 1999 Halloween Howl. This would not have been possible without the work of the dedicated volunteers who put it together. A big thank you to the long list of people who helped out. They were: Jill Hardy, Penney Place, Diane Mayer, Melodie Salter, John Salter-MacDonald, the Illman family, Ryan Hardy (the clown), Rick Blanks (the

convict), Mike Nykalyk (the devil), Will Schweizer (Scream), Jason Atkinson, Joey Khan, Donna Gadde, Ann Jarrett, Dylan Brethour and Anna Leshinskaya.

Photographs

We were very fortunate this year in having a volunteer photographer on hand, Peter Glasgow. Peter generously printed three sets of copies, and is making them available to the Howl guests. All the photos we could fit in are printed in this paper, but there were many more. Bronwyn Funicello has the prints: call her at 749-7712 if you want a copy.



Alexander Winter

M.D., C.C.F.P.

Family Medicine
&
Care of the Elderly

75 Bruyère Street, suite 114
Ottawa, Ontario
K1N 5C8

Tel: (613) 244-0006
Fax: (613) 244-4449



Winter Courses at the Lindenlea Community Centre

The newly refurbished Lindenlea Community Centre at 15 Rockcliffe Way is offering a wide variety of courses for children and adults (also teens and seniors). The winter term runs from January 10 to March 31 (no children's courses during week of March 13-17).

You can register at the Centre any Wednesday evening between 6:30 and 8 o'clock. Cheques should be made payable to the Lindenlea Community Association. There is a late fee for registration after January 15.

For more information, call Moira White, General Manager, at 742-5011 or fax 746-2555.

CHILDREN'S PROGRAMS (beginning week of Jan. 10)

Mon. & Fri. Playgroup
9:30-11 am
Play, snacks and crafts.
\$30

Tues. & Thurs. Playgroup
9:30-11 am
Play, snacks and crafts.
\$30

Afterschool Art
Mon., 3:30-5 pm, 11 weeks
Instructor: Pamela Lasserre
Ages 6-9
\$85, supplies included.

Advanced Art
Thurs., 3:45-5:15, 11 weeks
Instructor: Pamela Lasserre
Grade 5 and up
\$90, supplies included

Preschool Art
Thurs., 2-3:30 pm, 11 weeks
Instructor: Pamela Lasserre
Ages 3-5
\$85, including supplies

Preballet

Tues. 2:15-3 pm, 11 weeks
Instructor: Francisca Filleul
Ages 3 & 4
\$60

Preballet/Dance

Tues. 3-4 pm, 11 weeks
Instructor: Francisca Filleul
Ages 4+ with some experience
\$65

Ballet/Dance

Tues., 4-5 pm, 11 weeks
Instructor: Francisca Filleul
Ages 6+ with ballet experience

Brownies

Wed., 3:45-5:15 pm
Ages 8 & 9 (b. 1991, 1992)
Information: Carolina McLaughlin, 748-3869 or Theresa Bootsma, 742-0189.
Cost. \$50 (to Girl Guides of Canada)

Tae Kwon Do

Instructor: Taylor Haas
Beginners: Sat., 1-2 pm, 11 weeks, \$55 (testing extra);
Advanced: Sat., 2-3 & Tues., 5-6, \$90 (testing extra)

ADULTS & SENIORS (January 3-March 31)

Morning Aerobics

Mon, Wed & Fri, 8-9 am
Instr: Françoise Steadman
One-day, \$52; 2-days, \$100;
3-days, \$140.

Aerobics with Nancy

Sat., 8:30-9 am (from Jan 8)
Tues & Thurs, 6-7 pm
Instructor: Nancy McKendry
One-day, \$52; 2-days, \$100;
3-days, \$140

Stretch & Strength

Sat., 10-11 am;
Tues. & Thurs, 6-7 pm
Instr: Alexandra MacDonald
One-day, \$48; 2-day, \$90; 3-day, \$130

Walk for Fitness

Tues & Thurs, 8:45-10 am
Instructor: Nina LePage
One-day, \$52; 2-days, \$100

Tae Kwon Do for Adults

Sat., noon-1 pm, 13 weeks
Instructor: Taylor Haas
\$55 (plus testing)

Seniors' Art

Wed., 10 am-noon
On-going workshop. Call Centre for information.

Bridge

Call the Centre for information.

TEEN PROGRAMS

Teen Aerobics

Mondays, 7-8 pm, 10 weeks
Instructor: Laura Steadman
\$50

Teen Ballet

Tues., 8:30-9:30 pm, 10 weeks
Instructor: Francisca Filleul
\$60

ACCOUNTING SERVICES

Small business services, financial statements, bookkeeping, payroll, personal & corporate tax returns, fully computerized.

Michael K. Edwards, C.A.
Email: mke@magma.ca

Tel: 749-7013
Fax: 749-6603

FLUTE REPAIR



Expert work on all makes of flutes
Annual Maintenance

Peggy Rath, Flutist
230-1404

168 Goulburn Ave.
Ottawa, Ontario
K1N 8E2

Ottawa-Carleton District School Board



CYNTHIA BLEDE
Trustee

EDUCATION IS THE KEY

Tel: 749-9140 Fax: 749-8651
cbled@ocdsb.edu.on.ca

Marnie Edwards R.M.T.

Registered Massage Therapist

Serving New Edinburgh, Rockcliffe and Manor Park

- ♦ Back Pain, Sports and Repetitive Strain Injuries, Whiplash
- ♦ Headaches, Insomnia, Chronic Fatigue, Arthritis, Stroke

AND MORE

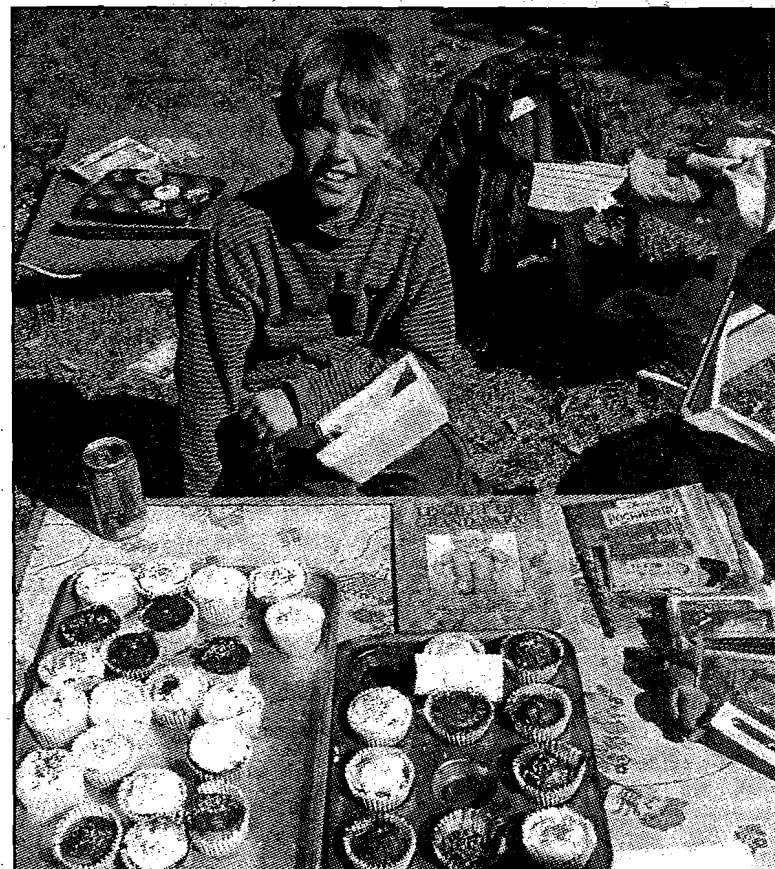
For an appointment, Call 741 3470
Clients may also be treated in the privacy of their homes.
Please call for more information

10 Braemar St
Manor Park

Great New Edinburgh Garage Sale – 1999!



Garage sale photos by Peter Glasgow



LESTER'S

YOUR NEIGHBOURHOOD

BARBER SHOP

MON. - THURS.

8:00 a.m. - 5:30 p.m.

FRIDAY

8:00 a.m. - 6:00 p.m.

SATURDAY

8:00 a.m. - 5:00 p.m.

LESTER & KIM

Telephone: 745-9623

13 Beechwood

K1M 1M2



Experienced Teacher Professional Flutist

Now accepting new students
Flute, recorder, theory
All levels and ages welcome!

BEVERLEY ROBINSON - 744-8190

You are Invited

It is with pleasure that we invite you to one of the
National Capital Region's premier Candlelight Services,
Beechwood's 5th Annual Service on
Saturday, December 11, 1999.

This special evening begins at 6:00 p.m. and will be
filled with joyous songs of the Christmas Season
led by our special guests,

The Cumberland Community Singers.

Also, bring an ornament to hang on our Remembrance
Tree in memory of a loved one. A spectacular
tree-lighting ceremony will conclude the evening.
Refreshments will also be served.

Cimetière
Beechwood
Cemetery

280 Beechwood Avenue, 741-9530

Donations will be accepted on behalf of the Snowsuit Fund



Century 21

Action Power Team Ltd.
Realtor

**ONE NUMBER TO
REMEMBER**

276-LISE(5473)

OUT OF TOWN CALL 1-888-530-2121

For all your REAL ESTATE needs
call your neighbourhood professional

Lise Vaillancourt
associate broker

613-837-3800

613-276-LISE(5473)



As usual, the New Edinburgh Garage Sale was a great event that fully justified the many months of anticipation. The weather was sunny and fine, and crowds turned out in force. The only complaint came from our photographer, Peter Glasgow: it was too sunny, he said, for good picture-taking. Thanks to all the vendors who promptly turned in 10 per cent of their sales to the Community Council. The Garage Sale is the main source of funds for all our special events and activities.

Congratulations to the Garage Sale prize winners! We thank our New Edinburgh merchants who contributed the fabulous prizes.

PRIZES FOR HIGHEST DONATION OF SALES:

Mackay United Church

Food voucher from Crichton Community Council

St. Luke Lutheran Church

Food voucher from Crichton Community Council

J. Dougherty & J. Bouza

Gift certificate from TRATTORIA ZINGARO

G. Gittens

certificate from EL MESON

H. Matthews

Gift certificate from BOOKS ON BEECHWOOD

St. John Lutheran Church

Food voucher from Crichton Community Council

PRIZES FOR THE RANDOM DRAWS:

A. Hallett

Gift certificate from DANNY'S BAR & GRILL

A. Labelle

Cake from RYLEY MACLACHLAN

McDonald/White

Gift certificate from RENDEZVOUS HAIR & ESTHETICS

M. Markowsky

Gift certificate from SUN TREE FRAMING

L. Sherman

Carnations from FLOWER MANIA

H. Allen

Gift bag from BIRDER'S CORNER

D. Rivington

Movie rental from VIDEO SHACK

A & C Wesley-Jones

Movie rental from VIDEO SHACK



NEW EDINBURGH

International

PUB & EATERY

HOURS: Mon. - Sat., 11 a.m. - 1 a.m.; Sun., 10:30 a.m. - 11 p.m.

1 Beechwood Avenue

www.newed.com

Tel. 748-9809

Specials throughout the week:

TUESDAYS — 25¢ Wings

THURSDAYS — Mussels - 1 lb. for \$5.00

FRIDAYS — Chicken & Ribs \$8.99

SATURDAYS — 2 - 4 - 1 Fajitas, 5 - 9 p.m.

— Dave Kalil entertains from

9:30 p.m. - 1 a.m.

SUNDAYS — Brunch, 10:30 a.m. -

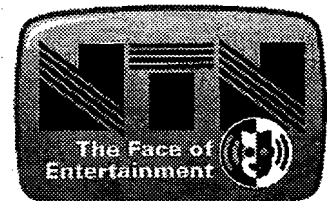
1:30 p.m.

— Our kitchen stays open until closing time and we offer full menu.

Feel like Fajitas at midnight?

Come on down!

We're #1 For Fun on Beechwood



The Pub now offers this popular Interactive Trivia Game. You compete against other patrons as well as other bars across North America.

HOLIDAY HOURS: December 24 — Closing at 4 p.m.

December 25 and 26 — closed

December 31 — Closing at 4 p.m.

January 1 — Closed

BEECHWOOD

PET STUDIO

🐾 Grooming / Toilettage 🐾

🐾 Boarding / Pension 🐾

🐾 Supplies / Accessoires 🐾

Jean-Marc Lanthier 78 Beechwood Avenue • Vanier • Ontario • K1L 8B2 (613) 747-6568

Come and visit our new renovated space!

Coming Up Roses!



By Margaret Trudeau Kemper

On a chilly afternoon in early November a dedicated group belonging to "Friends of the Park", initiated by Ed Browell, planted thirty John Davis Explorer Series rose bushes alongside the tennis courts. [See article on Community Award for Ed also in this issue.] The City of Ottawa - thanks to Richard Cannings - prepared six rototilled circles that I had planned as the way the bushes would be massed. The bushes will take three years to become fully established but we hope they will surprise us with a blossoming in early June.

On behalf of all the Friends of the Park (the silent majority as Richard calls us) I would like to thank John and Estelle Laporte from Laporte

Nurseries on Queen Street in Orleans, who contributed all the roses. The Laportes grow excellent stock, and have a beautiful establishment. To find them, take Highway 17 east to Trim Road. From Trim, turn left onto Queen Street. Estelle grows the roses in a most superior way and is an expert "rosier". Thank you, John and Estelle, for your generosity and goodwill.

Here is an expert's description of the John Davis rose:

"Davis has all the makings of a star. When they unfold the semi-double blooms flatten the outside petals. They are a deep orchid pink at this stage. Gradually the center unfolds until the blossom lies open fading to a lighter shade of pink. . . It is also one of the hardest new varieties. The

bush is vigorous and somewhat sprawling, eventually becoming large lax bushes. Our specimens have never winter-killed in the slightest and I have no doubt it will prove hardy far into the north. . . it is also highly disease resistant" (Robert Osborne, *Roses for Canadian Gardens*).

In the spring Phase II of the project will commence. We are thinking of surrounding the rose bed circles with stones. Volunteer stones. There will also be important tasks to be done, such as feeding, watering and nurturing of our little bushes. If anyone would like to offer some help in the rose project or any of the other initiatives Friends of the Park undertake, Ed Browell is the man to contact if you want to volunteer next spring.

Now, I do believe roses are beautiful listeners who are encouraged by admiring remarks about their beauty etc. So please feel free to chat up our roses. Like all living things they need encouragement. And thank you again to all the volunteers who helped us achieve our goal of enhancing the beauty of our already wonderful park.

COMPETITIVE PRICES

Established in the Burgh
for over 10 years

FUOCO • CRONIER

CONSTRUCTION &
RENOVATIONS

planning & design

• OFFICE INTERIORS •

• STORES •

* HOME ALTERATIONS
and ADDITIONS

FREE ESTIMATE

744-3801

55 Vaughan — Ottawa



YOUR TIME IS VALUABLE.

Do you want someone to talk to you about your investment needs, but don't feel there is anyone available at unusual hours?

Bay Street may be closed, but I'm open for business to serve you. Call any time and let me know when you would like to talk. Better yet, drop by. And don't bother to knock. It's open. I will make myself available to you, anytime anyday.



Elizabeth McLean

Investment Representative
266 Beechwood Avenue, Suite A
Ottawa, ON K1L 8A7

Tel (613) 742-6811

Tel (613) 747-1910

Edward Jones®

Serving Individual Investors

<http://www.edwardjones.com>

Member CIPF

AU COEUR DE NEW EDINBURGH...

Un jardin de jeux, de rires,
de découvertes et de joies



Diane's Playce Childcare

Un service de garde bilingue en milieu familial

Établi depuis 1988

745-9379

Our Neighborhood Trees

By Paul Benoit

How many significant trees are there in New Edinburgh? That is the question the City of Ottawa would like to have answered. It was not idle curiosity but pressing concern at both an environmental and planning level that led the City of Ottawa to sponsor a one-day workshop, on October 2nd, on the importance of trees to the quality of urban life.

The workshop was run by Ms. Diane Huffman, of Land Strategies, a consultant hired by the City's Department of Urban Planning and Public Works. Brian Smith, the City arborist, was in attendance. Participating in the workshop were representatives from the community associations in the central core of the city and the surrounding neighborhoods. Two local politicians, Elizabeth Arnold and Diane Holmes, were also present, as were a few individuals who came out of personal interest.

Sadly, the City has come to the conclusion that it is only by educating individual citizens and especially community associations on the importance of our trees that

central Ottawa will be able to retain an agreeable lifestyle. Apparently, the City does not feel that it has the legal authority to oblige individual or corporate developers to conserve trees on private property. And as we learned, 90 percent of all significant trees are on private property. Many of those that are on public property are exposed to considerable pollution, excessive heat, and inadequate water. More recently planted trees on public property cannot be expected to grow to full maturity. We learned that it requires 35 newly planted trees to bear the same ecological benefit as one mature tree. Nor does the City have the money or the tax room to offer financial incentives to property owners to plant or conserve trees. Although various levels of government will occasionally make available young trees for sale at subsidized prices.

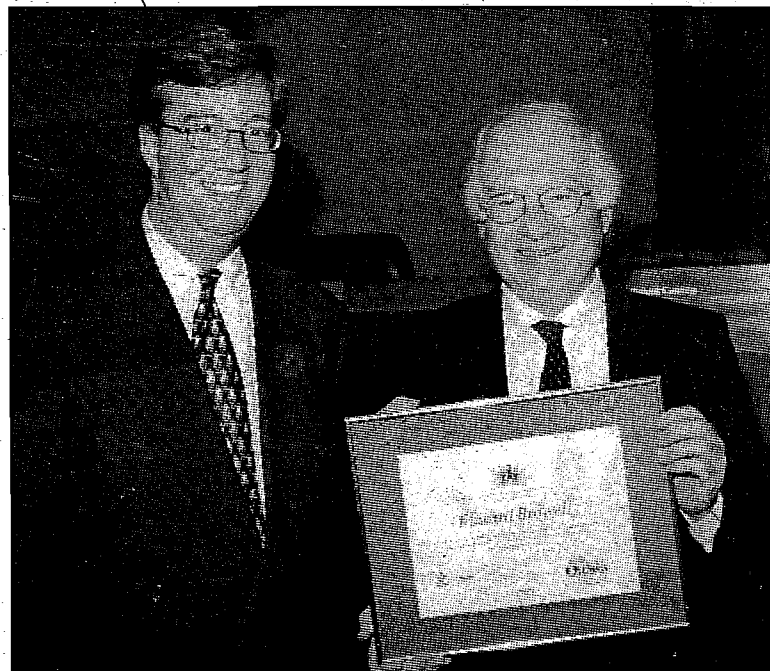
Participants in the workshop were shown various sample surveys and the kinds of different information that could be recorded. In assessing the trees on

individual property, four criteria were to be noted: the size, the species, the location (front, back or side of property) and the condition (good, fair, poor or dead). Of course, not all trees need be recorded. Newly planted trees or smaller trees, while providing enjoyment to their owners, are at a stage more akin to that of a private garden than a community asset.

NECA is encouraged by the City to conduct an inventory of its significant neighborhood trees. It may be possible to get a small grant to help us carry out the work next summer. The data gathered would form an important part in the ongoing brief that NECA carries to planning offices at different levels over myriad development issues. Ideally, if we could get a half-dozen volunteers, young or old, to cover off different sections of the Burgh, it should not require too great a commitment on anyone's part.

If you are interested in participating or would like more information, please contact Paul Benoit at 747-7947.

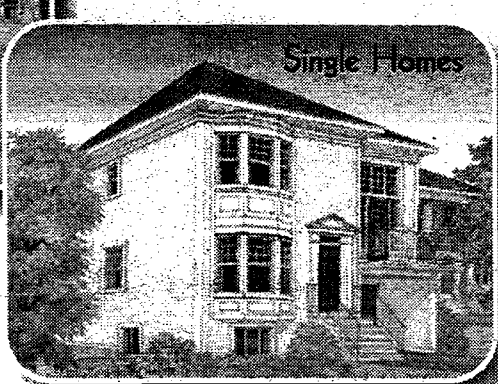
Ed Browell Receives Community Pride Achievement Award



Mayor Jim Watson recently presented Edward Browell with a City of Ottawa Community Pride Achievement Award for his work with Friends of the Park. The hard work and dedication of Ed's team has already resulted in a variety of park improvements, from the removal of old concrete, steel rods, fences and railway tracks, to the extension of the stone dust path, new seeding and repair of the original swimming pool wall by the Rideau River. The most recent improvement was the rose bush planting a week or two ago beside the tennis courts. (See Margaret Trudeau Kemper's article in this issue.)



Townhomes *



Single Homes

Ten elegant styles of 2-storey, 3-storey & back-to-back townhomes

starting at \$140,000

with sizes from 1217 to 1854 square feet.

Spacious single homes in three charming styles

starting at \$200,000

with sizes from 2037 to 2050 square feet.

Old neighbourhood.

You don't have to resign yourself to living in the suburbs to get that brand new dream home.

And you don't have to launch a

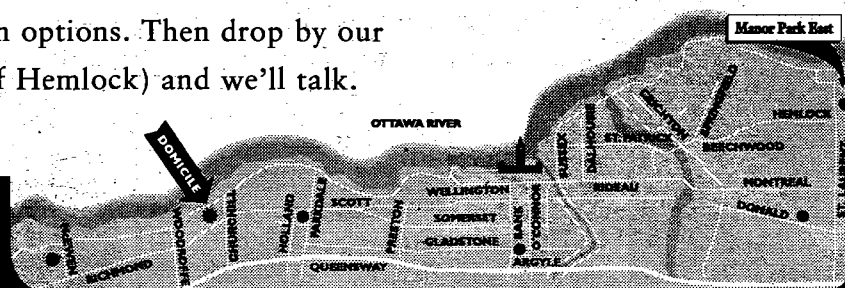
major renovation on that old house just to live in the city. Manor Park East is 102 new homes built in an established—and coveted—part of Ottawa. You'll fit right in.

Go to www.domicile.on.ca to see the phase 1 site plan and floor plan options. Then drop by our on-site sales office on Mart Circle (east off St. Laurent, just north of Hemlock) and we'll talk.

domicile

744-7888

Domicile New Home Sales & Design Centre
373A Richmond www.domicile.on.ca





Ottawa-Carleton District School Board Trustee Cynthia Bled Reports

I find myself constantly focusing on school closures these days. This is because although there are 12 zones in the OCDSB system, on Dec. 21 trustees are scheduled to vote on a staff recommendation to close four schools – all in our zone. And unless trustees support alternatives, the recommendation is that a 100% utilization capacity be applied to the zone.

Overbrook is one of the schools targeted for closure. The other three are in the Gloucester area. Of these, two are already utilized beyond 100% capacity. Built into the recommendation is expanded proliferation of portables in a compacted area. Parents here have been vocal in alerting trustees to potential negative implications of supporting the initial recommendation. As expressed by one parent writing to trustees: "I am aware that it is necessary to close schools, but in order to ensure continuity, fairness and equity in the school closure process, I would suggest that no schools be closed until the entire process has been completed for all Quadrants.... It would be a great tragedy for the community to find out a year from now that the bottom line of 100% capacity has been reduced and our schools, which would have remained open, are now closed and lost to the community." (bold in original)

At the request of a number of school councils, I presented a motion to the Board, requesting that the administration prepare a scenario showing the impact of a 90% loading factor on the zone in addition to the 100% recommended factor. The motion passed on a 7-to-2 vote. However, the 90% scenarios forthcoming as a result of this directive leave one puzzled. As one school council wrote, and I quote:

"On October 25 the Board requested scenarios to illustrate a 90% loading of schools for Quadrant C (i.e. zone 12).... Staff has responded by giving 2 scenarios with irrational loading of schools:

- In scenario B, staff relocates students from Queen Mary ES to Overbrook ES with a loading of 171.5% and 8 portables. [N.B. Overbrook has no space for even one more portable]; - In scenario A, staff relocates students from Robert Hopkins ES to LePhare with a loading of 125% and 6 portables.... A member of our school council presented more rational ways to balance utilization factors and avoid overcrowded schools and portables for one of these scenarios. Please contact us should you have any questions with that regard."

The request to the administration for a 90% scenario was a serious one. The Ottawa-Carleton Assembly of School Councils has itself now passed a motion that requests the Board to "...implement closures based on 90% of school capacity for each quadrant in the Phase 2 closures." "HELLO...Is anyone listening???" writes a parent as she closes her letter. "Dear Trustees:" she writes. "Yes. I know you've heard all of the reasons why four schools in Zone 12 should NOT be closed. Did you ever think that so many opponents to the closures might actually be correct in their thinking?"

The Board is preparing to survey parents of children in JK to Grade 3, as to their Middle Immersion intentions. Overbrook, a Middle Immersion center at this time, is on the slate of schools recommended for closure without regard to how the results of such a survey might impact on the demand for facilities.

While our zone might face decimation of its schools, a number of activities are of potential interest to parents:

Budget planning: Deliberations and consultations will begin the first week of February and end the last week of March;

French as a Second Language (Early, Middle and Late French Immersion and Core French): Information packages are being prepared to help parents choose a program; **District-Wide Exams**, being phased in for all secondary school students;

Education Quality and Assessment Office (EQAO): Grades 3 and 6 results in reading, writing and math were distributed to schools. Principals have been asked to keep the details confidential until they can be related to school profiles that will be available in January 2000;

Year 2003, when two cohorts of students graduate – youth now entering Grade 9 of the 4-year high school program, and the last classes of OAC students. The government is providing contingency funding for post-secondary institutions that will see a double intake of students from these classes.

Happy Holidays

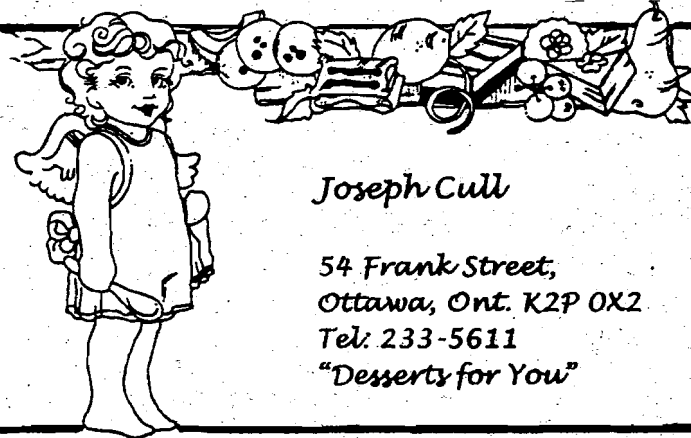
All the best for the New Year and New Millennium.

Your trustee Cynthia Bled,
OCDSB, 133 Greenbank Rd.
Nepean, K2H 6L3;
Tel. 749.9140 Fax. 749.8651;
cynthia_bled@ocdsb.edu.on.ca



activa physiotherapy clinic

200 Rideau Terrace, Suite 202
Ottawa, Ontario, K1M 0Z3
Tel. 744-4188 Fax 744-8879
Pamela Siekierski R.P.T. M.C.P.A.
Barbara Stefanska R.P.T. M.C.P.A.



Joseph Cull

54 Frank Street,
Ottawa, Ont. K2P 0X2
Tel: 233-5611
"Desserts for You"



DR. GERALD GLANTZ

FAMILY DENTISTRY
NEW PATIENTS WELCOME

741-1021

119 BEECHWOOD AVE. at Chapleau

DEDICATED & CARING STAFF

ON-TIME SCHEDULING

FREE PARKING



EDI

The
Edinburgh

THE EDINBURGH

"Established Excellence in Private
Client Care"

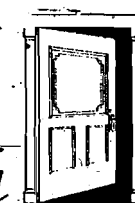
1. Elegant Residence
2. Prime Location
3. Excellent Reputation
4. Registered Nursing Coverage 24 Hours
5. Long Term, Short Term and Convalescent Services
6. Fine Dining
7. Chauffeur Service
8. Community Seniors' Meal Programme available

Mary Albota, RN, Administrator

747-2233

In the "Heart" of
New Edinburgh

The
Edinburgh



10 Vaughan St., Ottawa Beechwood Ave. & Vanier Parkway



CLAUDETTE BOYER

Députée d'Ottawa-Vanier
M.P.P. Ottawa-Vanier

Circonscription/Riding
237 chemin Montréal
237 Montreal Road
Vanier ON K1L 6C7
Tel: 744-4484
Téléc/Fax: 744-0889



Courriel/E-mail: claudette_boyer-mpp-co@ontla.ola.org

Your community
travel agency!

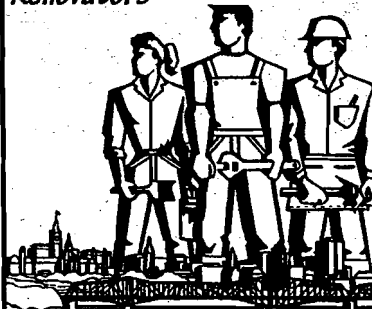
ALGONQUIN
TRAVEL

18 Beechwood Ave.

Vanier, Ontario

745-5522

THE
NEIGHBOURHOOD
SPECIALISTS
Renovators



Committed to Excellence
General Contractors

565-5223

Sandy Hill Construction
of Ottawa
www.sandy-hill.on.ca

A Surprise Connection with Early Crichton School



Robert Henry Eldon (1861-1945) and his wife Mary ("Minnie") Hannah (Mitchell) Eldon (1864-1915). They were married on January 2, 1888

By Donald Eldon

With its 125-year history, Crichton School ties into the lives of New Edinburgh community residents in unexpected ways, one instance being through my grandfather, Robert Henry Eldon. I knew that he had taught in Ottawa in the 1880's but I had no idea where. In our fifteen years in the community, my family and I have attended plays and other events in nearby Crichton School without ever sensing our connection with the early days of the school.

Nevertheless, a beautifully illuminated scroll, found among our family papers, began to provide a clue. The scroll, dated New Year's Day 1889, is addressed to Robert Henry Eldon from the boys and girls he taught "in the third class at the Public School of Rideau Ward Ottawa". The text mentions an "accompanying souvenir as a slight token of the love and respect we have for you as our teacher".

In the City of Ottawa Archives I confirmed that Rideau Ward Public School, also known as the New Edinburgh Ward School, in 1888-89 was located at 200 Creighton (now Crichton) Street, the present location of Crichton School. The school then had only four classrooms with four teachers, including

Robert H. Eldon and John McJanet, Headmaster. The school building was built in 1875. Following the annexation in 1887 of the village of New Edinburgh to the City of Ottawa, the school was part of the Ottawa education system. At that time big wood stoves heated the classrooms, hardwood was piled in the hall, and pupils wrote on slates with squeaky pencils. In July 1887 the Ottawa Board provided for the newly annexed school to have the customary sheds, platforms and fences.

It was to Ottawa and to this school that my grandfather came at the age of 27 with his bride, Minnie. They lived at 40 King Street (now King Edward Avenue) near Boteler Street.

My grandfather was not long at the school when the scroll was presented to him by his pupils. The scroll was prepared by Emily Thomas, a skilled calligrapher. It is signed on behalf of the class by eight students, including Mark T. Thomas (related to Emily?) and Ethel Hanington (likely a daughter of Canon Hanington, long-time rector of St. Bartholomew's Church). The text of the scroll concludes: "Hoping that you may have a happy and prosperous life and may long be spared to continue your

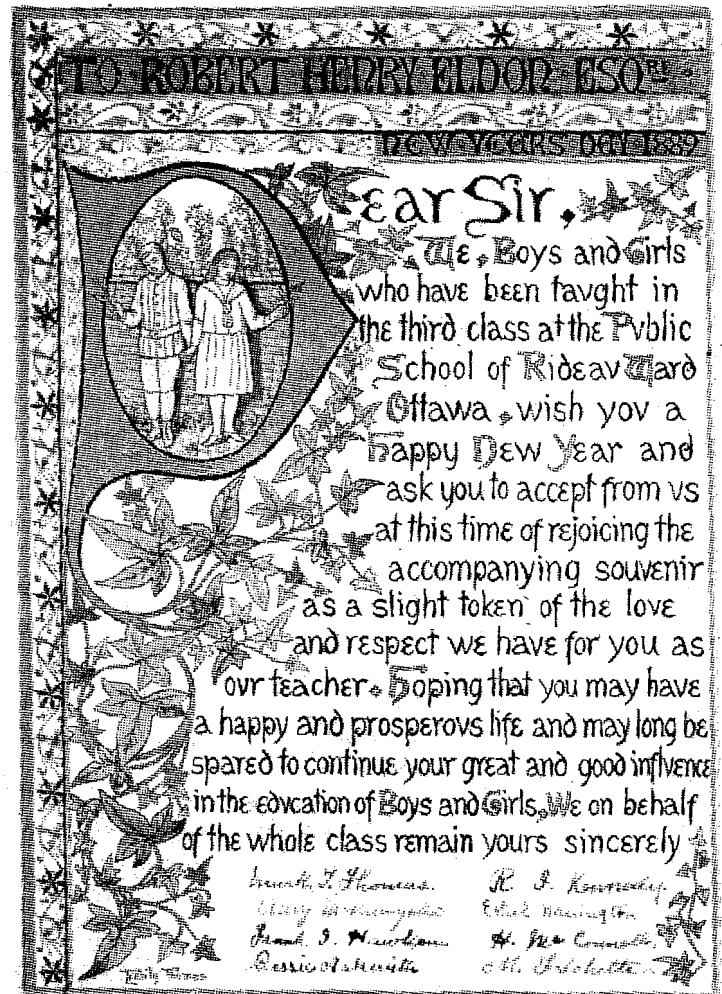
great and good influence in the education of Boys and Girls".

This wish was fulfilled, though Robert H. Eldon did not long remain at the ancestor of Crichton School. He was a young man on the move. The 1889-90 Ottawa City Directory records him as a teacher at the Central School West on Kent Street between Slater and Maria. He also had moved to a home in New Edinburgh - at 52 Victoria Street, now a vacant lot on the southwest corner of River Lane.

After leaving Ottawa, Robert Eldon began a 35-year teaching career in Toronto where he was the founding principal of the Central High School of Commerce from 1911 to 1926. In his early years as a teacher he also studied extramurally for his Bachelor of Arts degree which was awarded by Queen's University. He received many honours for his work in commercial education, including a much larger illuminated scroll from the Toronto Board of Education which described him as the "Father of com-

mercial education in Toronto" and the Silver Jubilee Medal from King George V. Yet Robert Eldon clearly treasured

- maybe most of all - the early tribute from his students in New Edinburgh which I found in pristine condition.



Scroll presented to Robert Henry Eldon in 1889 by his students at Crichton School

For Anne Chabot-Smith

The future begins today



With her daily homework already behind her, Anne forges ahead with her research project: "Les voyages de Magellan." Anne is one of fifty students enrolled at Macdonald-Cartier Academy.

An entrance examination is administered on an individual basis.

Applications are now being accepted for the 2000 - 2001 school year

For further information, please contact:

Jean Mantha, Headmaster
Macdonald-Cartier Academy
270 Crichton Street, Ottawa, Ontario K1M 1W4

Tel.: (613) 744-8898

Macdonald-Cartier Academy

A private, co-educational junior high school (grades 7-8-9) located in New Edinburgh

A stimulating, full French immersion programme

A low teacher/student ratio (one to ten) ensuring high academic standards and personalized attention

A full range of sports, cultural activities, outdoor and experiential education, social and recreational events.

Travail - Respect - Fierte



City of
Ville d'Ottawa

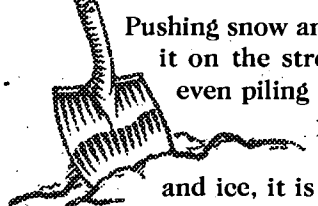
Information

www.city.ottawa.on.ca

www.ville.ottawa.on.ca

KEEP STREETS AND SIDEWALKS FREE OF SNOW AND ICE

**SNOW AND ICE FROM YOUR PROPERTY
MUST STAY ON YOUR PROPERTY**



Pushing snow and ice to the end of your property and spreading it on the street, or pushing the snow across the street, or even piling the snow onto snow banks created by roadway plowing, is prohibited. If your property does not provide for storage space of excess snow and ice, it is your responsibility to arrange for removal and appropriate disposal.

Ottawa's Streets By-law prohibits the depositing of snow and or ice from private property onto streets and sidewalks. Plowing contractors and property owners are subject to a fine of \$125 for failure to comply with the by-law.

Info. and complaint registration (24 hours): 244-5444.

PAS DE NEIGE NI DE GLACE DANS LES RUES ET SUR LES TROTTOIRS

**LA NEIGE ET LA GLACE ACCUMULÉES SUR VOTRE
PROPRIÉTÉ DOIVENT DEMEURER SUR VOTRE PROPRIÉTÉ.**

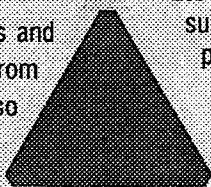
Il est interdit d'amener la neige et la glace jusqu'en bordure de votre terrain et de l'étendre ensuite dans la rue ou encore de pousser la neige jusque de l'autre côté de la rue ou même de l'empiler sur les amoncellements créés par le passage des chasse-neige. Si vous n'avez pas d'endroit où accumuler l'excès de neige et de glace sur votre terrain, vous devez vous occuper de le faire enlever et éliminer de façon appropriée.

Selon la réglementation de la Ville d'Ottawa, il est interdit de déverser dans les rues et sur les trottoirs la neige et la glace provenant des propriétés privées. Les entrepreneurs en déneigement et les propriétaires qui ne se conforment pas à cette réglementation s'exposent à une amende de 125 \$.

Renseignements et dépôt de plaintes (24 heures sur 24) : 244-5444.

DON'T WALK ON NEWLY-FROZEN WATERWAYS

Ottawa Fire Services reminds you that walking onto newly frozen rivers and lakes is dangerous. Due to water currents and the effects of warm water from industrial discharges, the thickness of the ice can vary daily. It is also important not to allow pets onto the ice either, as the majority of ice-related drownings occur when pet owners place themselves in jeopardy to rescue a pet that has fallen through thin ice. If you see someone who has fallen through the ice, dial 9-1-1. Ottawa Fire Services will respond immediately with proper training and equipment to conduct a safe rescue.



NE VOUS AVENTUREZ PAS SUR LES COURS D'EAU QUI VIENNENT DE GELER

Les Services d'incendie d'Ottawa vous rappellent qu'il est dangereux de marcher sur les lacs et rivières lorsque ceux-ci viennent de geler. L'épaisseur de la glace peut en effet varier d'une journée à une autre, en raison des courants ou de la présence d'eau plus chaude provenant des rejets industriels. Il importe également de ne pas laisser les animaux familiers se promener sur la glace, étant donné que la plupart des noyades surviennent lorsque des propriétaires d'animaux compromettent leur sécurité afin de secourir un animal sous le poids duquel la glace a cédé. Si vous apercevez une personne qui s'est enfoncée sous la glace, composez le 9-1-1. Les Services d'incendie d'Ottawa, dont le personnel possède la formation et l'équipement nécessaire pour procéder à une opération de sauvetage en toute sécurité, interviendront immédiatement.

Congratulations to the following individuals and groups who received the 1999 Community Pride Achievement Award for their volunteer clean-up and beautification efforts in the City of Ottawa:

Anita Mellow*, Barbara Gladish*, Regina Community and Recreation Association, Regina Public School, Marc and Guylaine Ouimet, Edward Browell, Betty-Ann Descarie, Alexandra Bédard, Maria Polito, Arlene Moke, Plant Pool Recreation Association, Chinese Christian Art School, Vietnamese Commemorative Monument Association, Westboro Beach Community Association, Georges Langlois, Carolyn Gauthier, Donna Silver*, Joyce Wright*, Faircrest Heights Community Association, Adrian Nelson.

* Indicates that the recipient received the Community Pride Leadership Award

**Community Pride
ACHIEVEMENT AWARDS**

Info: 244-5300, ext. 3363 or visit our web site

Félicitations aux personnes et groupes ci-après, qui ont reçu le Prix du mérite civique 1999 pour avoir bénévolement contribué au nettoyage et à l'embellissement d'Ottawa :

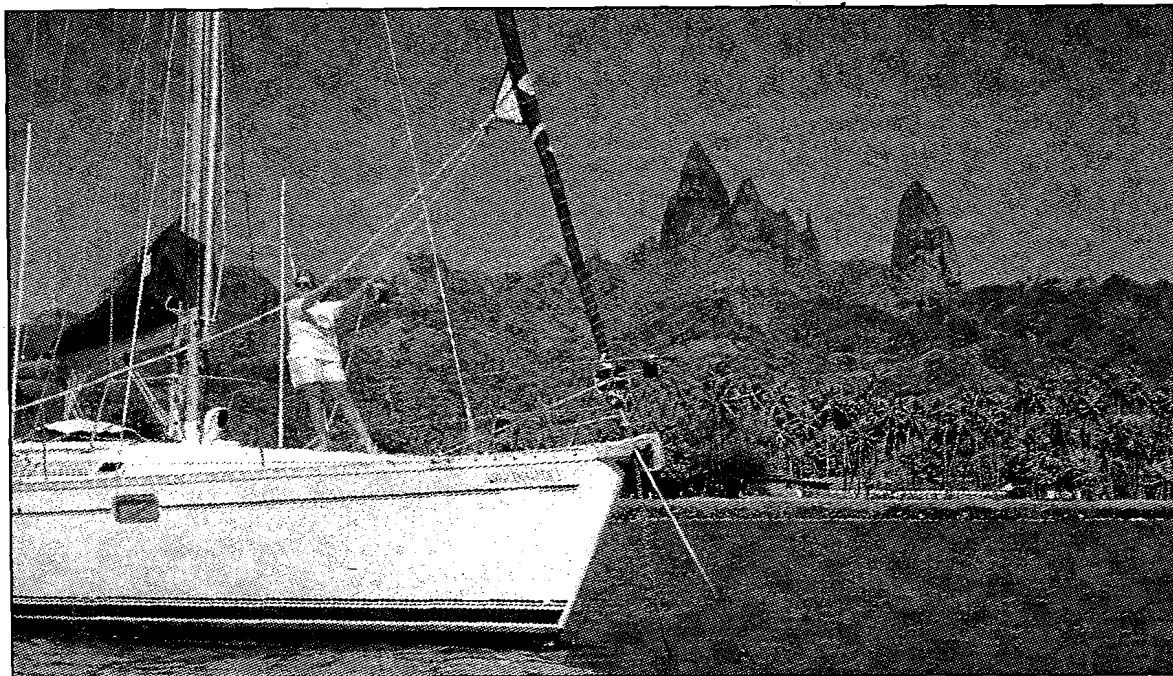
Anita Mellow*, Barbara Gladish*, association communautaire et récréative Regina, école publique Regina, Marc et Guylaine Ouimet, Edward Browell, Betty-Ann Descarie, Alexandra Bédard, Maria Polito, Arlene Moke, association récréative de la piscine Plant, école d'arts chrétienne chinoise, association du monument commémoratif vietnamien, association communautaire de la plage de Westboro, Georges Langlois, Carolyn Gauthier, Donna Silver*, Joyce Wright*, association communautaire de Faircrest Heights, Adrian Nelson.

* Personnes ayant reçu le Prix de leadership du Programme de fierté civique.

**LE PROGRAMME DES PRIX DE
mérite civique**

Renseignements : 244-5300, poste 3363, ou visitez notre site Web.

Blame it on Gaughin!



By Heather Bacon

French Polynesia/Calabogie

For many people TAHITI is a magical symbol: the Dream that spurs them onward. In fact we have met several people who pushed through to Papeete despite great odds, in order to realize that dream. Blame it on Gauguin. Artists, poets, novelists romanticized this land. Inspired by near perfect climate, exotic scenery and uninhibited nymphets they came and stayed.

In fact, the island of Tahiti is only one of the Society Islands; a group that includes Raiatea, Moorea, Huahine, Borā-Bora and Tahaa. It is a part of the larger area known as French Polynesia. Before arriving in these islands we visited the Marquesas and the Tuamotus, lesser known, more idyllic.

Our first landfall, after a 3 week passage, was FATU HIVA. The sight was spectacular. High basalt pinnacles soar dramatically skyward. Thor Heyerdahl of Kon-Tiki

fame made this spectacular though turbulent anchorage a "must" for cruisers.

Continuing my retired teacher persona I nabbed a group of small children to listen to a story. Can you believe: sitting under a palm tree in Polynesia reading *Thomas' Snowsuit* in French?! The kids were rolling on the ground with laughter. I must tell Robert Munsch that his humour is universal!

The island of Ua Pou in the Marquesas was such a positive experience that we shall ever cite it as one of our warmest Polynesian memories. We arrived on a Sunday, without local currency. I met a woman who ran a restaurant, spoke to her at leisure and told her it was our 35th (!!!) anniversary. She felt that we should celebrate. Annette told us she would prepare a Marquesan meal: we could pay later, and she lent us local money to shop (equivalent to US\$100: things aren't cheap here!). The meal ranked among the best

we've had and she commended her grandson and his buddies to dance a truly professional performance for us. Later we met Annette's niece, when we stumbled upon a home by accident in search of a "B and B". Hugh saw a washing machine. He asked if they did laundry. They said, 'YES, BUT NO MONEY' and we were in that embarrassing and euphoric situation where people WANT to do you a favour, out of the goodness of their hearts. We did give gifts. They told us to bring more dirty clothes, and "No gifts". We learned that Landon Jones, the husband, was a recorded singer and borrowed his CD to play on the boat. In Papeete a small load of laundry cost \$45. We genuinely appreciate the kindness of this Marquesan couple. We stayed a week in Ua Pou, and it was the highlight of our travels to date. We took an island tour with a Frenchman "gone native." ("Il est plus sauvage que les marquisiens," said the Belgian

Are you taking a vacation? Your pet deserves one too!

PLACE for PAWS

Boarding "Camp" for Dogs & Cats

- 5-star accommodation on tranquil farm
- sunny windows in private catery
- large individual covered runs
- 1-acre fenced exercise yard
- daily country-trail walks
- pick-up and delivery service
- 25 minutes from New Edinburgh
- references from *your* neighbourhood

Margo Edwards Ledoux (613) 446-2280



EPICURIA

Enjoy the Season's Bounty

EPICURIA (the new name of Ryley MacLachlan) invites you to enjoy the best our region has to offer with our specialty take home foods.

Our Winter menu includes:

- Daily muffins, scones, sandwiches and wraps,
- Winter soups and grain salads
- Vinaigrettes and organic greens
- Comforting main courses and healthy side dishes
- Savoury snacks and assorted breads
- Cookies, biscotti, and squares
- Seasonal tarts, pies, crumbles, and of course your favourite cakes
- Christmas baked goods for giving
- Vegetarian dishes

We also carry a variety of quality packaged products for your pantry, including:

- Italian olive oil, flavoured vinegars and oils, exotic spices,
- unique chutneys and relishes and premium dried pastas

And for your special needs we offer:

- Weekly menus for home and entertaining
- Corporate & Cocktail Menus
- Holiday Entertaining Menus

EPICURIA FINE FOODS 419 MACKAY STREET, OTTAWA
tel (613) 745-7356 web www.rymac.com e-mail chef@rymac.com

NESBITT PROPERTY MANAGEMENT

~ PROFESSIONAL RESIDENTIAL MANAGEMENT SERVICES ~

- Diplomatic and Executive Community
- Serving Rockcliffe, New Edinburgh & Sandy Hill
- Established Reputable Local Firm

99 Fifth Ave., Suite 240
Ottawa, K1S 5P5

Tel (613) 744-8719
Fax (613) 230-8357

e-mail david_nesbitt@ocdsb.edu.on.ca



BIRDERS CORNER
NATURE STORE

WILD BIRD FEEDING SPECIALISTS

Hours:

Mon. to Wed., 10 a.m. - 5 p.m.
Thursday, 10 a.m. - 6 p.m.
Friday, 10 a.m. - 8 p.m.
Saturday, 9 a.m. - 5 p.m.
Sunday, noon - 5 p.m.

Corner of Beechwood Ave.
and Vanier Parkway

741-0945

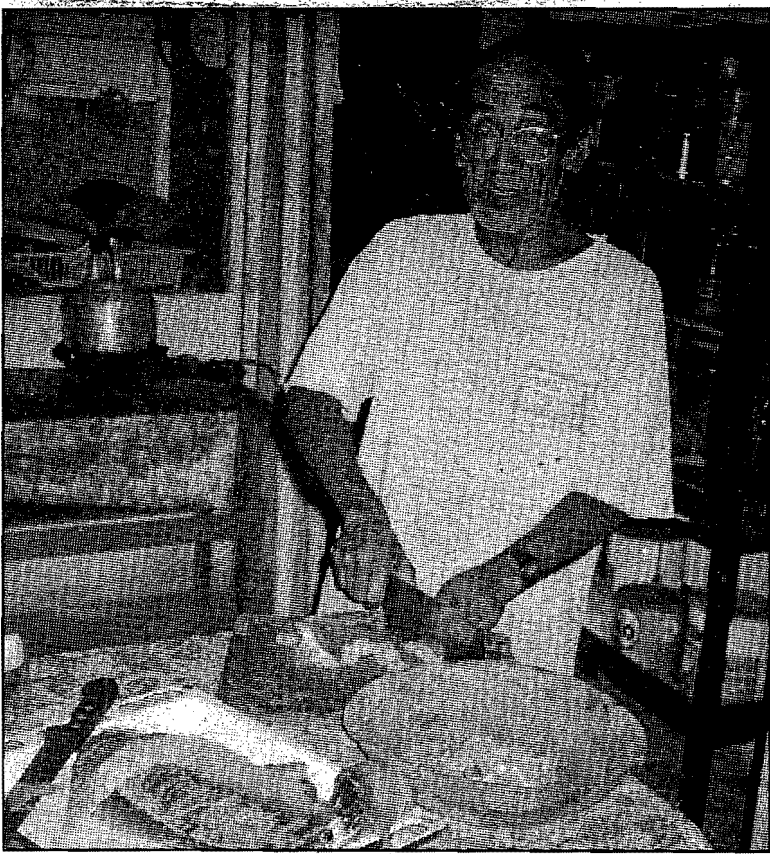
Entering the
Millennium naturally!

West Wind Flutes

Peggy Rath

Teaching
Chamber musician
Repair work
Sheet Music

168 Goulburn Ave., Ottawa ON K1N 8E2
Tel: (613) 230-1404 Fax: (613) 233-7328
E-mail westwindflutes@rayn.com



yachty with whom we travelled.) We lunched in a village famed for its dancers. Later we were to marvel at their talents as they performed in town. Once again, we ate magnificently: the ubiquitous *poisson cru*: tuna marinated in coconut milk, fried chicken, barbecued fish, "Chateau de Carton" acceptable box wine, and fresh fruit. We gently turned down *FARFALU*. As we understand it, fish is marinated in salt water for some time. The fish is thrown away and the marinade is used to soak fresh fish. The smell is particular. One keen soul requested it. When we hit town he left the vehicle and his girlfriend peremptorily and was not seen again!

Annette had planned a Dance Evening and we felt obligated to stay. She put on a dinner in her restaurant and dancers from the village we had visited performed. They were fantastic! Costumes and floral headdresses were exquisite. A male dance master, a sort of "cheerleader" darted among them inspiring high spirits, laughter and dynamic interaction with the audience.

In contrast to the Marquesas and the Society Islands the Tuamotus are flat coral atolls, sometimes hardly visible in the distance and surrounded by dangerous coral reefs. Underwater life is prolific and

the passes are favourite haunts of large sharks. We did another overnight passage to Fakarava South. Entering the pass through the barrier reef, we thought we risked going aground. The water was like glass. We saw coral and fish twenty feet below. When we dropped the dinghy in the still water we did not realize it had touched the surface, so clear was the water. Colours of aqua and turquoise were exquisite. I snorkelled right off our boat and closer to shore where every coral *bommie* had its particular denizens. On shore I met Timi, a grandfather who has retired to this remote atoll. (He was a teacher in his former life!) He enlisted his grandchildren and teenage friends to barbecue fish kebabs on the beach. The table was covered in colourful batik cotton decorated with a multitude of the fragrant tropical flowers so abundant in the islands. Once again we dined magnificently. We had to leave Fakarava South when the wind changed and we seemed dangerously close to a high commie. I felt that we might never again be in such a beautiful and unique spot.

On the island of Tahiti we went through obligatory paperwork, succumbed to the temptations of a Gallic supermarket and arranged flights to Canada. But the island of Moorea beckoned, a few scant

hours away. Finally we pulled up anchor and made the four hour crossing. On the way we saw a French navy ship firing practice flares. Suddenly there was a splash quite close to our boat and I thought they had overshot. Then we saw another splash and a huge silver shape leapt out of the water. It was a whale! It breached, it showed its flukes, it blew...we were ecstatic. The last definite whale sighting we saw was on our passage from the Galapagos to the Marquesas, just off the coast of Isabella. That was exciting, and a little frightening in retrospect, because it was pretty close and you imagine the consequences of hitting one. But we are told that whale sightings are common in this stretch; it is a regular route! It looked like an Orca to me, and some locals call it "false Killer Whale". My dive-master said it was a Humpback and indeed we heard a whale sounding when I was diving off Moorea. Well, actually I didn't hear it; I was too busy listening to my bubbles. I did wonder why the divemaster kept making strange twirling motions above his head. PADI didn't teach me those signals!

Yes, I dove in Moorea and, despite my reservations, I did go on the Shark-feeding special. (And yes, I bought the video!) Here's what happens: divers descend and obediently position themselves on the bottom. The divemaster descends carrying a large dead tuna in a plastic bag. He is immediately surrounded by hundreds of brightly coloured little fish. But on the periphery circling ever closer are the black-tipped reef sharks. They are only two or three feet long, you don't have to worry! As sharks home in, smaller fish part ranks and leave lunch to the stronger and meaner. This lasts for at least fifteen minutes. Would you ever have

Rent-A-Wife Household Organizers

"Every working person needs a wife!"

- * Regular & Occasional cleaning
- * Pre & Post move cleaning and packing
- * Pre & Post renovation cleaning
- * Blitz & Spring cleaning
- * Organizing cupboards, basements...
- * Perhaps a waitress???

Laurel 749-2249

A Touch of Class Fashion Gallery

Ladies' Wear for All Occasions
Dresses, Suits, Accessories

We specialize in: • Wedding Parties
• Church Dresses • Prom Dresses
for Graduations • Light Alterations

46 Murray St., Ottawa Tel: 244-0044

MONSON DELUXE CLEANERS

WE ARE A

CLEANER

DRY CLEANER

- ✓ We care about the environment and operate our business in a safe and efficient manner.
- ✓ We use the best available equipment and technology to reduce any chemical released into the air, water or ground.
- ✓ We train our employees and practice proper procedures and precautions to ensure safety in our operations.
- ✓ We are members of professional associations that keep us up-to-date with the latest technical and safety information.
- ✓ We dispose of our chemical waste legally through a licensed waste removal service.
- ✓ We are working with governments on the federal, provincial and municipal levels and surpass all required environmental regulations.
- ✓ We are proud to be a part of the community and respect our customers' and our neighbors' right to a safe and clean environment.
- ✓ We strive to be good neighbors and recognize our responsibility to the community we work and live in.

YOUR NEIGHBOURHOOD
DRY CLEANER

WE CARE ABOUT YOU
AS WELL AS YOUR CLOTHES

SPECIALISTS IN SUEDE CLEANING
AND FRENCH CLEANING

110 Beechwood (at St. Charles)
749-5969

Louise Daley

136 College Circle
Ottawa, Ontario

741-7894

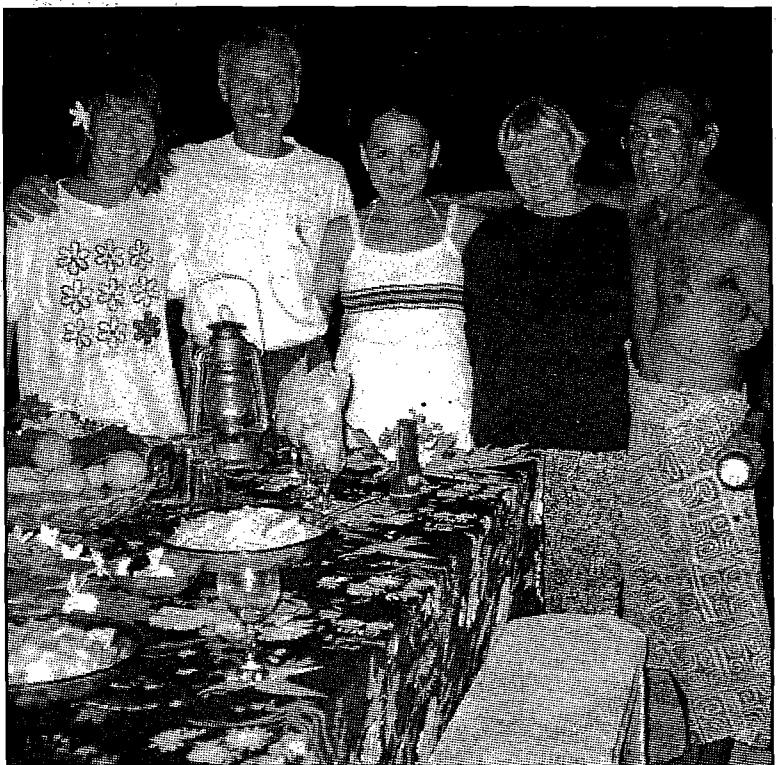
House calls on request



Family Resource Services Care of the Elderly at Home

Elizabeth Dale-Harris
RN, BScN

23 Rideau Terrace
745-5950



believed that one can get very used to the presence of sharks? It was fascinating and no one was apprehensive. Something gave me a little butt but it was a smaller creature. Towards the end, however, the big ones begin to cruise in. The last remaining tail portion was seized by a large lemon shark, who cruised off to enjoy it at his leisure. The divers drifted off in crystal clear water to examine Moray eels, lionfish, anemone and clownfish and all the colourful little fish of the reef. It was wonderful and I am really glad I did the dive.

Anchored in Cook's Bay we looked out daily at one of the most beautiful vistas in the world. Remember *South Pacific*? The sacred mountain we saw is Bali Hai! The last version of *Mutiny on the Bounty* was shot mainly in the adjoining Bay Opunohu. We shopped and lunched, saw still more dance performances with delightfully enthusiastic and graceful young people, met some international travellers, some on megayachts and some on 747's, forged warm friendships with yachties, hiked a bit

and swam a bit and built up still more positive memories of Polynesia.

ARGONAUTA I is now "on the hard again," waiting out the cyclone season in Raiatea. We are back 'home' catching up on friends and culture. As always I revel in getting back in touch. It is a joy to be still remembered in New Edinburgh, although my beloved Crichton is no more. A return after absence often brings to your attention things you took for granted. It is clean, efficient, comfortable here. However, I notice we have a lot of rules: regulations about smoking, garbage, dogs... To my dismay I learned that a close friend needs radiation following a lumpectomy. She has waited five months in Toronto because she refuses to go to Buffalo. In French Polynesia all groceries except for bread, butter and a few staples are exorbitantly priced. But I would pay no income tax and have cradle to grave health care, medications included. How does one compare apples to oranges?

Friends of Crichton

By Carol Reesor

Since the last edition, a number of meetings have been held in an attempt to seek guidance and support to save Crichton School. Chris Jarrett, Terhi Robertson and I met with representatives of the Ottawa-Carleton District School Board in October. It is clear that, although a decision has not been reached on the fate of our school, selling it off through Ontario Realty Corporation is the Board's ultimate goal.

We want to save the school. To that end, financial commitments and a fully developed game plan are essential. It is our hope that with the wonderful victory achieved by NECA in permanently disposing of the idiotic threat to pave over Stanley Park, some effort and energy could be directed towards setting up a sub-committee to investigate the realistic use of Crichton School.

As we explained in the last edition of the NEN, we see a multi-use mix, including a seniors' foot clinic, wellness and massage therapy, music and art classes, theatre groups and a computer centre.

There is the possibility of federal support through the Millennium Fund. Since Crichton is designated a Heritage Building we would qualify. BUT...

We need your help and encouragement. We all agree that we need a central place to meet and greet, indoors. Give us a call and your name. We promise efficient use of your time.

We have to have HEART: Health, Education, Arts, Recreation and Theatre. These are the components into which you may see Crichton School transformed.

So please call me at 741-5656 (fax: 741-3357) for Friends of Crichton. E-mail: artliaison@sympatico.ca



We get lots of thank you letters.

Sylvan Learning Centre® gives your child individualized help in reading, writing and math. To learn more, Call Sylvan® today.

5303 Canotek Road, Suite #2
Gloucester K1J 9M2



PHONE 745-8391



Introducing our new team at Beechwood Animal Hospital

Investing in people for people

Expanding to improve patient care and customer service.

Dr. David O'Meara



12 Yrs Small Animal Experience
(O.U.C '87)
French Bilingual Certificate
Learning Spanish

Now 2 Vets
Open Longer
More Staffing
Bilingual

Tina (Veterinary Technician)



Veterinary Technician Diploma
Bilingual (French)

Dr. Karine Gendron



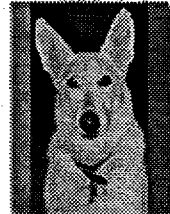
6 Yrs Small Animal Experience
Fluently Bilingual (French)
(University of Montreal '93)

Companion Animal

Medicine
Surgery
Dentistry
Behavior

Dogs, Cats,
Rabbits + Ferrets

Abbie



11 yrs Animal Welfare Advocate
3 yrs Quality Control Inspector
Proficient Guard Dog And
Accounts Receivable officer

Chantale



9yrs Customer service experience
2yrs Social Work (La Cité)
2.5 Yrs Employed in a Pet Shop
Bilingual (French)

Katherine



Diploma "Lan Administration"
Diploma in "Office Administration"
Bilingual

Brenna



2yrs in Para Medical Health
as a companion Aid.
Volunteer Work at Shepherds of Good Hope
Bilingual

New Edinburgh Pharmacy

35 Beechwood Ave.

In the New Edinburgh Sq.
Building

TEL: 749-4444

FAX: 741-1866

Guardian

Delivery Service

Monday - Friday — 8:30 a.m. - 8:30 p.m.

Saturday — 8:30 a.m. - 6:00 p.m.

GET TO KNOW YOUR GUARDIAN
PHARMACISTS:

Frank Tonon B.Sc. Phm.

With change comes both risk and opportunity

If you think
strong communities and
effective government
are important, we want
to hear from you.

748-4141



Get the facts. Get involved.
Make your voice heard!



The Tri-City Partnership is changing the future of government in our region.

Tri-City reflects the newest thinking by urban experts on how to build better cities. It benefits from the experience of other cities such as Winnipeg, where amalgamation severed community roots, and Halifax, where amalgamation costs far exceeded expectations.

TRI-CITY DOES THIS:

- Creates three vibrant cities and eliminates Regional government
- Welcomes rural townships to join or purchase services if they choose
- Saves \$35 million net every year and maintains current levels of service
- Promotes a healthy business climate
- Cuts politicians from 84 to 27

LIVE LOCALLY – PROMOTE GLOBALLY

- Strengthens and supports communities
- Responds best to culture, recreation, environment and security needs
- Sustains high quality of life for residents and businesses
- Values community diversity and involvement
- Supports and restores Ottawa's core
- Markets Ottawa as a business and technology centre
- Sets a high priority on economic development
- Coordinates global planning and development strategies

Seize the opportunity for change! Call or write your MPP

Glen Shortliffe, Special Adviser
Tel: 225-6776 ext 2223 Fax: 225-0319 or E-mail:
glen.shortliffe@mah.gov.on.ca

Brian Coburn, Carleton Gloucester
Tel: 834-8679 Fax: 834-7647 or E-mail: brian_coburn@ontla.ola.org

John Baird, Nepean-Carleton
Tel: 828-2020 Fax: 828-6962 or E-mail: mailbox@johnbaird.com

Richard Patten, Ottawa Centre
Tel: 722-6414 Fax: 722-6703 or E-mail: richard_patten-mpp@ontla.ola.org

Dalton McGuinty, Ottawa South
Tel: 736-9573 Fax: 736-7374 or E-mail: dalton_mcguinty-mpp@ontla.ola.org

Claudette Boyer, Ottawa Vanier
Tel: 744-4484 Fax: 744-0889 or E-mail: claudette_boyer@ontla.ola.org

Garry Guzzo, Ottawa West - Nepean
Tel: 727-2657 Fax: 224-3306 or E-mail: garry_guzzo@ontla.ola.org

Norm Sterling, Lanark Carleton
Tel: 253-1171 Fax: 253-1175 or E-mail: norm_sterling@ontla.ola.org

Jean-Marc Lalonde, Glengarry-Prescott-Russell
Tel: 446-4010 Fax: 446-6605 E-mail: jean-marc_lalonde-mpp@ontla.ola.org



www.city.gloucester.on.ca

BURGH BUSINESS BRIEFS



Faith Stiles of Grabbajabba with helpers Katie Bélanger (l) and Chrissie Shires (r).

Photo: Peter Glasgow

By Jane Heintzman

In this final Burgh Business Brief of 1999, and last before the much heralded Year 2000, we would like to thank all of our advertisers for their ongoing support of the paper and of the community. Thanks to their participation, we have been able to keep residents of the Burgh and its environs as fully informed as possible about current events in the community as well as its history, its development and its many "personalities". Best wishes to all our advertisers for a joyful holiday season and a happy, healthy and glitch-free Year 2000.

We wish a fond farewell to Faith Stiles and her son Todd who left Grabbajabba in late November. For several years, the Stiles have been a familiar and welcoming presence at the Beechwood/Mackay corner and they will be greatly missed by the many regular patrons of Grabbajabba. Faith will be especially remembered for her kindness and concern through the long cold days of the Ice Storm of 1998, when Grabbajabba's hot soup, sandwiches and coffee saved the day for many a chilly Burgh resident. Best of luck in

your new endeavours, Faith, and please remember to keep in touch with your friends on Beechwood.

A very belated welcome to Elly Saidi who took over in June as Managing Optician at New Edinburgh Optical following Jason Veitch's departure. Elly is already full of enthusiasm about the charms of the Burgh and the (now legendary!) friendliness of its inhabitants.



Elly Saidi of New Edinburgh Optical Photo: Peter Glasgow

Like the rest of us (but probably more efficiently), Kim and Beth and their team at Bread and Roses are gearing up for the Christmas season and preparing to wrench us from our dietary resolutions with their tempting holiday fare. This will include their traditional fruit cakes—both glossy jewel cakes and a wheat-free, vegan version; plum puddings and brandy butter; Scottish shortbread; ginger cookies in the traditional Christmas shapes; sugar cookies and an assortment of other cookies; cranberry loaf cakes and mock mince pies and tarts. Last but by no means least, Bread and Roses will offer a fulsome supply of its popular line of home-baked dog biscuits for the four-legged members of the family. (Perhaps it will help them forget the new leash laws..)

Kim reports that the bakery's plans for the year 2000 include a continuing move towards the use of all organic ingredients, as well as an ongoing focus on baked goods for special diets. Kim's own personal plans involve a break for maternity leave early in January, and we send her our very best wishes.

Place for Paws boarding camp for cats and dogs is looking forward to a busy and lively holiday season. If they are planning to hang Christmas stockings for their furry residents, perhaps they should give Bread and Roses a call and load up with home-baked dog cookies—the perfect stocking stuffer!

Griffin-Kennedy Interiors is also in the holiday mode, and Adelynn reports that most of what glitters—in the ornament category at least—really is gold this Christmas. The store's wonderful gift selection, much of which is in the modest \$20 to \$30 range, includes decorative topiaries; candles; picture frames; vases; trays; painted furniture; wall sconces; twig angels and ornaments galore, from gold apples and pears to gold birds. Griffin-Kennedy has a special reason to celebrate this Christmas as partner Susan Kennedy gave birth to a daughter, Kaelyn Swan Kennedy, on October 5, 1999. Kaelyn is already a regular visitor to the store where an array of stuffed animals is ready to receive her. Congratulations Susan, and many thanks for allowing us to introduce Kaelyn (photographically at least) to our community.

As always at this time of



Kaelyn Swan Kennedy Photo: Peter Glasgow

year, Birders Corners is overflowing with intriguing and colourful Christmas gifts. This year, owner Lynn Smyth's crowning glory is her full array of handmade Yukon parkas, the world's warmest and arguably most distinctive winter coat. For the kids on your list, Lynn is once again recommending a book from her attractive new collection of nature-related reading material, and a beanie baby. As of December 1, 1999, the existing crop of beanie babies will be officially retired to make way for the new millenium generation coming in January, so the little critters will have added value as collectors' items. Lynn reports that a particular favourite at the moment is a black bear with a gold bow tie appropriately (if rather ominously) named "The End." And yes, his successor, "The Beginning," will be on the shelves in January 2000.

Among the many other gift possibilities at Birders Corner this season are stone and iron sculptures; stone vases; Tamarack geese from Moosonee; night shirts; decorator bird houses; candles; new winter bird feeders; a singing bird clock with authentic Cornell University-approved ornithological sounds; lacquered papier-mâché bird ornaments and (for the bird that has everything?) heated bird baths. To mark the season and the new year in an especially colourful and decorative way, Lynn is also featuring fade-resistant flags for Christmas and the new Millenium.

Jolicoeur Hardware is fully stocked with the necessities for coping with possible Y2K or weather-related misadventures, including flashlights; oil lamps; battery-powered radios; booster cables and fireplace

ESSO

KAVANAUGH'S ESSO
SERVICE CENTER

RUPERT KAVANAUGH
Manager

222 Beechwood Ave. Vanier, Ontario. K1L 8A7 (613) 746-0744



**EVEREST
RESTORATION
(OTTAWA) LTD.**
Specialists in Building Restoration

Gary Gibson

Consultation on Commercial Restoration
Call: (613) 745-8502

- tuckpointing
- chimney repairs
- weather proofing
- masonry cleaning
- brick replacement
- structural repairs
- concrete repairs
- foundations

Nancy Benson & **Elaine Beaudry**
Sales Associate Bilingual Sales Associate

[IT'S YOUR MOVE!]

We have buyers looking in your neighbourhood now.
Are you ready to list with the best?

www.nancybenson.com

Telephone [613] 236-9551
E-mail nancybensn@aol.com

**COLDWELL
BANKER**

**Rhodes
& Company**



Lynn Smyth of Birders Corner Photo: Peter Glasgow

accessories. For the Burgh resident who has everything and doesn't wish to be reminded of winter or Y2K, Jolicoeur's Christmas items include cordless spill busters; telephones and a fancy multiple screw-driver set.

The NEN is delighted to welcome a timely new arrival among our advertisers: **Charlie Bagg's Gift Creations** is the handiwork of the Burgh's own Lissa Charlton of Keefer Street and her partner Debbie Bagg. Both Lissa and Debbie have had long experience in the health care management field, most recently as nursing directors at the Riverside Hospital. After hospital amalgamation, they opted to try an entirely new venture as corporate gift experts, specializing in the creation of gifts baskets individually tailored to recognize the contributions of employees, customers and colleagues. Their baskets cover the gamut of interests,

whims and delicacies from specialty gourmet foods (including complete dinners with, for example, an Italian or Thai theme), to picnics; specialty coffees and teas; golfing paraphernalia (this basket includes an ice pack!); gardening accessories; beautifying items; and baby gifts. Lissa and Debbie are happy to prepare the baskets precisely to your specifications, but if you are short on inspiration and/or time, their creative talents will take over. Needless to say, while their primary market involves corporate clients, Charlie Bagg's will gladly serve individual customers and could just be the extra pair of hands (and feet - they deliver!) you are looking for this Christmas. You can explore their gift ideas and price ranges as well as order on line through their new website: www.charliebagg's.com.

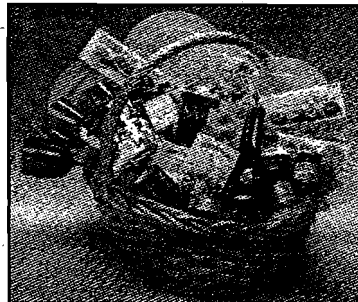
Partly thanks to the support of

NEW EDINBURGH NEWS

her daughters Sara and Caitlin, who ably assisted at a recent open house for Charlie Bagg's, Lissa reports that the new business is off to a great start and we wish her every success in the new year. (I wonder if their repertoire includes a Y2K basket?)

Welcome to David Ryan and his colleagues at **The Co-operators** who have recently moved into the new office complex at Beechwood and Marier (186 Beechwood). The Co-operators General Insurance Company is among the largest general insurance companies in Canada, with 15 offices in the Ottawa-Carleton region. Beechwood Manager David Ryan is one of four members of an active Co-operators family: his father and two brothers are also Co-operators agents in Embrun, where his brother Philippe runs the show, and on Donald Street in Ottawa where his father and brother Louis are in charge.

While David (who has a degree in Business Administration), and his brother Louis (whose



background is Construction Engineering) originally had other career plans, both stepped in to help out their father several years ago, and are still going strong. David's specialty is insurance for high value homes and small businesses, while his colleagues at the new office cover the gamut of other areas. Two of the staff are full-time financial planners. In 1997, when David's father started the Donald Street operation, the business quickly expanded beyond the capacity of the premises when two financial planners were added to the roster. As a result, the family began the search for a new location, which led ultimately to the opening of the Beechwood office in September, 1999. David reports that the Beechwood location was chosen for its proximity to the three strong and established communities of Manor Park, New Edinburgh and Rockcliffe Park. He and his colleagues are keen to play an active part in the community as Co-operator agents traditionally have in other locations. Already they have provided a barbecue for the many hungry participants and spectators at the final tournament of the Manor Park Soccer League in October, and they look forward to involvement in future community events (volunteers at the January skating party, perhaps?) We

December 1999

welcome David and his colleagues and wish them well in their new location.

Another recent arrival among our advertisers is **Dr. Janet Leduc of Beechwood Optometry**, who has moved into the suite of offices next to The Co-operators at 178 Beechwood. Originally from Timmins, Dr. Leduc came to Ottawa in 1981.

This is the second office she has designed and she says she is 'delighted with the results.' This is an exciting new location as part of the growing Beechwood business community, and there is ample parking.

A dedicated professional who loves the rewards of helping people see better, Dr. Leduc has practiced optometry for the last 18 years during which time she has seen over 10,000 patients of all ages.

Dr. Leduc offers a full range of services including eye examinations, eyeglass and contact lens prescriptions and fittings. At the store, which is open 6 days a week, you will find a staff of six trained in custom fitting of frames and the care of contact lenses. There is a large inventory of quality designer frames to choose from and Dr. Leduc, who also enjoys the fashionable aspect of her work, will take to time to match a patient's face with the perfect frame in the latest style!

Dr. John Martins
Dr. Patricia Prud'homme

Dentists



35 Beechwood Avenue
New Edinburgh Square

742-8016

Leo La Vecchia
SALE: 20% OFF

from Jan. 1st to Feb. 29, 2000

on

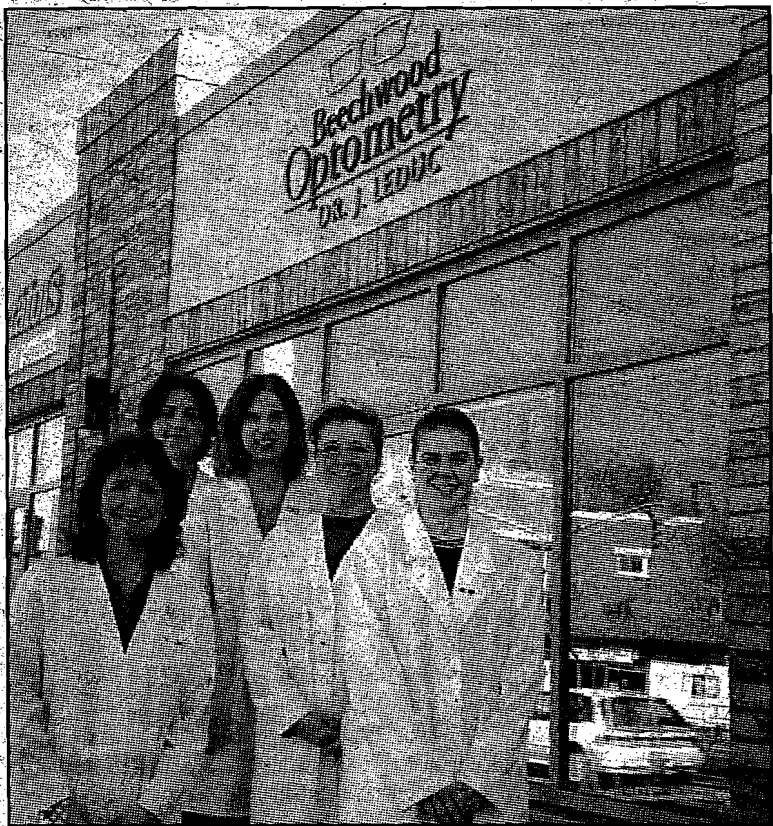
Made to Measure
Suits, Sport Jackets,
Overcoats, Pants

Ladies & Gentlemen
Finest European Fabrics
We also specialize in
Made to Measure Shirts
and Alterations



Enquire about our
new line of custom-
ordered ready-to-wear

17 Springfield Rd.
Ottawa, Ont. K1M 1C8
749-8383



Dr. Janet Leduc (left) and her staff: Krista, Nicole, Jackie and Beth

Activa Physiotherapy has had a busy fall ministering to the many injuries on our local football and soccer fields. Though the impact of a 200 pound linebacker will inevitably take its toll, many of these injuries are preventable through proper exercise and weight training. In preparation for the ski season this year (speaking of injuries!), Activa and their associates in the weight training field, Kimberly Robertson, a Certified Strength and Conditioning Consultant, and Jean Robert Eger, a Certified Fitness Consultant, have drawn up a list of preparatory exercises for the recreational skier. The list is ambitious but in the end, well worth the effort for the many avid skiers in the community. It includes:

- Aerobic conditioning 3-4 days per week for 20-30 minutes each time, (biking,

jogging, skating and steppers are all aerobic exercises).

- A regular stretching programme to improve flexibility, strengthen muscles and prevent injury (but remember never to stretch a cold muscle: stretching must be done after a 5-7 minute warm up and each stretch should be held for 20-30 seconds).

- Strengthening exercises for the back, abdominal muscles and legs, including step ups, leg extensions, leg curls, bicep curls, tricep extensions, abdominal crunches and back extensions.

For information on how to actually perform any of these exercises, call Activa at 744-4188. For the more serious competitive athletes in our midst, a private consultation with a weight trainer such as Kimberly or Jean Robert (known as J.R.) would be advisable before the start of

the racing season. Kimberley and J.R. can be reached at The Athletic Conditioning Centre at 225-2806.

Restaurants

While New Year's Eve will be comparatively quiet along Beechwood this year, several of our local restaurants are planning a special dinner to mark the momentous occasion. Zingaro's is planning a splendid 7-course Italian feast modelled on the epic meal in the film *Big*

Night, a movie about two Italian brothers who own a restaurant and create a memorable meal. Il Vagabondo will be offering two complete dinners, one veal, one seafood, at about \$25 a head. Further down Beechwood at Baco's, the chef is planning a special \$60 Table d'Hôte with three choices of main course: pine-roasted West Coast Salmon and King Tiger Prawns, with triple mustard and onion

sauce, sweet flag and maple-infused whipped Yukon gold potatoes, Haida Chicken Pot with oven-dried tomatoes, Woolwich goat cheese fritters, and toasted ehili oil, and maple vinegar marinated medallion of Alberta beef and lamb loin chop with snakeroot-infused tomato coulis and Mamomin griddle cake. As Baco's is almost full for the evening, make your reservations NOW!

The Y2K Travel Bug

... we recommend that clients contact the Department of Foreign Affairs and International Trade web site at www.dfa-itmaeci.gc.ca/travelreport/menu_e.htm.

By Brad Asselstine
Algonquin Travel

Hardly a client passes through our agency's doors these days without asking if the Y2K computer bug is going to disrupt their Millennium Year travel plans. It would be nice if we had a pat answer in reply but not even the "experts" can agree whether Y2K will disrupt any, some or all flights and related bookings. Our best advice is to arm yourself with as much information as possible and take common sense precautions before making plans.

Here at ground level we see this happening with our clients who for the most part are avoiding airline travel on the evening of December 31 and the morning of January 1.

There are no guarantees that taking this step will matter in the least, but our agents have certainly noticed a keen desire by area residents to skip those two days.

The same approach by travelers in general has forced many major airlines to scale back or cancel flights on New Year's Eve and New Year's Day morning. This market-dictated common sense has, however, increased demand for seats on either side of those dates, which are already seasonally busy.

Beyond that, we recommend clients contact the Department of Foreign Affairs and International Trade for the most up-to-date Y2K travel information. Their web site is printed above. Or telephone

them at 1-800-711-8977.

Foreign Affairs will provide a small pamphlet titled *Journey into Y2K: Advice for Canadians Travelling Abroad*, which makes excellent suggestions for basic travel contingency plans. We have a couple of copies in the office, but the department declined our request for a larger number.

The final word on Millennium travel could well have belonged to Yogi Berra when he said, "It ain't over 'til it's over." Not even top computer experts know what will happen, let alone the travelling public. Since the onus is on you the traveler to make the decision to fly, at the very least make it the most informed decision possible!



the co-operators

A Better Place For You™

IMPORTANT NOTICE

The address of our local office has been changed to:

**186 Beechwood Avenue
(613) 749-5600**

Ask us about
High Value Residence Insurance

Insurance Services:
Auto, Home, Commercial, Life and Disability.

Financial Services:
Financial Planning, Investment Planning, Estate Planning

See you at the new office!!!

We'll Fit Into

Your Schedule

As Well

As Your

Living Room.

Season's Greetings!

- Free Shop-At-Home Consultation
- Custom Draperies and Blinds
- Designer Fabrics
- Complete Interior Design
- Upholstery
- Bedding
- Distinctive Wall Coverings
- Decorative Accessories - Fabric Tiles
- Repairs, Parts and Service
- Commercial - Residential Services



Interior Design
Draperies Blinds Shutters
"Visit Us at Our Showroom"

1095 Bank Street, Ottawa (613) 730-2929

A Burgher at the Art Bank



By Carol Reesor

November: the most pristine time in the neighbourhood, when all the good bones of this special place are seen in clean beauty.

In our midst for many years, and a formidable force in contemporary Canadian art, Victoria Henry was appointed Director of the Canada Council Art Bank in June.

The Art Bank recently moved from Catherine Street to the bustle of St. Laurent Blvd. Vying for attention amidst the used car sales and commercial signs, the colourful sculptures outside send a strong message that art beckons as vigorously as any commodity in today's market.

Inside the low, red-brick building awaits a virtual tour of contemporary Canadian art history. And who better than Victoria Henry to wave the flag and conduct the tour.

This woman positioned herself in the 1970s and 1980s as the art dealer *par excellence* on Sussex Drive. Much of my own exposure to the emerging artists – female, Aboriginal, Third World and avant garde – took place on Friday nights as I circulated through her elegant rooms in the stone heritage building. Fabulous masks and wood carvings

from Ghana could be followed next month by the lambent, disturbing beauty of works by Jane Ash Poitras, or Joanne Cardinal-Schubert, or Robert Houle.

Today Victoria oversees a staggering 18,000 works of art in all media: paintings, sculptures, prints, drawings, and photographs by Canadian artists over the past 50 years. Despite her busy schedule, Vicki took me on a tour of enormous rooms with floor-to-ceiling wall hangers filled with art, all available to rent.

It felt like visiting a room full of old and dear friends you have somehow lost touch with, though you never meant to: Jean-Paul Riopelle, Jack Bush, Gathie Falk, Françoise Sullivan, Harold Towne, Joyce Wieland, Rita Latendre, Kenneth Lochhead. These are the big guns in our visual history, and Victoria Henry gets to be with them every day. Pardon my envy, but ...

The mandate of the Canada Council Art Bank is a splendid one, put forward by Suzanne Rivard, years ago. All those government offices were rather drear, with calendars and personal photos as the only décor. Why not support emerging artists as well as established ones, buy art, and

rent it back to responsible, appreciative but not-quite-ready-to-buy art lovers.

A win-win situation: the artists sell works; the Art Bank builds a fine collection; and individuals can choose what they want to see on a daily basis on their office walls.

A professional staff of art consultants assists Henry in reaching out to the community. Institutions such as banks, corporate sector offices and government departments make up the market of Art Bank clients. Over 5000 works are currently in circulation.

When I walked into the Art Bank this month, the gracious senator Janis Johnson from Manitoba was selecting works for her office. She wanted a minimalist look. A consultant, apprised of her needs and space, had chosen a selection for her consideration. Given the extraordinary options, clients can walk about the Bank and look at many works they would probably never have considered. Such is the joy of this remarkable facility.

Victoria Henry comes to her new position from three diverse training grounds. From 1975 until 1992 she was director of the Ufundi Gallery on Sussex Drive. Initially, she presented art from Asian and

African cultures. Gradually, recognizing the emerging genius of Canadian artists, she built a stable of mid-career artists – including Carl Beam, Jane Martin, Pat Durr, Trevor Gould, Shelley Nero, Mark Masters, Betty Davison and Marlene Creates – whose work continues to be well respected.

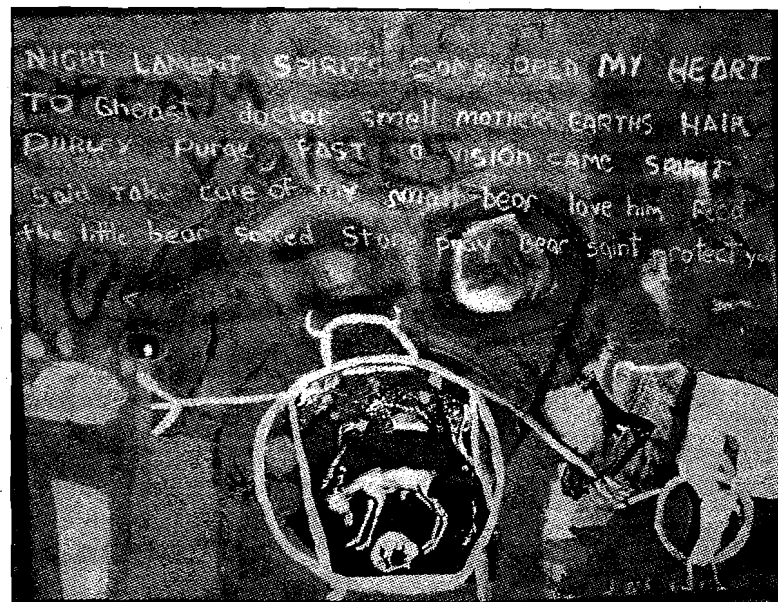
In 1993 she returned to school and completed graduate studies at Carleton University. Then she moved across the river to Douglas Cardinal's evocative sculpture, the Canadian Museum of Civilization. She worked there as Chief of Partnerships and Product Development, forging a strong business association with other public institutions and Canadian manufacturers and distributors.

All of which make her highly suitable for this new challenge of pursuing and persuading corporations, institutions, government departments and agencies that this is the best deal in town. Where else can you go and be offered your choice from the largest collection of contemporary Canadian art for as little as \$120 a year, to rent for your space. For those of you unable to find your calculator, that is a mere \$10 a month.

Not only is the cost reasonable, but you will have the assistance of the Bank's professional art consultants, who can provide you with recommendations and advice that best meet the setting and décor of your work environment. Installations are included in the service. Of course, the final selections are up to you.

The Burgh's own Alex Wyse has several fine large-scale pieces in the Bank that I had never seen before. Ivy Crescent's Ron Noganosh, the subject of a retrospective at the Ottawa Art Gallery this month, has his subliminal sculptures in the Art Bank's collection as well. At this remarkable site, there are thousands of art works that you as citizens of Canada have bought and paid for. They are available to share with your clients, colleagues and contacts. And Victoria Henry is at the helm to ensure that the best of our country's art goes out across the land, to celebrate the creative spirit of the country. Best of all, rental fees are tax-deductible.

Keep artLiaison apprised of any and all art events and endeavours. Call Carol Reesor at 741-5656, fax 741-3357, e-mail: artliaison@sympatico.ca



Davidson
tuning
regulation
repair

Pianos

Dale Davidson
piano tuning
and repair
(613) 797-4509

BEAUTY MARK

ESTHETICS
FACE AND BODY CARE

2 Beechwood Avenue
Ottawa, Ontario
K1L 8L9
613 744-4460

Frame
of mind

custom framing

decorative objects

(613) 742-6196
417 Mackay St.

FERN HILL SCHOOL

Grade 1-6, Kindergarten, Pre-School
Situated in New Edinburgh, Fern Hill School offers programmes for children aged from 2 to 12 years in caring and stimulating environment.

746-0255

50 Vaughan Street, Ottawa, ON K1M 1X1

Ron Noganosh Exhibition Opens December 9 at Ottawa Art Gallery

By NEN Staff

The work of local artist Ron Noganosh will be featured in a major retrospective exhibition at the Ottawa Art Gallery, from December 9 to the end of February.

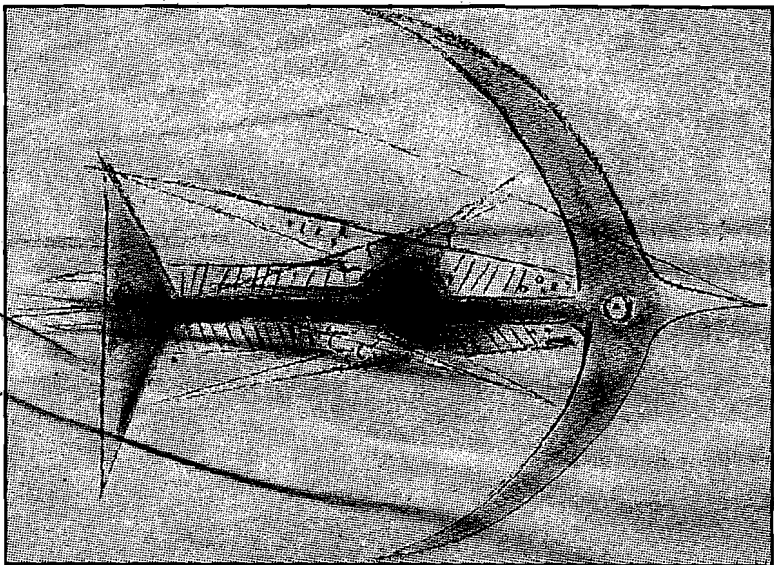
Ron lives on Ivy Crescent and is well known to Burgh residents. He was one of the dozen artists featured two summers ago in the NECA-organized art show that celebrated the opening of the new Field House. Carol Reesor featured him last year in one of her NEN artist profiles.

Ron was born in Magnetawan, Ontario, and his Ojibway roots are evident in

his work. Marked by a sense of humour and a political edge, his sculptures are made of everyday, discarded and recycled materials. Ron studied graphic design at George Brown College in Toronto and Fine Arts at the University of Ottawa. His work has been included in exhibitions in Canada, the United States, France, Germany, Denmark, Finland, Japan and Costa Rica.

The Ottawa Art Gallery at the Arts Court (2 Daly Avenue, corner Nicholas) is open Tuesday to Friday, 10 a.m. to 5 p.m., Thursday until 8 p.m., and Saturday and Sunday from noon to 5 p.m.

Contemporary Art of Ibero-America Karsh-Masson Gallery, City Hall



Cuban artist Wilfredo Lam, *Untitled*, ca. 1960, engraving

By NEN Staff

This impressive exhibition displays works of art taken from 21 Ibero-American embassies based in Ottawa. These remarkable and vibrant pieces offer the visitor but a

taste of the rich and diverse artistic activity of the nations of Latin America, Spain and Portugal. Well worth a visit. The exhibition runs until December 3. The Gallery is open daily, 9 a.m. to 9 p.m.

Small Packages: A Holiday Gift and Craft Sale Ottawa Art Gallery

Once again, good things come in small packages at the Ottawa Art Gallery's Art Rental and Sales Service! At Art Rental's annual pre-Christmas exhibition and sale, you can choose from many one-of-a-kind hand-crafted ornaments, ceramics, gift boxes, candles and small works of art created by a couple of dozen area artists, including Louise Cass of

Rideau Terrace. Wearable art is a new feature. Look for jackets, scarves, eyeglass holders, elegant bead work, James Brook's biker-part jewellery, and John Urban's Celtic silver. Bigger pieces include twig furniture and CD cabinets.

The sale opens Saturday Nov. 27 (9 am - 5 pm) and Sunday Nov. 28 (11 am - 4 pm), and continues until December 18.

Jean Vanier Catholic Intermediate School Leadership Program

By Amanda Davies

Over the past month, thirty students from Jean Vanier Catholic School have taken part in a leadership program. These individuals are the Ambassadors and Student Council elected by their peers.

The Leadership Program provided the students with many opportunities to explore who they are and their many skills as well as helping them to develop confidence in the process.

The students spent a full day at Vanier City Hall under

the direction and motivation of Mr. Sharp and Mr. Doyle from the company Intersol. These two gentlemen encouraged the students through various activities to make positive decisions, communicate effectively and trust in others and their opinions. All the students really enjoyed themselves.

On Wednesday, November 10th, these thirty students completed the program by presenting speeches to an audience of parents, peers, teachers and special guests.

The three outstanding judges were Tim Kennedy, Mia Overduin and Gerry Lacroque.

We would like to thank our teachers Bonnie McGilchrist, Jo Gifford and Justin Doyle for the fantastic evening.

The three winners were: in first place, Amanda Davies; in second place, Ben Fraser; and in third place, Matthew Gifford.

We would like to thank all the people who participated for their support.



They thought they'd never have enough furniture.

It seemed huge at first. So many rooms, so little to put in them.

It didn't take long. A new living room suite. The baby's crib. A place for the grade seven science project. Teenage bodies sprawled in front of the television.

Then, suddenly, the kids were grown and gone. Suddenly it was huge once more. Maybe more than they needed. Certainly more than they wanted to take care of.

Maybe it's time.

We invite you to consider the comfort and convenience of our residential retirement community.

We understand the importance of feeling truly at home wherever you choose to live. You'll find it demonstrated in everything we do and in everyone here to assist you.

If you think it might be time to make a move, call or come see us.

We'd love to show you something that's a perfect fit.

New Edinburgh Square Retirement Residence

420 MacKay Street
Ottawa, Ontario K1M 2C4
Tel: (613) 744-0901



Diversicare



Welcome to an ARTFUL Evening



Ingrid McCarthy in her studio

By NEN Staff

ARTFUL is a one evening art show, organized by local artist/theatre director Ingrid McCarthy to showcase her own work and that of two other Ottawa artists: potter Heidi Geraets and mixed-media artist France-Marie Trépanier. The show will be held in MacKay United Church Hall on December 5, from 7 to 9 p.m. There is no entrance fee. Everyone is welcome!

Ingrid McCarthy

ARTFUL will be Ingrid McCarthy's third major and first independent group exhibit in the Burgh. A previous show was sponsored by the German Embassy in Ottawa. Ingrid's work could also be seen at two New Edinburgh Community Art Shows. At the most recent one, celebrating the opening of the Field House in Stanley Park, Ingrid's painting of a single poppy drew much attention and won first prize in a popular vote.

The 22 watercolours on display, a palette of powerful colours which balances delicate and bold washes, are the best of Ingrid's latest work. With nostalgia Ingrid recollects the abundance of luscious summer flowers, walks across country fields in Ireland and the Yorkshire Moors and the splendour and dazzling play of light and shadow in the Tuscan Hills.

France-Marie Trépanier

France-Marie Trépanier presents mixed media works on paper and collage, and paintings in acrylic. The work she is presenting in this show, "Evolving Moments," is mostly on paper.

"I believe an art expression is a continuation of oneself," says the artist. "Any line transcribed on the canvas is an extension of a feeling, a movement from the soul. To have depth an artist must meditate and reach within her/himself to transfer emotion to the canvas. The lines, shapes and colours convey real beauty when they are the results of a rich subconscious."

France-Marie Trépanier takes her inspiration from people either as models or from interesting pictures found in newspapers. "All my paintings have human beings as the basis of my inspiration. I overlap several drawings of the subject and work with the shapes and the colours to arrive at a composition that is both pleasing and intriguing. Although my inspiration is human in nature, the result may sometimes look more like a landscape or an imaginary dream. I don't find this to be contradictory since we, as men and women, are so complex and multifaceted. What we see on the surface is barely the tip of the individual's personality. My paintings tend to camouflage the individual in a series of shapes and colours that reflect the deeper being hidden inside each one of us."

Heidi Geraets

"Take off your left shoe, place it in front of you and reproduce it as closely as possible." This was Heidi Geraets' introduction to clay, many years ago at the University of Ottawa in Sculpture 1. After obtaining a B.A. with a concentration in the arts, Heidi worked for a



France-Marie Trépanier (l) and Heidi Geraets

while in arts administration. Eventually she finished an honours degree in the theory and history of art, and began to work on a Master's.

In a way, Heidi did come back to clay a few years ago.



Clay allows Heidi to hone her skills of throwing on the wheel, finding the right balance, and enjoying over and over again how beautiful shapes emerge from a clump of wet clay on a fast-spinning

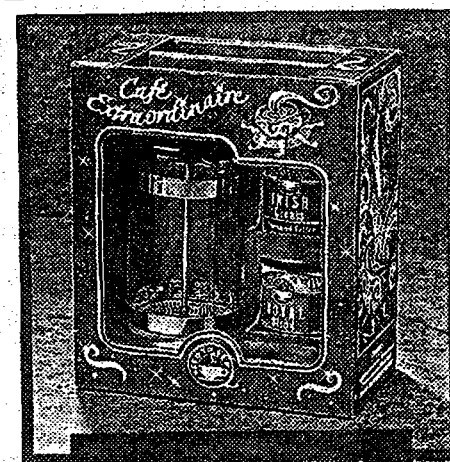
wheel. Clay allows Heidi to experiment with forms, glazes and ideas. Heidi respects the medium itself and attempts through her work to communicate this respect, as well as the pure joy of creating.

GIVE the GIFT of COFFEE

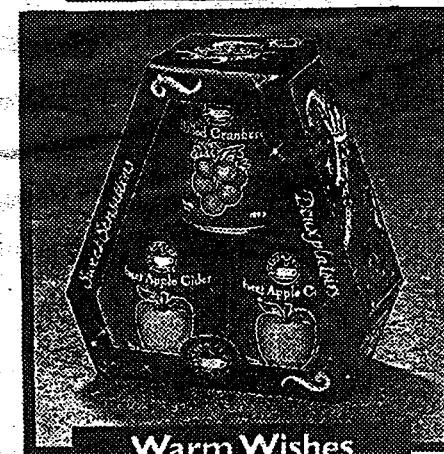
Second Cup has everything you need to make gift-giving fun and easy. Choose a beautifully packaged one pound coffee gift, from our selection of over two dozen coffees. Let us customize a gift assortment that's right for you with gifts ranging from our exclusive ceramic collection to our private label coffees and teas.

**SO THIS HOLIDAY SEASON,
GIVE THE GIFT OF GOOD
TASTE.**

**1 Springfield Road
(Corner of Beechwood)
744-0287**



Café Extraordinaire



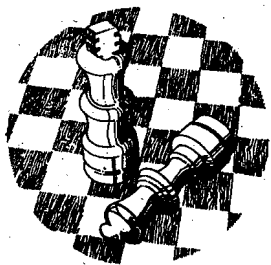
Warm Wishes
(Cider)

**OTHER GIFT SETS
AVAILABLE**



**THE SECOND CUP
CONNOISSEUR GIFT GUIDE
IS AVAILABLE AT
EVERY STORE LOCATION**

Checkmate in the Burgh..



The Burgh's own Chess Club is forming this winter. The club will run under the auspices of the Crichton Community Council and it is hoped it will be a similar concept to the popular Euchre Club. The Chess Club will be open to players of all levels and games will be set up to match players of similar abilities.

Those interested should not let any perceived lack of skill hold them back. An encouraging and friendly atmosphere will be sought, and a wide range of skills is expected.

What format the club takes will depend largely upon the first few to join. Initially the goal is to meet for an evening of games once every two weeks. Other possibilities for activities are to use the evenings to share strategies or to obtain coaching. It is hoped that members will be able to bring their own chess sets.

The first meeting will be held in January. Those interested should look up the information in the winter flyer of the Crichton Community Council, or call Charles Wesley-James at 746-7060.

Pickwick's Pub Remembrance Dinner

By Peter deM. Jarvis

On Sunday November 7, Gordon Douglas and his Pickwick's Pub staff said thank you and thank you again to our war veterans and their wives, widows and sweethearts resident in the Burgh and environs at their third annual Remembrance Dinner.

When veterans dine together there is always the traditional ceremony and solemnity mixed in with the camaraderie of shared experiences of battle that only old warriors and some peacekeepers can truly know. But they don't talk about the memory-buried, inexpressible savagery of their experiences by land, sea and in the air. Instead they retell the venerable stories that highlight the lighter side of overseas service. And of course they recall the old friends who didn't make it back.

The formal part of Pickwick's Dinner was directed by Vice-Admiral Spike Hennessy whose military duty dates from the mid-thirties. Captain (N) Pat Nixon proposed the Toast to the Queen. There followed the most moving moments of the evening beginning with the Toast to Fallen Comrades proposed by RCAF Lieutenant-General Jim Davies, the reading of the Act of Remembrance by pilot and prisoner of war The Hon. Roger Teillet, P.C., followed by the minute of silence. The Grace, by wartime Padre The Reverend Alex Mackenzie, heralded a fine dinner that easily maintained Pickwick's high standards.

After dinner flight officer David Chance proposed the

Toast to wives and veterans' widows. Major Peter Jarvis, Royal Canadian Dragoons (12 years old when the war ended), then read Erin Robbins' splendid poem entitled "Parfois-Sometimes" and dedicated to the Canadians who served in the cause of freedom, which she wrote on November 11, 1997 after visiting the War Museum. The poem closes with these lines:

"But every time the eleventh of November dawns, I remember to say thank you and thank you again To the brave soldiers who made Canada A place of peace."

The Remembrance Dinner concluded with the singing of a rousing O Canada and the Benediction by the Reverend Canon Jim Beall, Rector of St. Bartholomew's, the Garrison Church of the Burgh.

"At the going down of the sun and in the morning, we shall remember them."



Classified Ads

RATES: \$5, first 25 words; \$10, each additional 25 words, payable on submission of ad. Public service ads (e.g., lost & found) free. Call Barbara Benoit, 749-5904.

PIANO WANTED for St. Brigid's Church basement. If you have a piano you can donate, please call St. Brigid's Rectory, 241-5285.

PLUMP, PLACID six-year-old mutt, very gentle, very sweet, very needy, now being fostered, dearly wants loving home. Call Willy Wilgress, 749-9249.

RESCUED DOGS AND CATS NEED HOMES. If you can help, please call Willy Wilgress at 749-9249.

NEED A DOG WALKER? I'm reliable, conscientious, and live in New Edinburgh. Cat care also available. References. Call Catherine, 744-5677.

SEEKING ACCOMMODATION. Mother and 4-year-old son seek large room or bachelor apartment in New Edinburgh or Manor Park area in safe, non-smoking environment. Please call Suzanne, 613-658-3354.

SHEPHERDS NEED DONATIONS. If you have difficulty dropping off your smaller donations of food, toiletries or other articles to the Shepherds of Good Hope, please call Claudia Waters at 745-7140. I will be happy to pick them up and deliver them for you. At this time, coffee, tea, margarine, sandwich fillings and warm clothing are greatly needed. Thank you for caring. Every donation makes a big difference. 745-7140.

ELECTRICIAN, licensed, insured. We do: rewiring, panel changes, rec rooms, garages, phone and cable set-ups, computer lines, plaster patching. Call Don, 232-1856.

FRENCH TEACHER, 25 years experience. University and government French teacher will prepare you for level B or C. Residence in New Edinburgh. Call Pierre Borsu, 241-7685

DOG WALKING and sitting. (Cats too!) Emergency and regular walking, mid-day or other times. Pet behaviour consultations, breed research, investigations. References. Liba Bender, 746-4884.

HOUSECLEANING by longtime Burgh resident. Good references in neighbourhood. Available immediately. 744-8449.

TUTORING, K-6 levels, all basic subjects, ESL, remedial to enrichment. Student's home or mine. References. Lenore Hoar, 745-4829. "Literacy knows no season."

The VON Perley Rideau Day Program needs volunteers to assist clients living in the community who suffer from Alzheimer disease and other dementia, and to provide respite for caregivers. Training is provided. Please call Neil at 526-7170, ext. 8808.

Over 15 Years of Quality Renovations

DENYS BUILDS DESIGNS

PAUL DENYS
Award-Winning Carpenter & Designer

- Renovates
- Investigates
- Designs
- Restores
- Repairs

236-6516

54 Mason Terrace • Ottawa • K1S 0K9
www.cybernet.ca/~pauldenys

**Searching For That Last-Minute Christmas Present?
Need a Gift for the Person Who Has Everything?**

Local Ottawa Author Ken Ross
(former President of Glebe Little League)
Will Be Signing Copies of His Latest Book

Babysitters Don't Live Next to Highways



Saturday, December 18
10 a.m.-1 p.m.
The Book Bazaar
755 Bank Street



Drop in and meet the author.
Proceeds to the Snowsuit Fund.

The book will be available after December 3 at The Book Bazaar (233-4380) and Books on Beechwood, 35 Beechwood Avenue (742-5030).



Alexander Montessori School

1002 Karen Way in Manor Park

Quality Montessori Education for Children of Ages 2½ - 6 and 6 - 9

Experienced, AMI-Trained Directress

Full-Day and Half-Day Programs

Hours of Operation:

8 a.m. to 5:30 p.m.

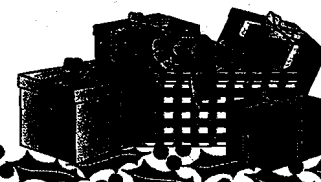
For further information contact Leislle Alvarenga
at: 747-7188 (School) or 733-6137 (Home)

Giving you the Gift of Time This Holiday Season

In a time crunch? Mail Boxes Etc.® can pack and ship last minute gifts as late as December 22, in time for Christmas morning. Each MBE Centre provides expert packing services and your choice of courier companies, such as UPS and Canpar. We can pack and send fragile, valuable, large or awkward items. This holiday season trust the experts at Mail Boxes Etc.



MAIL BOXES ETC.®



372 Rideau St.
241-7144

532 Montreal Rd.
747-9353

Burgh Breezy its



Doris Buske Gadde celebrates her 90th with her two nieces, Ethel Buske Montsion (L) and Ethel Sivyer Proulx.

Happy Birthday!

Congratulations to Doris Buske Gadde, who celebrated her 90th birthday on October 31 at a party with grandchildren, great-grandchildren, relatives and friends at the home of Mervyn Buske and his wife Lorraine.

Milestones

Congratulations to local artist Ron Noganosh of Ivy Crescent. A retrospective of his work opens at the Ottawa Art Gallery on December 12.

New Neighbours!

A warm welcome to Michael Burchill and Aynslee Kyte, just arrived on Noel Street.

Babies, babies!

Congratulations to Susan Kennedy of Griffin Kennedy Interiors on the birth of her daughter, Kaelyn Swan.

We all join the New Edinburgh Children's Cooperative Playgroup, in welcoming three new junior members:

Madeleine, Thomas and Nicholas Parkanyi of Avon Lane are joined by a new baby sister, born in November;

Kim, Alyssa and eldest brother Alex Rochefort have a new little brother, Michael;

And Nathan Rideout has a new baby brother too.

We congratulate the mums and dads as well, and wish them joy of their expanding families.

Canine Content

Best wishes to Octave Rodocanachi for a speedy recovery from his recent surgery.

Condolences

Our deepest sympathy to the family of Frank Westfall of River Lane, who passed away on November 10. Frank was a lifelong Burgh resident. Ethel Proulx interviewed Frank over the summer about his memories of the Burgh, and her article will appear in February.

Burgh Christmas Bulletin Board

Mon., Nov. 29, 6 pm
Mackay United Church
DINNER WITH A PLUS
3 Course dinner and theatre,
featuring John Huston as
Charles Dickens in A
Christmas Carol. Tickets are
\$35 at the United Church
office.

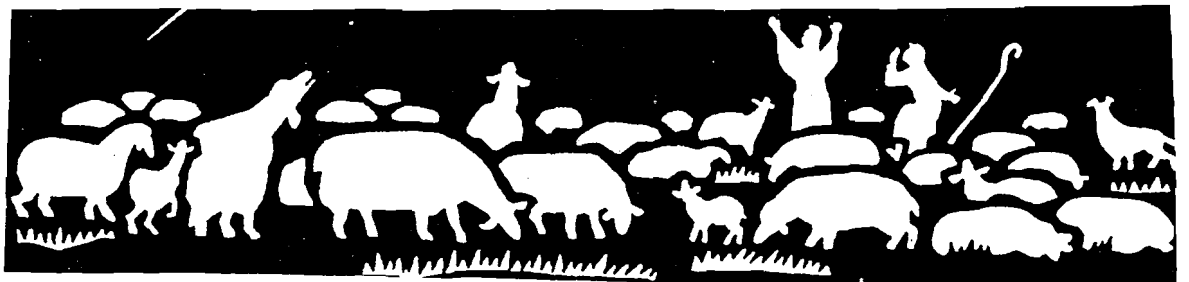
Sat., Dec. 4, 10 am - 2.30 pm
Good Companions Seniors'
Centre, 670 Albert St.
MILLENNIUM CHRISTMAS
BAZAAR
Tea Room, Silent Auction,
White Elephant, home baking,
plants, books, arts & crafts,
decorations, stained glass
creations and much more. Free
admission and parking.
Information: Heidi, 236-0428

Sun., Dec. 5, 4 pm
Mackay United Church
ASHBURY COLLEGE
CHOIRS ANNUAL
CHRISTMAS CAROL
SERVICE

Sat., Dec. 18, 10 am
St. Columba Church,
24 Sandridge Road
ANNUAL SALE OF FRESH
HOLLY. Proceeds go to the
Altar Guild to provide altar
flowers throughout the year.

MACKAY UNITED
CHURCH 125th Anniversary
Cookbook, "Family
Favourites" is now available
for sale. Information: Church
Office 749-3991.

Wednesday Evenings
ST. BRIGID'S CHURCH
CHOIR invites new members
and welcomes anyone who can
play musical instruments such
as guitar, drums, flute, violin
or brass instruments. The
Choir practices each Wed.
evening. The music program is
drawn up monthly. If you are
free to play on occasion, please
call St. Brigid's Rectory at
241-5285.



CHRISTMAS SERVICES

ST. BARTHOLOMEW'S
Sun., Dec 12, 4 pm
Festival of Lessons and Carols
for Advent.

Sun., Dec. 19, 10.30 am
Church School Christmas
Pageant

Fri., Dec. 24, 4 pm
Family Eucharist

Fri. Dec. 24, 10.30 pm
Carols and Choral Eucharist

ST. LUKE LUTHERAN
Wed. eves, Dec. 1, 8 & 15,
Advent Services, 6.15 Soup
and Sandwich Supper followed
by 7.30 Worship

Sun., Dec. 19, 9.30 am
Carol Singing followed by
Children's Christmas Program

Fri., Dec. 24, 7 pm
Carol and Candlelight Service
Bilingual (English & Spanish)
Worship at 8.30 pm

Sat., Dec 25, 10 am
Christmas Worship

Fri., Dec. 31, 7.30 pm
New Year's Eve Worship

ST. BRIGID'S ROMAN
CATHOLIC CHURCH
Christmas Eve
Children's Mass and Nativity
Pageant, 5 p.m.
Carol Service, 8 pm
Christmas Eve Mass, 8:30
Filipino Mass, 10:15 pm

Christmas Day
Mass, 10 am

December 26-27
Mass, Saturday, 5 pm
Mass, Sunday, 10 am & noon

ST. JOHN EVANGELICAL
LUTHERAN CHURCH
Fri., Dec. 24, 7.30 pm
Christmas Eve Service

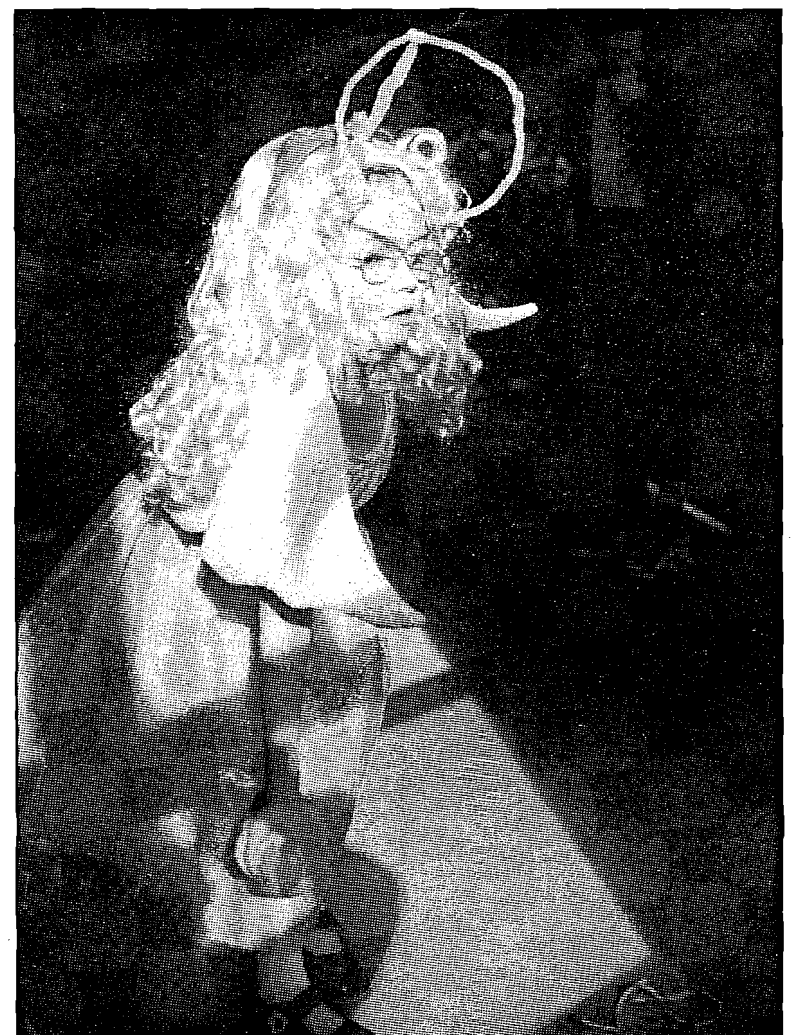
Sat., Dec. 25, 11 am
Christmas Day Service

Sun., Dec. 26, 10 am
Service Observing the Feast of
St. Stephen.

MACKAY UNITED
Sun., Dec. 12, 10.30 am
White Gift Service

Fri., Dec. 24, 7.30 pm
Christmas Eve Service

Fri., Dec. 31, 11.15 pm
Special New Year's Eve
Service



DEADLINE

For the next issue
Of the New Edinburgh News:

JANUARY 10

(New Editor: Carolyn Brereton:
749-5499)

