

NEW EDINBURGH NEWS

November, 1978

Officials Praise Neighbourhood Playspot at Ribbon-Cutting

The New Edinburgh Playground at Crichton Schoolyard was officially opened at 12 noon on October 27 by Jane Dobell representing the Board of Education and then - Deputy Mayor Marian Dewar, on behalf of the City. A number of area residents and the school children were on hand for the ribbon-cutting ceremony.

There is no supervision of the playground so that parents are responsible for their own children.

Unfortunately, there have been reports of skirmishes between some of the older, more forceful children and teens who are drawn to the area and the apparatus. Area parents should stress that this



With scissors in hand, Deputy Mayor Marion Dewar delivers a few words to those present before cutting the ribbon to declare the playground officially open. The ribbon was tied to two of the many maple saplings which now enhance the previously-barren playground. To her left is Jane Dobell, for the Board of Education.



The playground, built by the City at a cost of \$64,100 is leased from the Ottawa Board of Education for a ten year period. The facility, along with the one currently under construction at L'Ecole Barrette, has been on the books for several years; it has been included in the budget for more than two and is now finally a reality.

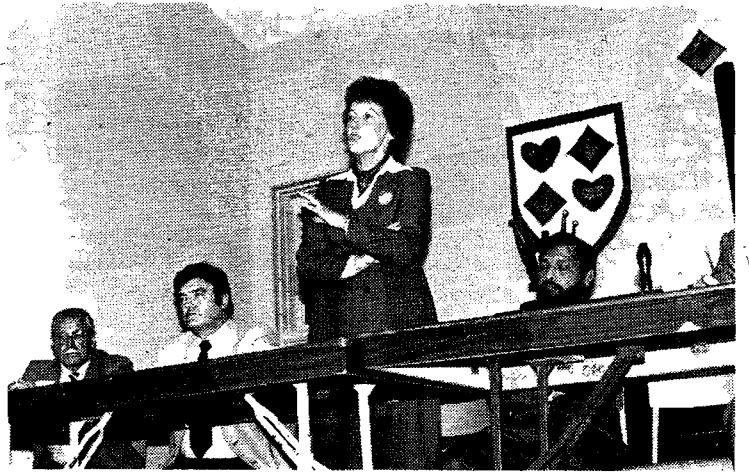
Although situated in the Crichton yard, it is a playground meant for the use of the entire neighbourhood, after 3:30 pm and on weekends.

playground is for the use of every age group and that their older children should be considerate of the younger ones enjoying the playground. Some of that consideration should be demonstrated not only in a willingness to help the younger, less adept children but in a restraint on language while the younger children are present.

"We cannot police the school playground; we can ask that the older children take the responsibility and see that it is a pleasurable attraction for all.

New Edinburgh Community Association congratulates Marion Dewar, a long time friend of the Burgh, on her November 13 election as Ottawa's new mayor. Pictured here at the well attended All Candidates Meeting held October 26 at Crichton School, Dewar in a typical stance, answers a question from a member of the audience. She will assume office Dec. 1. Rideau Ward Alderman Rheel Robert was re-elected to Council for a seventh term.

Association Congratulates Mayor-Elect



OMB Hands Down Roads Decisions Examine Impact on New Edinburgh

By Ed Browell

Following the completion of its hearings on the main part of the Official Plan of the Ottawa-Carleton Planning Area on May 16, the Ontario Municipal Board (OMB) delivered decisions on what had been presented to them by municipalities, citizen's groups and private citizens since the time the Board commenced hearings in Ottawa on February 14, 1977.

The hearing was one of the longest in the history of the OMB and involved 325 witnesses and over 1000 exhibits. Although the OMB did not agree to hold hearings during evenings, it did agree, under pressure from citizens' groups, to meet on certain evenings to hear evidence from citizens who were not able to leave their employment during daytime hours. Since the one portion of the Plan in which the greatest citizen interest appeared was in regard to "Transportation Links", the Board met with citizens' groups on Tuesday and Wednesday evenings from January 16 to March 16, 1978 for this purpose. The Board particularly mentioned "the assistance received from the manner of presentation and quality of the evidence and presentations by the citizens' groups and other individual members of the public".

The Board made a tour of the Region by air and also toured the proposed and existing transportation links.

Board Takes Overview

Throughout the hearings — and in its report — the Board made it clear that it would not accept any suggestion that the Official Plan as a whole, or in part, could be returned to the Region for complete review and updating. The Board noted that its responsibility was to supply to the Region an approved Official Plan, even though the Plan might not be totally up-to-date and as satisfactory as might be desired by all participants. The Board noted that the Regional Official Plan "is only the first step in the formulation of the complete planning scheme for Ottawa-Carleton. It is to be followed by local area official plans, secondary plans and zoning by-laws and in that order".

In view of the fact that these decisions of the OMB have been

widely reported by the local media, the balance of this article deals only with the two issues of direct concern to residents of New Edinburgh: the Ottawa River (East) Beechwood-Hemlock/St Patrick Street link and the Vanier Parkway.

In its opening remarks on transportation matters, the Board noted: "It was argued that such an extensive network may not now be required bearing in mind the decrease in population growth experienced since the Plan's adoption in 1974. However, the Board agrees with Regional Council that useful existing roads as well as potential rights-of-way should now be declared and protected. That is not to say that the entire system so designated will be immediately developed. The conclusion arrived at followed the consideration of various potential growth areas as well as places of employment, and the development of the system will be staged as required by the general development within the Region. Indeed, some portions of the system may never be required, or not so for many years to come, but the routes and rights-of-way should now be protected until the final determinations are made. Such a policy also permits the release of local municipalities to those presently existing Regional roads which are not now considered necessary for the overall Regional road system". The Board also noted that as a result of ongoing studies since the adoption of the Official Plan, Council of the Regional Municipality of Ottawa-Carleton (RMOC) has reconsidered certain of the transportation links.

Beechwood-Hemlock

On the Beechwood-Hemlock link, the Board commented as follows: "The route is far from being an accomplished fact, with much negotiation and study still required. In the meantime, it is the position of the Regional Council that the right-of-way be protected. The Board would agree", and "The evidence supporting the Region's position indicated that the link has been performing a Regional function in the past and will continue to do so. It would also provide additional

access to the proposed Kettle Island Bridge as well as the proposed Outer Ring Road". And finally "It is clear from the evidence that the link is, in fact, a major roadway today and will undoubtedly remain so. St Patrick Street is a relatively wide roadway and it would not appear that widening would be required. In such an eventuality, the Regional Official Plan policies would protect heritage locations, and as well a degree of protection is afforded under the Ontario Heritage Act, 1974. Should traffic volumes require it, the Region would undoubtedly consider a one-way pairing".

Parkway Still on Books

The Board's decision on the Vanier Parkway was "The Region is concerned that much of the area, through which this parkway would pass, is or will be available for redevelopment. There is congestion now, and increases in traffic volumes resulting from such redevelopment could not be adequately handled by existing neighbourhood streets. The Vanier Parkway, which has been partially constructed, will eventually link the Queensway with the Macdonald-Cartier Bridge and is in accordance with an agreement between the National Capital commission, the Regional Municipality and the Cities of Vanier and Ottawa. While the section which is proposed to pass through the Overbrook Community will, in fact, tend to divide that community, there appears little alternative since River Road, which does skirt the area to the west, is very narrow and cannot be widened to the extent that would be necessary. It is deemed essential to meet the future demands throughout the corridor. Traffic plans for neighbouring communities have been based on the assumption that the Vanier Parkway was a committed facility and would help to relieve traffic pressures in those neighbourhoods. It was argued that while its location may have some detrimental effect to the citizens of Overbrook, there really was no viable alternative and that the roadway would assist in relieving local Overbrook streets of some traffic. There is,

Cont'd on Page 3

New Edinburgh Community Association



David Henry
President
Community Assoc.
Exec.

First, congratulations to Rheel Robert and Bruce Grant on a hard fought battle for the Rideau Ward seat, Second congratulations to Rheel Robert who once again is the alderman.

Well Rheel there may be some difference of opinion on your aldermanic capabilities, but there's no doubt about your ability to get out the vote!

One issue that I had hoped would get more attention in the campaign is the Neighbourhood Study. It appears that this is a major step in defining the longer term needs and concerns of communities. Many of the communities in the older part of the city have completed studies and to make sure that everyone has the same message, everyone, including aldermen and aspiring aldermen, is invited to attend meetings, of the

Community Association. That's the surest way to keep in touch with what's happening, and what people are concerned about. These meetings are held the first Tuesday of every month, unless otherwise indicated.

One of my other greatest hopes is that we one day will have a truly bilingual newspaper. But, this depends entirely on the willingness of people to contribute articles. If anyone would like to volunteer to edit the French section of the paper it would be most welcome. The sooner New Edinburgh completes a study the better.

One other aspect which concerns me is the "Two Solitudes" nature of the Burgh. Much more will have to be done to involve more people in the Association.

See P. 5 for 'Community Desk' Info.

wells gallery

459 Sussex Drive

PAINTINGS
GRAPHICS
SCULPTURES

FINE CRAFTS
FRAMING
EVALUATING

November 15 - December 2nd
Graphics by Jo Manning and Ed Bartram

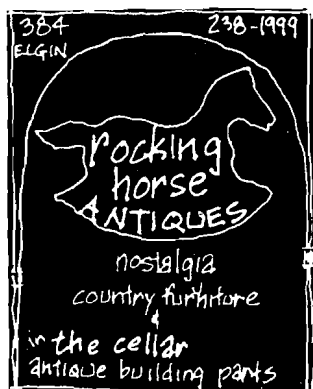
Open Tues. to Sat.
10.30 to 5.30

235-0832

384 Elgin

238-1999

browsers welcome!



country furniture
folk art • tools
wooden implements
hardware (antique and repro.)
nostalgia • collectables
antique doors and door knobs
window frames and mirrors
lead glass • mantles
lite fixtures • sinks
plans and design services

OPEN 7 DAYS A WEEK!

NEW EDINBURGH NEWS is published bi-monthly by the New Edinburgh Community Association. A non-profit publication serving the New Edinburgh Community.

Editor: Gaye Applebaum; Associate Editor: Heather Matthews;
Advertising representatives: Annie Buie and Debbie Burke.
Advertising rates available on request.

The Forgotten Monument

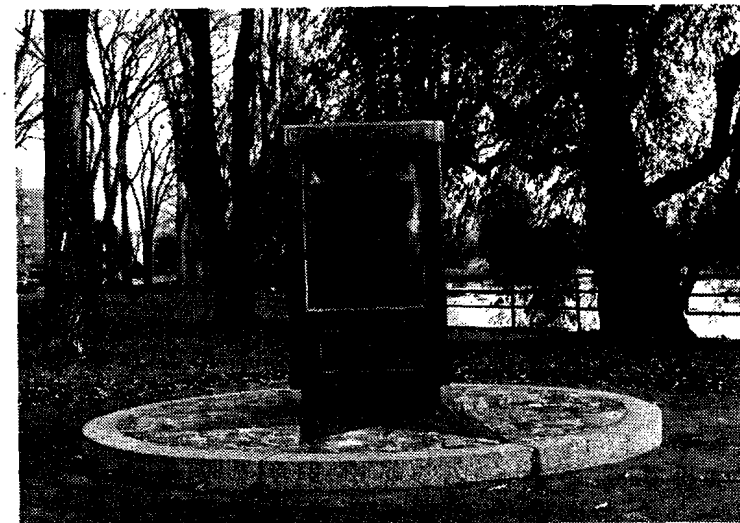
Murray Sutherland

In the early months of 1945, the British 21st Army, short of junior officers, made an Appeal to the 1st Canadian Army for volunteers on loan. Six hundred and seventy-three Canadian officers volunteered. Hence the term CANLOAN. Casualties totalled 465 of which 128 were fatal.

In remembrance of their sacrifice, the CANLOAN Memorial, little-known by most Ottawans and many residents of New Edinburgh, was erected on Stanley Avenue near Sussex Drive by the Governments of Canada and the United Kingdom, the British Regiments in which they served, the CANLOAN Army Officers' Association and CANLOAN next-of-kin. The Memorial, which bears the inscription, "Their fallen are honoured in this quiet place in gratitude and remembrance of the cost of liberty." was unveiled in June 3, 1961, by the Right Honourable Georges P Vanier, DSO, MC, CD, Governor-General of Canada.

The officers who gave their lives served in the following British Army regiments:

Gordon, Highlanders, Royal Hampshire Regiment, Dorset Regiment, South Staffordshire Regiment, South Wales Bor-



derers, Somerset Light Infantry, Welsh Regiment, Border Regiment, Queen's Regiment, Royal Scots, Highland Light Infantry, Herefordshire Regiment, Worcestershire Regiment, Parachute Regiment, East Lancashire Regiment, Black Watch, King's Own Scottish Borderers, Cameronians, Dorset Light Infantry, East Yorkshire Regiment, Duke of Cornwall's Light Infantry, Royal Warwickshire Regiment, Cameron Highlanders, Royal Wiltshire Regiment, Hallamshire Regiment, Glasgow Highlanders, Royal Norfolk Regiment, South Lancashire Regiment, Royal Scots Fusiliers, Devonshire Regiment, Highland Light Infantry, Royal Welch Fusiliers, Royal Irish

Fusiliers, Royal Lincolnshire Regiment.

The writer of these lines suggests that the New Edinburgh Community Association approach the National Capital Commission with a view to having the CANLOAN Memorial flood-lighted as are the National War Memorial on Confederation Square and the British Commonwealth and Air Forces Memorial on Green Island.

Jan. Deadline Date

Deadline for the mid January issue is Friday, January 12. Please submit all material to 7 Avon Lane by 5:00 p.m. of the above date. All photographs and original artwork will be returned after publication.

The next meeting of the
New Edinburgh
Community Association
will be held on

Tues., Nov. 28
at 7:30 p.m.

in Crichton School

The following meeting
will be

Tues., Jan. 9
7:30 p.m.

If you wish any matter or issue to be included on the agenda, please phone Ray Boomgaardt at 746-0861 prior to the meeting.
All meetings are open to the community. Everyone is welcome to attend.



antiques, used furniture,
canadian and imported
collectables

613 - 745-1012

55 Beachwood
Ottawa, Ontario



House Sitting

Mature local residents will live in and care for your home while you are away. Have a good holiday knowing your plants and pets are well looked after. Give us a call.

745-5317

11 BEECHWOOD
749-5969

OTTAWA
ONTARIO

NETTOYEURS

Monson

CLEANERS LTD.
LTÉE

SPECIALISTS IN

SUEDE CLEANING

&

FRENCH CLEANING

Day Care Sets Up Nearly New Concept

In an effort to keep funds coming into the daycare on a regular basis, (in addition to fees) the New Edinburgh Day Nursery is establishing a nearly new monthly clothing sale.

Parents may bring all good used children's clothes to the daycare on the FIRST MONDAY of each month between 8 - 9:30 a.m. and 4 - 5:30 p.m. The clothes will be sold on the first Friday, between the same hours.

25% of the profits go towards the daycare.

Phone 745-8005 for more information.

Plenty of Piniatas, Pumpkins at Pot-Luck

by Katherine Haslett

Spending Saturday evening on a date with one's children is not the usual practice in today's society. However, another outstanding feature of living in New Edinburgh is just this type of activity.

Saturday, October 28th, was an important date in the lives of many parents, children and insiders of the Burgh. The occasion — a Halloween party and potluck supper at Crichton Street School. Parents ended up being escorts to their children as well as cooks who donated their favourite dishes. The fare was sumptuous for any party and refreshments of a medicinal nature kept us all in good cheer.

While witches, ghosts, space visitors and superwomen, wandered amongst us, we all enjoyed the treat of a live magician. An added bonus was the piniata a Mexican bird, constructed of papier mache, which after a few good swats with a large stick, divulged its contents of sweets in a free-for-all.



The soldier at left, Helen Hamilton-Harding looks up at the mysterious masked man Jonathan Ferguson, while sister Kate assumes a wistful fairylike expression.

People became acquainted and re-acquainted with neighbours and a great atmosphere of camaraderie was evident everywhere that evening.

As newcomers both to Ottawa and to the Burgh, we are thrilled that this type of fete occurs and especially on a

Saturday evening when most people are otherwise occupied.

The big event ended at eight-thirty and yet in spite of the early hour, I would venture to say that everyone left exhausted but happy and anxious for yet another Community Association gathering at Crichton Street School.

City Hall Exhibitions

2-9 — French Painter Joel Pascal/Peintre français

OMB Decision

(Cont'd from page 1)

in effect, a degree of "trade off" between communities, but the Regional Council considered the present proposal to be the less disruptive. The Vanier Parkway was originally intended as an arterial roadway to carry commercial traffic, but is now intended as a parkway facility which would preclude its use by such traffic. In this regard, the Ontario Municipal Board has been requested to modify the Official Plan by the addition of the Vanier Parkway to the list of parkways included within the final paragraph on pages 3-23 of the Plan. The Board will direct such an amendment".

And in summary it noted, "Generally speaking, the Board is in accord with the efforts of the Regional Municipality of Ottawa-Carleton to establish a road network that would best service the Region at present

2-9 — Juan Scott, ceramic sculptures/sculptures de céramique

2-9 — Meditative paintings-Sri Chinmoy/Peintures méditatives

11-17 — Society Dante Alighieri/Société Dante Alighieri

11-17 — Hungarian Heritage/Héritage hongrois

19-31 — Huguette Savard Painter of children's themes/Peintre de thèmes d'enfants

19-31 — Society George Enescu Société.

and for the future. It must be accepted, as it is accepted by the Board, that many of the proposed links are in place mainly to protect the rights-of-way for those proposed routes should they be needed in the future, and wisely so under proper planning procedures. Some of the proposed links may not be constructed for many years to come and then only if and when they are required by overall development within the Region. Other than has been stated in the evidence, the Board does not foresee the need to widen many of the roads or streets included within the network".

Reaction to the OMB report was rather mixed. Mayor Lorry Greenberg is reported to have said that he supported the Board's decision to limit growth in Ottawa-Carleton to the

western (Kanata) and the eastern (Orleans) satellite communities, and defer growth in the proposed southern community. The Mayor said he agreed with citizens groups who told the OMB that such growth would cause river pollution and misuse of good agricultural land. But the past chairman of the RMOC felt that this was just basic tinkering with priorities.

In contrast, Mayor Elect Marion Dewar said the City of Ottawa should appeal the OMB approval of the RMOC Plan to the Ontario cabinet because the Board's ruling ignored most of the major concerns of the City of Ottawa and citizens' groups.

And lawyer Tom McDougall, who represented the Federation of Citizens Associations at the OMB hearings, felt that the OMB's decision to defer growth in the proposed southern satellite community represented a massive victory for citizens pressure groups. He also noted that the decision of the OMB to delete precise locations for future roadways and parkways from the Plan, and change them to "conceptual links" which do not define the precise routes planned, was another victory for citizens' groups.

In Memory of 'Kitten'

Mrs. Hyde at 15 Crichton has just had her cat of 24 years die. A neighbour submitted the following tribute:

If there is a cat heaven, Kitten is there
As a guest in a land ever so fair
For twenty-four years she graced the earth
Her family certainly knew her worth
Kitten was valiant, strong and true
If cats were bronzed we'd do that too.

Those Were The Days . . .

You haven't lived in "the burgh" long enough if you can't remember:—

...electric "street" cars swaying up and down Crichton, John and Alexander Streets;

...the original National Film Board offices located on Sussex Drive, overlooking the Rideau Falls opposite the French Embassy;

...government "temporary buildings" on Green Island now the site of our City Hall.

...a restaurant where the office of Crichton Motors is now located.

...the lawn bowling surface on Maple Island. (Maple Island is the proper name for the small piece of land in the Rideau River at the Minto Bridges);

...a post office and restaurant at the corner of John and Sussex Streets (just north of the Heritage Office);

... "Pops Confectionery" at 48 Crichton Street (the Burgh's answer to Fonzie's Place);

...the Mica Mining factory opposite Crichton Street School, where the town houses now stand.

...wooden row housing on Stanley Avenue where the Church is now located.

...and these sites have only left the New Edinburgh scene within the past 25 years.

...by Lawrence Delaney (1978)



OTTAWA
RELIABLE
HOME
CONSTRUCTION
LTD.



746-5144

Five Year Guarantee
On All Workmanship

References in New Edinburgh

Compliments
of
C. H. McCreery
Butcher-Grocer

FREE DELIVERY

749-5951

GEORGE HOWITH

Real Estate & Insurance

337 Crichton Street

749-9971



ACCORDION LESSONS

Udo Szelgki teaches in two areas of the city, Vanier and Downtown.

Special rates for new students

Children (ages 7 and up)

Adults

Phone 523-5958

Part Time Housekeeper

Lady needed for light housework
four mornings a week

References essential

For information call 746-4443
between 6:30 and 10:00 p.m.

upstairs
downstairs

antiques

this, that and the other

29 Beechwood Avenue

741-3510

Please Keep For Future Reference

Community School Winter Programs for Children, Adults

Registration

Registration for January Programs —
Crichton Street School Library —
Wednesday, January 10, 7:30 - 8:30
Thursday, January 11 7:30 - 8:30

Courses begin week of January 15 and run for eight weeks 7:30 to 9:30 unless otherwise indicated by the instructor. Registration fee for most classes is \$15.00 with fee for senior citizens \$1.00.

Children's Programs

Highland Dance	Monday to Saturday
Jazz & Tap	Monday 3:30 - 4:30
Ballet	Monday 4:30 - 5:30
Creative Movement	Tuesday 4 - 5)Wed 4 - 5:45
Boys Wrestling (ages 8-12)	Thursday 4 - 5:45
Art	Friday 2:00 3:00
Gymnastics	Open
Music and Movement	
Piano Lessons	

BALLET
A combination class of classical ballet and acrobatics, Monday 4 to 5 p.m. covering both barre and floor work. At the end of the session students may take part in a demonstration or examinations of they wish.

MUSIC AND MOVEMENT
In this course children ages 4, 5 and 6 will be taught musical instruments, how to move to music, co-ordination of arms and legs. This class will be 45 minutes long with a maximum of 8 children in a class. Please call Kathy Robinson 741-5895 or Karl Parks 741-1904.

CREATIVE MOVEMENT
This class will be devoted to bringing forth the pure beauty in all creativity through movement. Pupils will move to music, poems, stories, paintings, etc. through dance and mime. As well some costume and set design will be incorporated into the class with a possible Spring performance to the community if the students wish to do so. This will truly prove to be a learning experience for those interested in expression of self.

Mature, responsible person to act as assistant liaison officer at Crichton School, evenings, Monday to Thursday, 7:15 to 9:15 beginning mid-January. Salary to be discussed. References. Please call Karl Parks 741-1904 or Sandra Ferguson 746-8259.



Mr. Keith's Catering Shops

DIAL A DINNER

A CANDLE LIT DINNER
WITH YOUR INTIMATE FRIENDS
PARTY SERVICE
WEDDINGS & BANQUETS
BUFFETS & SIT DOWN DINNERS

7 SPRINGFIELD RD.
(AT BEECHWOOD)

746-7071

Adult Daytime Programs

Highland Dance	Open
Euchre Club	Monday 1:30 - 3:30
Daytime Yoga	Tuesday 9:30 - 11:30
Ladies, Take A Break	Monday 9:30 - 11:30
Quilting	Wednesday 1:30 - 3:30
Slim 'N Trim	Thursday 2:00 — 3:00

LADIES, TAKE A BREAK
A new and exciting session for women in New(Edinburgh) designed as a learning and information program about subjects we are not always familiar with and providing a time for socializing, group discussions and making friends. Topics may include lifestyles in other lands, family life education, role of women, etc., featuring films, guest speakers, discussion groups, tours etc. The registration fee for this eight-week program to be held Wednesday mornings from 9:30 to 11:30 will be \$15. Baby-sitting(may-be provided. A minimum of ten persons will be required for us to undertake the above program. Be sure to register January 10 or 11, 7:30 to 8:30. For further information contact Karl Parks, 741-1904.

Adult Evening Programs

Slim 'n Trim	Monday 7:30 - 9:30
Dart League	Monday 7:30 - 9:30
Macramé	Tuesday 9:30 - 11:30
Table Tennis	Tuesday 7:30 - 9:30
Sewing	Tuesday 7:30 - 9:30
Tai Chi Chu'an	Wednesday 7:30 - 9:30
Basic Auto Mechanics	Wednesday 7:30 - 9:30
Bridge	Wednesday 7:30 - 9:30
Co-Ed Fitness	Wednesday 8:00 - 9:30
Slim 'N Trim	Thursday 7:30 - 9:30
Furniture Refinishing	Thursday 7:30 - 9:30
Modern Jazz Dance	Thursday 7:30 - 9:30
Piano Lessons	Open

DART LEAGUE
The dart league at Crichton School is growing! Why not come to room 10 at the school, Monday evening 7:30 to 9:30 and join in the fun. There is always room for a few more.

BASIC AUTO MECHANICS
This will be an elementary introduction to names of various parts of the car, where they are located and their purpose. This course is ideal for those wishing to become familiar with what's under the hood so you know what the local mechanic is talking about when next you need repairs. It may set you on your way to doing those little maintenance jobs yourself that can save you money. Wednesday evenings, 7:30 to 9:30.

For Information on any of the above Children's Programs, Adult Daytime or Adult Evening Courses call Karl Parks at 741-1904.

Dates to Note

JANUARY
Jan. 3 — School Starts
Jan. 8 — School Advis.
Jan. 9 — NECA Meets
— Comm. Council

FEBRUARY
Feb. 5 — School Advis.
Feb. 6 — Annual Gen. Meeting
Feb. 13 — Commun. Council
Feb. 21 — P.D. Day
(No school)
Feb. 24 — Monte Carlo Night

MARCH
March 5 — School Advis.
— P.D. Day — No school
March 5 - 9 all programs end
March 13 — Comm. Council

March 19-24 — School Break

If there is a programme you wish to see made available at the school please contact Karl Parks at 741-1907 or Sandra Ferguson at 746-8529.

MEL DAVID TV & RADIO SERVICE

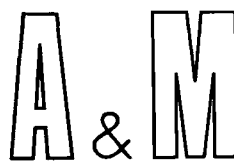
AUTHORIZED DELCO SERVICE DEPOT

COLOUR, BLACK & WHITE TV - RADIOS

ALL HOME ENTERTAINMENT
EQUIPMENT REPAIRED

45 BEECHWOOD
(COR SPRINGFIELD RD)

746-7229



USED FURNITURE

WE BUY AND SELL
QUALITY USED FURNITURE

12 BEECHWOOD AVE.,

VANIER, ONTARIO

Le Parc a l'Ecole Barrette Sera Complet Bientot

Au retour des classes en septembre la communauté de l'école Barrette-St Charles a fait connaissance de son nouveau directeur M. Philippe Du Perron (ancien directeur de l'école de Mazenod). Nous lui souhaitons la bienvenue dans notre milieu.

Enfin, l'aménagement du parc dans la cours de l'école a vu ses débuts le 6 novembre dernier. On nous informe que la durée de la construction sera au moins cinq semaines. Ce parc est le résultat d'un travail d'équipe de plusieurs personnes de notre communauté en concert avec la direction de l'école, un planificateur de la ville d'Ottawa et le conseil scolaire qui ont travaillé ensemble durant deux années à planifier un espace récréatif qui desservira toute la communauté environnante.

Vos enfants profiteront de nouveau cette année à des

activités et des sorties soit culturelles, éducatives et religieuses. Voici la liste partielle des activités qui se déroulent à l'école jusqu'en décembre.

Activités culturelles:

Pièce de théâtre présenté par "La Corvée"

Chansonnier — Suzanne Pinel
Visite du Colonel Ostiguy
Cérémonie du Jour du Souvenir

Sorties éducatives:

Village de sécurité
Marché By
Forest Larose
Tour d'horizon de la ville
Maison Mackenzie King

Activités religieuses:

Messe de l'Action de grâces
Préparation à la fête de Noël
Cérémonie à l'occasion du dimanche des missions Remise des évangiles aux élèves de 4e année

Nos élèves de 6e année recevront le sacrement de



confirmation par Mgr Plourde le 18 novembre à l'église St-Charles et à l'église St Vincent de Paul.

Nous sommes à préparer la fête de la Sainte Catherine. Nous aimerons avoir des volontaires pour venir faire de la tire à l'école. La personne qui viendrait pourrait expliquer, si elle le veut, sa recette personnelle. Les différentes cuissons pourraient s'échelonnner sur une semaine (semaine du 20 novembre) à l'heure convenant le plus à la personne qui viendrait.

Veuillez nous faire connaître votre disponibilité par téléphone, au numéro 749-6169.

Crichton Students Fit

The fall of 1978 has been designated the time for implementation of the Ottawa Board of Education Physical Education Guidelines. For this and other reasons, we are putting a special emphasis on physical fitness here at Crichton Street Public School.

Every morning the students and staff get together for 5 minutes of exercise in the Auditorium. Fitness is also emphasized in the Phys Ed classes.

Once a week this fall, all

classes held their physical education class together and went jogging at the Governor General's grounds. The children and staff ran 1/2 km laps and each lap was recorded. A grand total of km run is being kept throughout the year.

To check our work, each student was given a fitness test in October. A second test will be given in February and a final test in June. Our hope is that each student will show a marked improvement in his/her fitness level.

Paper Plans Informal Session

On the last Tuesday of every month anyone interested in doing anything for the New Edinburgh News is welcome to drop in to the Community Desk at Crichton School.

The point of these informal get-togethers is to work out the sort of things you'd like to see in your paper.

Don't be shy. You might like to be assigned to a story, or help someone who is, or take photos, contribute humour or raise

some matter of concern that you'd like to see the paper investigate.

Maybe you'd just like to meet a few people. Anyone is welcome from 7:30 pm on the last Tuesday of every month.

The first such get-together will be Tuesday, November 28.

See you there.

PS That includes those who complain but never do anything.

Projet Phare a Beaucoup de Participation

Le conseil communautaire a repris des activités pour une autre année. La participation aux différents ateliers regroupait quelque soixante adultes pour les cours de couture, crochet, tricot, macramé et yoga.

Une entente fut conclue avec le département de Parcs et Récréation de la ville d'Ottawa, ce qui nous permet d'embaucher une personne 5 jours par semaine pour un programme "après 4".

En plus de ces ateliers pour nos jeunes, nous offrons un cours de majorettes les samedis matins de 10h:00 à midi. Il est encore possible de s'inscrire au cours de majorettes en se rendant à l'école St-Charles, le samedi matin.

Le lundi 6 novembre avait lieu l'élection du conseil communautaire pour l'année 1978-79. Les membres de ce comité sont en groupe de vos voisins(es) qui s'intéressent à la vie quotidienne de leur quartier et le développement social, culturel et récréatif, tout en essayant de répondre aux besoins et aux attentes des gens francophones de la communauté. Voici les membres du nouvel exécutif: Présidente: Mme Irène Marion; Secrétaire: Mme Françoise Drouin; Trésorière: Mme Rhéa Wendt; Conseillères: Mme Yollande Surprenant, Mme Diane Proulx, Mme Aline St-Denis, Mme Pierrette Charlebois, Mme Gervaise Labadie, Mme Myriane Gagnon, Mlle J. Mantha.

Ce comité se rencontre tous les mois pour organiser l'ensemble u programme de l'école communautaire. Les réunions sont ouvertes à tous les gens de la communauté. Sentez-vous libres d'y assister. Nous avons besoin de votre support et de vos suggestions.

L'école communautaire est toujours à renouveler sa recherche pour des personnes intéressées à donner des cours. Si vous avez des compétences (e.g. couture, macramé, français langue seconde, bricolage etc. . . . etc. . . . etc.



Un projet du programme "Après 4" à l'école St-Charles, la fabrication d'une moquette de leur quartier.

... dans un sujet ou une discipline quelconque, téléphonez-nous pour en discuter.

Mme Roselyn Beaudoin,

l'agent de liaison, peut être rejointe tous les matins du lundi au vendredi à 749-0062, et l'après midi, à 746-0976.

Operation — Un million!

A l'ère des loteries provinciales et nationales, les millions coulent à flots! Cependant, combien d'enfants, voire d'adultes, ont une notion exacte du nombre un million? Peu . . . tres peu! Les pédagogues mêmes perdent en conjectures quant il s'agit, par exemple, de transmettre le concept mathématique d'un million.

Or l'école Barrette tentera d'y apporter une solution palpable, visible, tangible . . . en recueillant un million d'articles pour en faire une "petite" trousse mathématique! M. Du Perron, le nouveau directeur de l'institution, aimerait continuer un projet qu'il avait entrepris il y a déjà un certain temps: recueillir un million d'attache-pain.

Le projet se veut relativement réaliste! Supposant qu'un habitant de la ville d'Ottawa mange en moyenne un pain par semaine, et que l'attache-pain dont il dispose soit retourné à l'école Barrette, il ne faudrait

pas plus d'un mois pour atteindre l'objectif . . . Supposant encore qu'un millième de la population d'Ottawa soit au courant du projet et qu'un dixième pense à collectionner les attache-pain pour ledit projet, il ne faudrait que . . . X semaines pour devenir "millionnaires"! Tentons notre chance!

A présent, environ un quart de l'objectif est atteint. De fait, l'école a près de 250,000 petits morceaux en matière plastique, de tous les formats imaginables. Il doit certainement y avoir encore des gens qui mangent des sandwiches, qui dégustent du pain rôti au petit déjeuner? Ces gens-là peuvent faire d'un petit rêve une réalité "physique".

Ceux qui feront le petit effort de cueillette en guise d'approbation à cette "juste cause" pourront apporter leurs attache-pain aux écoles Barrette (50 Vaughan) ou St-Charles (24 Springfield) ou appeler au numéro 749-6169: Quelqu'un se chargera d'aller les chercher.

Come to a Paint-In

The Community School Council intends to brighten up the basement lunchroom area of the school with an exciting selection of colours as proposed by Sylvia, our artistic con-

sultant. Volunteers are needed to do the painting and if you are willing to give of your time some Saturday or evening please call Sandra Ferguson at 746-8259.



We are concerned with the conservation of New Edinburgh as a part of Canada's living heritage, a visible reminder of the Capital's past for the enjoyment of present and future generations.

SAMPSON & McNAUGHTON LTD.

REAL ESTATE BROKERS

Suite 402 Inn of the Provinces K1R 7S8

237-2607

Soccer Team Kicks Off



Soccer Team — Ben Shepherd, with team mascot; Lara Wolfson, Dominic Bradford, Daniel, ('The Fly') Wolfson, Gyde Shepherd, Thomas Shepherd, Jenny Ferguson, Patrick Visentein, Rachael Klein, Angus Henry, Jay Valiquette, Jonathan Ferguson, Alex ('The Red Baron') Wood, Ron Wolfson, Jack Ferguson, John Wood; absent from soccer photo — Mike Haslett, Andrew Burke, Veronica Visentein.

New Edinburgh now boasts a fledgling soccer team made up of area youngsters, who have headed over to Stanley Avenue park regularly every Saturday morning this fall for a few hours' fun and exercise. The team, varying in ages from 5 to 13, was formed by Jack Ferguson in an effort to get the kids in the community out for regular physical activity on the weekends. In August and September Jack sought out other children through New Edinburgh News who would join his own two, Jennifer and Jonathan, and the response was slow at first, but sufficient to align the players into two teams — the red shirts and the yellow.

The emphasis was on fun and instruction was on the field; most of the participants had never played before. Jack and fellow coach Ron Wolfson and referee John Wood felt that the

players would benefit more from learning as they played rather than taking in a lot of rules without application. Over the weeks more children joined the Saturday morning soccer session in the park and are now quite enthusiastic about resuming in the spring.

Watch for announcements in the spring about the first game and be sure to encourage your children to come out and play. The stress is on having fun, not on skill. Jack told us that one parent who was approached said she doubted that her 7 yr old would be interested because he wasn't really very athletic or competitive; he not only turned up for every game but was one of the team's better, more enthusiastic members throughout. Thanks to Mr. Jones for the loan of Crichton School's ball and red and yellow team bibs.

Bridges Open

by Gaye Applebaum

I recently had a visitor from the wilds of Bells Corners who remarked on finally arriving for a dinner party — considerably later than is his wont — that it was becoming increasingly difficult to actually get to New Edinburgh. Oh, you could see it all right from the other side of the river but trying to second guess which bridge was open and which was closed, which was reduced to one lane and so crowded that it meant interminable waits, meant constant back-tracking and circling in and around centertown getting increasingly frustrated. But never fear oh ye patient residents of the Burgh. With the delivery of this edition of New Edinburgh News access to the remote tucked-away community of New Edinburgh from points west is no longer restricted to those inventive people who have found that they can circumvent the problem by approaching from Beacon Hill. Our bridges are open! (she writes in full confidence having been assured of same at the time we went to press)

The Minto Bridges are fully reconstructed and all four spans are scheduled to open for traffic and pedestrians before the end of November. Project Superintendent Neault stated that there is still a lot of grill work to be done, sidewalks to be finished but that they see no reason why the bridges cannot be open. He said that the reconstruction went well and that they are only slightly behind the anticipated schedule for completion as a result of the theft of materials two weeks ago (the only incident in the 3 month job) which now have to be shipped from Ohio for replacement. Two of the spans are painted (the one at City Hall and at King Edward) cream, or off-white (I would have preferred a garish Chinese red myself being somewhat partial to Chinese red, if anyone had asked. . .) but the remaining two spans will have to wait until the spring because it is too cold for completion now.

The 4-lane St Patrick Bridge is now finally operational with all four lanes open to traffic. However a spokesman at the site said that all pedestrians will still have to use the older westbound section until the problems with the handrail can be sorted out. The handrail is manufactured and ready for installation but there is a minor problem in that it is in receivership, along with all the other assorted goodies that were the property of the bridge's previous now-bankrupt contractor. Aren't construction stories always the same. . .

However, one must not complain. The horrendous bottleneck at Beechwood and Crichton over the past year and a half should be down to a trickle. Public servants and civic employees can resume their leisurely stroll over the Mintos and shed their harried grimaces as they no longer have to detour along Stanley to Sussex, the snowshoers and cross country skiers will be able to glide across the newly surfaced roadway, and all of us will be able to

enjoy those wonderful walks over the bridges without worrying that the steel supports may at any moment give way or that the bridge might swallow the odd child or dog in those vast gaping holes we became so adept at avoiding.

With the structural work completed on both St Patrick

Street and Minto Bridges maybe the Region will even feel that it is time to remove the fill and give us a flowing river once more. Perhaps the Region even be moved to clean up the sore sight that greets residents and visitors alike at the Beechwood approach to New Edinburgh.

FERN'S BEECHWOOD SHELL

20 Beechwood Avenue
Next to I.G.A./A Cote du I.G.A.

**BOOSTING
SURVOLTAGE
Engine Shampooing**

OPEN: 7 Days a week OUVERT: 7 Jours par semaine

HRS: 7 a.m. - 10 p.m. Mon. - Fri. Lun. - Ven.
HRES: 8 a.m. - 10 p.m. Sat. Sam.
9 a.m. - 10 p.m. Sun. Dim.

FERN MILLIARD

C'mon in and meet/Venez rencontrer FERN

Gold Bond Stamps with gas/
Timbres Gold Bond avec achat de gazoline

General Repairs — Specializing in foreign car repairs
Reparation generale — Specialiste en reparation de
voiture etrangeres



749-4822

**TOWING
REMORQUAGE
Plowing**

Christmas Baking Needs...



DOMUS

41 York St... 235-4586...

UNDER NEW MANAGEMENT SIMONE'S CONFECTIONERY



**143 Crichton Street
Ottawa, Ontario
749-5070**

OPEN SEVEN DAYS A WEEK
Monday - Saturday — 9:00 a.m. to 10:00 p.m.
Sunday — 11:00 a.m. to 8:00 p.m.

Wider Choice of Food
A Good Selection of Books and Cartoons
Records Hot Snacks Magazines

The Garage Sale Was ...

a lure to more than 2000 bargain hunters from every corner of the city drawn to New Edinburgh by the hopes of a rare find...

a warm beautifully sunny day perfect for leisurely browsing, strolling and careful scrutiny...

a veritable beehive of activity from 8:30 am on through until the last spoils went for grabs at an early 2:30 pm.

the sight of the lone Browells setting up shop on Mackay when most others were packing up...and still managing to sell the lot.

the size 14 and one-half ski boots of Stuart Haslett

the vegetable produce of Hamilton-Harding's garden.

the scorn of Bob Applebaum for 'this mad consumerism' only minutes before he came upon the world's most perfect (and most needed obviously) electric drill.

all the glittery baubles and trinkets a 7 year old girl could desire for 50 cents.

the sweater one of Bill Jones' helpers at the school sale put down on the counter for a minute to go into the school for a drink of water — only to come back and find it had been sold.

the beautiful long sought oval old picture frame I passed 3 times on Mackay and finally decided to go after it ... but too late.

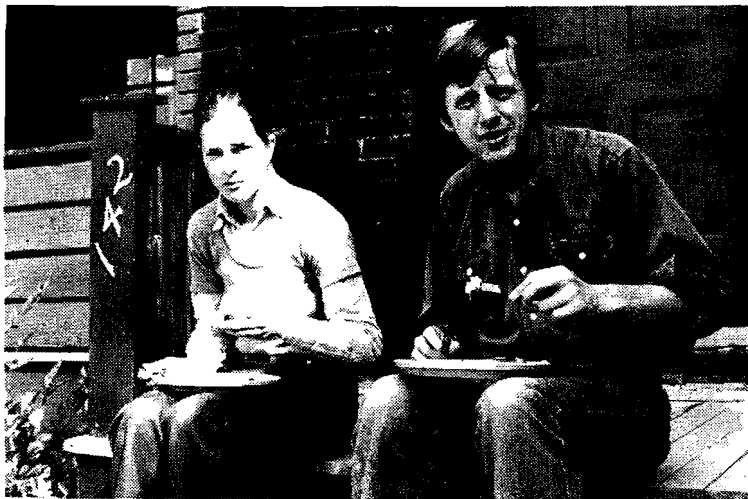
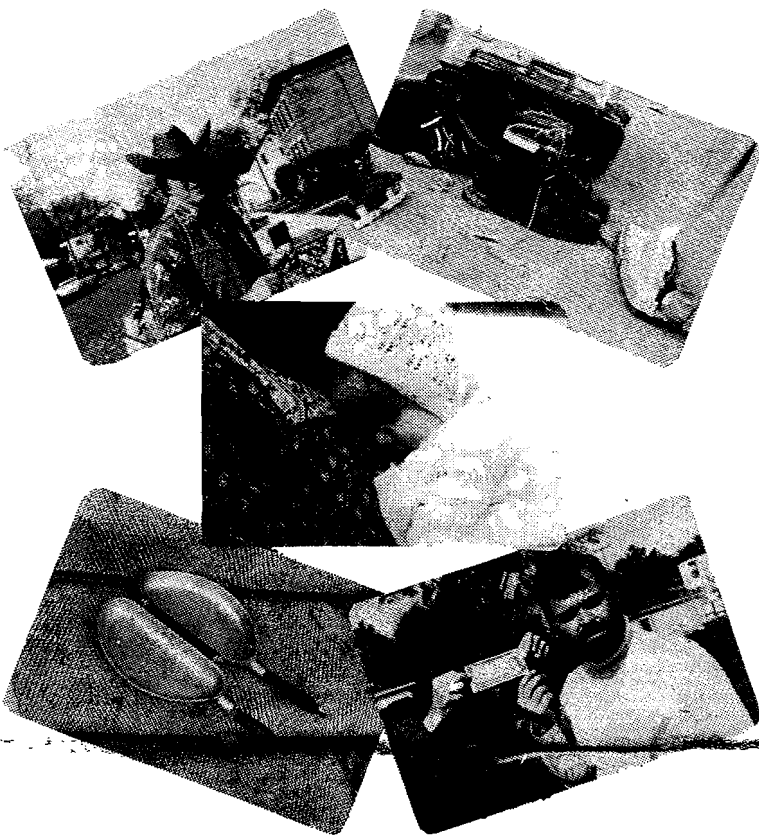
the professional coin and old medals collector inquiring of all if there were any, by chance, perhaps, maybe...

—the high spirits and joviality as sellers became buyers became sellers and neighbours pondered others' throwaways...

the more than 50 sales (some combined/one raised more than \$1000) — not bad for a day's work!

a tantalizing taste of next year's crowd drawing event.

and...a grand tally of \$875 for our daycare.



What's Cooking ...

by Marjorie Hamilton-Harding

HOT HARDY STEW

Let's keep those winter chills away with some good eating. This stew should do just that. Serve it with hot, crunchy bread and butter.

2 or 3 lbs stewing steak
2 oz butter
2 large carrots peeled and cut in rings.
1 bunch fresh herbs (parsley, bay leaf, thyme) or dried herbs to taste.
2 cups water or stock made from bouillon cubes
1 glass burgandy (optional)
one-half lb beef kidneys
2 medium sliced onions peeled, cut in slices
2 tablespoons flour
Salt and pepper to taste.

Cut the meat into slices, season with salt and pepper. Dip in flour and brown lightly in some of the butter in a large pan. Cut the kidney in slices, having removed the white parts and fry lightly. Place beef and kidney in large pan with largest of the vegetables and herbs. Add hot stock and burgandy. Liquid should cover the meat so add a little water as necessary. Bring to the boil then cover and cook slowly for 2 one-half to 3 hours. 20 minutes before serving add some potatoes to the stew. Freeze whatever is left over after eating. NB Meat shrivels when cooked and juices come out of it. If the stew is too liquid remove lid for last 20-30 minutes of cooking, so that some of the liquid evaporates.

Ode to Eleanor

by Ruth Crinion

What is New Edinburgh coming to?
It looks like its getting the mumps.
With stucco, aluminum siding,
And things on the roofs like big bumps.
If people want sterile white houses with no character inside or out,
Why don't they go out of the suburbs.
There's plenty like that round about.
Our ancestors built us a heritage of strong houses built to last,
But the facades and verandas are changing and disappearing too fast.

We want the peace and calm of a village.
With workers rich and poor.
With trees, the gardens and river
Our own little village store
So think twice who you sell your old house to.
Do they love it as you and yours did
Or can't they wait to get out the old hammer,
And sell to the highest bid.
Eleanor, dear Eleanor thank God you won't see.
Your little grey house in the burgh,
With its humps and its lumps and silly glass bumps.
What's left in the burgh, R.I.P.

Our thanks to new contributors: Katharine Haslett, Lawrence Delaney and Edward Kekanovich. Thanks also to Mary Beth Grant who helped with layout.

St. Bartholomew's Church
125 Mackay St.
TEA AND BAZAAR
Sat., Dec. 2, 2-5 p.m.
Everyone Welcome

JOHN'S GROCETERIA

(Formerly Hutt's)

Packaged Meats

Open 7 Days a Week
7:30 a.m. - 11:00 p.m.

292 Mackay

FREE DELIVERY

SLUSH
ST. PUPPIE
Tel. 749-9241

CALICO HANDI CRAFTS

494½ Somerset W. (near Lyon)
235-3746

Quilts,
Calico Fabrics

Tues.-Sat.
10 - 5 p.m.

Can You Help?

Crichton Street School needs your help. A volunteer program is being started to help various areas throughout the school. The program is designed to assist teachers in many different areas.

For example: remedial reading, art projects and classroom aid. No special training is necessary, just a willingness to help.

Can you donate half an hour of your time a week, or half an hour a month? All the children will benefit. Contact Mary Beth Grant at 745-2797 or Peggy Morgan at 745-3270.

ECOLES MONTESSORI SCHOOLS
PLACES LE MATIN MAINTENANT OU
APRES NOEL
NOUVEAUX ENFANTS FRANCOPHONES

62 MAPLE

745-5831

Polish - Italian Food

1 Beechwood Avenue 746-4970

HOURS:
Mon. - Sat.
8 a.m. - 11 p.m.
Sunday
12 noon - 10 p.m.

HOUSE SPECIALTIES
Stuffed Mushrooms
Veal Cutlets — Polish Style
Polish Ravioli
Veal Scallops with Tomato Sauce
Cabbage Rolls

Miss Katharine Robinson

will be holding registration for her Highland Dancing classes — Studio, Crichton School — early in January. Ages 6 and up. Beg. - Advanced students. Phone 741-5895.

She will also be teaching a music and movement class to 4 and 5 year olds. Any one interested contact Karl Parks 741-1904.

Anyone interested in adult Highland lessons, I would be very interested in hearing from you.

A Jogger's Diary

by Chris Burke

Remembrance Day 1978

Do some stretching exercises. Head rolls, squats. Bend the knees 'til you hear them crack. Do a perimeter run around New Edinburgh. Near freezing, so a full sweat suit.

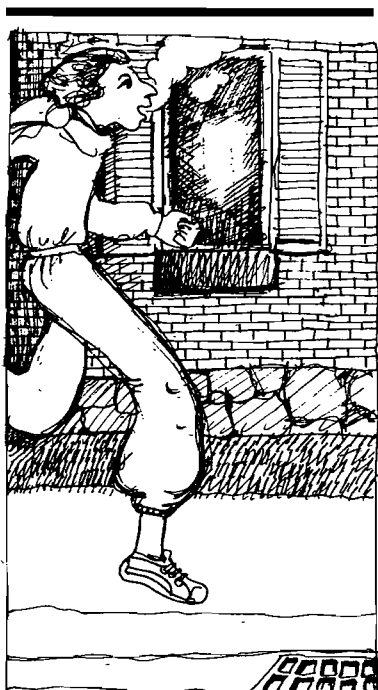
6:03 pm: Head off from 64 Dufferin, up the hill. . . Knees feel tight. Try to get into a nice easy stride, no hurry tonight. Settle down into an easy pace, about 7 minutes a mile, maybe 7 1/2. . . Running past my election houses. Must remember to drop off the second round of campaign literature and get them all out to vote for Bruce on Monday. . . Top of the hill. Where is the perimeter? Rideau Terrace or Maple Lane? Better safe than sorry, left onto Lisgar.

6:05 pm: Turning right into Maple Lane. Bricks outside number two, wonder what they are going to build. . . This is the edge of Rockcliffe, a lovely place to run, especially at night. There is a great pleasure in looking into the windows of the rich — a less intrusive form of the dirty kids with their faces pressed to the windows, or the people watching the dance in *Madame Bovary*. Jogging is a licence for being respectably inquisitive. Not quite voyeurism. From street level you are always looking up, and the only nudes you see are on canvas — and wall-bound.

6:07 pm: Just turned into Springfield. . . The climb is over and no shortage of breath. Relax a bit now on the flat. The knees don't hurt. As Quiller would say "the organism is functioning just fine." . . . Cross Rideau Terrace and nice and easy down the hill to Ecole St Charles.

6:10 pm: Entering New Edinburgh's commercial section. Rockcliffe Pizza (I wonder how many embassies use that when they don't have guests). . . Turn the corner. . . Hart's. . . Jolicoeur. . . The Olde Towne. . . Polonez (Chateau Bar-B-Q to the unobservant). Two fine institutions that I should get to more often.

6:12 pm: Onto Crichton and across to the River side. This is the mixed bit of the Burgh, where the renovation is still mingled with the other section. More Robert signs here. Fascinating to watch the leading edge of renovation heading upstream, almost into the 300's.



Drawn by Heather Matthews

. . . About a mile and a half gone and feeling very easy — a light sweat, but that's inevitable when I wear a full sweat suit. . . The tide of white painting has slowed down a bit with high interest rates and the flattening off of prices. Not many 'Sold' signs lately. I sometimes think there are four people running for Alderman: Robert, Bruce Grant, Sampson, and McNaughton. . . Hey, the Doctor's house with the leaded windows has gone. First sale in a while. Never did get to see the inside.

6:14 pm: Left onto Dufferin and swing right into Stanley. . . Past the playground — is it still used or do the kids use the fancy one at the school? May become an academic point if the Arterial ever goes through. Classic problem that. The only way the neighbourhood can win is if the city stops growing and people

stop driving around in cars. A neighbourhood problem with a world-scale solution. . . This first stretch is pretty dark, rape country, maybe the Arterial would reduce that problem. . . Stretch out the stride a bit now for this is great running. . . Past the Municipal Archives, another fun place to visit. Can anybody just wander in? . . . On, a little faster now, past that lovely white farmhouse — lovely from the outside but it must be tough to maintain and heat and so on. . . Across Union. Veer left to run across the grass and onto the path by the River — that's the perimeter.

6:19 pm: Sussex Drive, turn right. There's a number 5 bus in front of the Museum. Nice to have such good bus service. OC Transpo don't seem to mind having them empty most of the day. The Museum is another unvisited — put it on the list. . . Look across to the French Embassy, giant building. Why do they need so much space? The July 14 reception is held outdoors. Can you imagine asking Treasury Board for 10,000 square feet of reception space in case it rains on Canada Day? Maybe we should check out what Canadian embassies look like.

6:20 pm: Next stop the Prime Minister's house, very modest, except for the pool, and Treasury Board had no say in that. Odd though that the South African Embassy is opposite Number 24, the prime position. I wonder if External have ever thought of asking them to move. Nice spot for an American Embassy! Nice country where the South African Embassy needs no guard. . . Turn onto Rideau Gate, past the guest House, following the GG's fence.

6:21 pm: Left onto Mackay. . . Run on the grass, even in the dark. It's easier on the feet, and once the snow flies we'll be forced back on to the pavement. . . Mackay is the most elegant street in the village really, certainly the "brickiest". As always, scarcity denotes status. In the land of hewers of wood, the rich live in brick houses, looking as English as possible. . . There's real history on Mackay though. . . There's the house Michael Pitfield got the grant for. . . The IODE headquarters. . . St Bartholomew's, the last bastion of the Church of England in Canada, monarchist to the core. . . Mind the potholes behind the cricket pavilion. It's so rough the pavement would be safer, except there are even more potholes there. . . Past the brick rows. . . Past the cottage that Fitzsimmons sold. . . Past the grey rows. . . Step into the road and stride out for home. Almost there now. . . The brick hall with the false front. How many false fronts are there in Ottawa? (Not counting those on people). . . Mackay Church, the wedding chapel — rarely see a

funeral there though — maybe the United Church uses the chapels at the funeral homes. . . Turn into Dufferin and back to number 64.

6:25 pm: 22 minutes. Must be about three miles. A few stretches, a walk around the block, then in for a nice bath. . . Meant to ponder the meaning of Remembrance Day, but didn't. Maybe New Edinburgh is part of what so many died for. Hope we never have to risk death for it. Probably worth it, though. . . Clothes off, pick up a book, and into the tub. . . Aaah.

Classified

TYPING SERVICES
If you need typing done, my Selectric IBM typewriter and I can do a good job. Reasonable rates. Familiar with theses etc. 745-0768.

WANTED
Local woman to occasionally babysit my daughters aged 1 and 3, weekdays, my home. Good pay. 745-4512.

NEEDED
Garage or parking space with plug-in. Urgent. 741-5591.

Give Blood Boxing Day

The Red Cross must collect 1,500 units of blood during the Christmas season for patients in hospitals in our area.

The celebrated annual BOXING DAY CLINIC is being held at the RA Centre, 2451 Riverside Drive, from 10:00 a.m. to 4:00 p.m. on Tuesday, December 26, complete with entertainment, refreshments and baby sitting.

Red Cross House will be a festive holiday house during the season, with Christmas cake and punch for donors, carols, decorations and a baby sitting service.

Red Cross House will be open as follows:

Thursday, December 21 — all day — 9:00 - 5:00, 6:30 - 8:30.

Friday, December 22 — 1/2 day — 9:00 - 12:00.

Boxing Day Clinic, RA Centre, 2451 Riverside Drive — December 26 — 10:00 - 4:00.

Thursday, December 28 — all day — 9:00 - 5:00, 6:30 - 8:30.

Friday, December 29 — 1/2 day, 9:00 - 12:00.

Piano lessons, for beginners, ages 7 and up. Reasonable rates. Private or semi private. 741-5895.

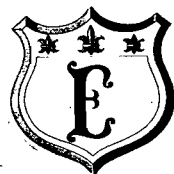
Christmas Savings SPECTACULAR

Win A Giant Size PLUSH BEAR
A WINNER IN EVERY GUARDIAN DRUG STORE!



Christmas Gift Treasures!

G HART'S PHARMACY
33 BEECHWOOD AVE.



Hotel Eastview

200 MONTREAL ROAD, EASTVIEW
OTTAWA 2, ONTARIO

New Lounge

"THE BLARNEY STONE"

Entertainment Nightly
50 AIR CONDITIONED ROOMS
DINING ROOM OPEN for
LUNCH, BUFFET and EVENING DINNER

4 Banquet Halls for
Wedding Receptions, Private Parties

746-8115